

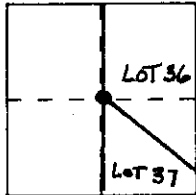
# CORNER RECORD

5S 31-30-6

Document Number \_\_\_\_\_

City of \_\_\_\_\_ County of MONO, California

Brief Legal Description SOUTH WESTERLY CORNER OF LOT 36, TRACT No. 37-17



## CORNER TYPE

Government Corner ☐ Control ☐  
 Meander ☐ Property ☒  
 Rancho ☐ Other ☐  
 Date of Survey 6-6-02

## Coordinates (Optional)

N. \_\_\_\_\_  
 E. \_\_\_\_\_  
 Zone \_\_\_\_\_ NAD: '27 '83 \_\_\_\_\_  
 NAD-83 Epoch \_\_\_\_\_  
 Elevation \_\_\_\_\_

Corner — Left as found ☐ Found and tagged ☐ Established ☐ Reestablished ☒ Rebuilt ☐

Identification and type of corner found: Evidence used to identify or procedure used to establish or reestablish the corner:

FOUND TWO MONUMENTS ON W'LY LINE OF TRACT IN GOOD  
CONDITION AS SHOWN ON BACK.

SET MONUMENT ON W'LY LINE AT PROPORTIONED DISTANCE  
BETWEEN TWO FOUND MONUMENTS.

A description of the physical condition of the monument as found and as set or reset: \_\_\_\_\_

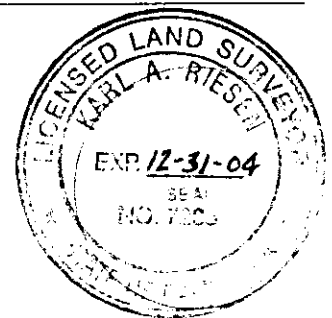
FOUND MONUMENTS IN GOOD CONDITION.

SET A 2"x 24" IRON PIPE, UP 0.3', WITH TAG "LS 7285" IN  
SMALL RING OF ROCKS.

## SURVEYOR'S STATEMENT

This Corner Record was prepared by me or under my direction in conformance with  
 the Land Surveyors' Act on JUNE 7 ~~19~~ 2002

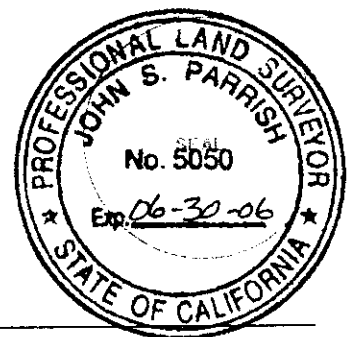
Signed Karl A. Riesen (L.S.) or R.C.E. Number 7285



## COUNTY SURVEYOR'S STATEMENT

This Corner Record was received 04-14 <sup>2005</sup> ~~19~~ and examined  
 and filed 07-18 <sup>2005</sup> ~~19~~

Signed John S. Parrish Title Mon County Surv.



County Surveyor's Comment \_\_\_\_\_