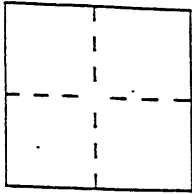


CORNER RECORD

Document Number CR-620City of OAKLANDCounty of ALAMEDA, CaliforniaBrief Legal Description Per Lots 7 & 8, Gwin Unit of the Highlands of Oakland, S M 39

CORNER TYPE

Government Corner ☐ Control ☐
 Meander ☐ Property ☒
 Rancho ☐ Other ☐
 Date of Survey 11-1-91

COORDINATES
(Optional)

N. _____
 E. _____
 Zone _____ Datum _____
 Elev. _____

Corner — Left as found ☐ Found and tagged ☐ Established ☒ Reestablished ☐ Rebuilt ☐

Identification and type of corner found: Evidence used to identify or procedure used to establish or reestablish the corner:

Found points as shown on reverse.

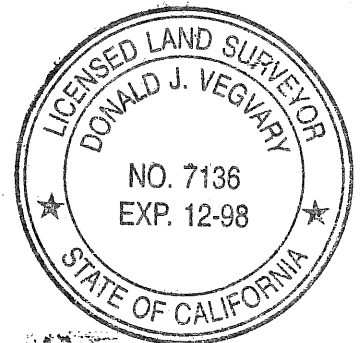
A description of the physical condition of the monument as found and as set or reset:

Set points as shown on reverse.

SURVEYOR'S STATEMENT

This Corner Record was prepared by me or under my direction in conformance with the Land Surveyors' Act on 6-16 1995.

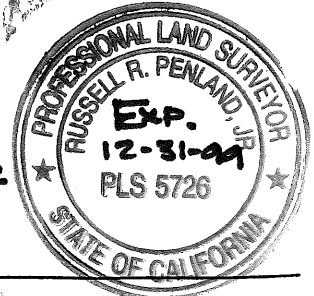
Signed [Signature] L.S. or R.C.E. Number L.S. 7136



COUNTY SURVEYOR'S STATEMENT

This Corner Record was received JULY 2 1996 and examined

and filed D-201 1997 DEPUTY
 Signed Russell R. Penland, Jr. Title COUNTY SURVEYOR

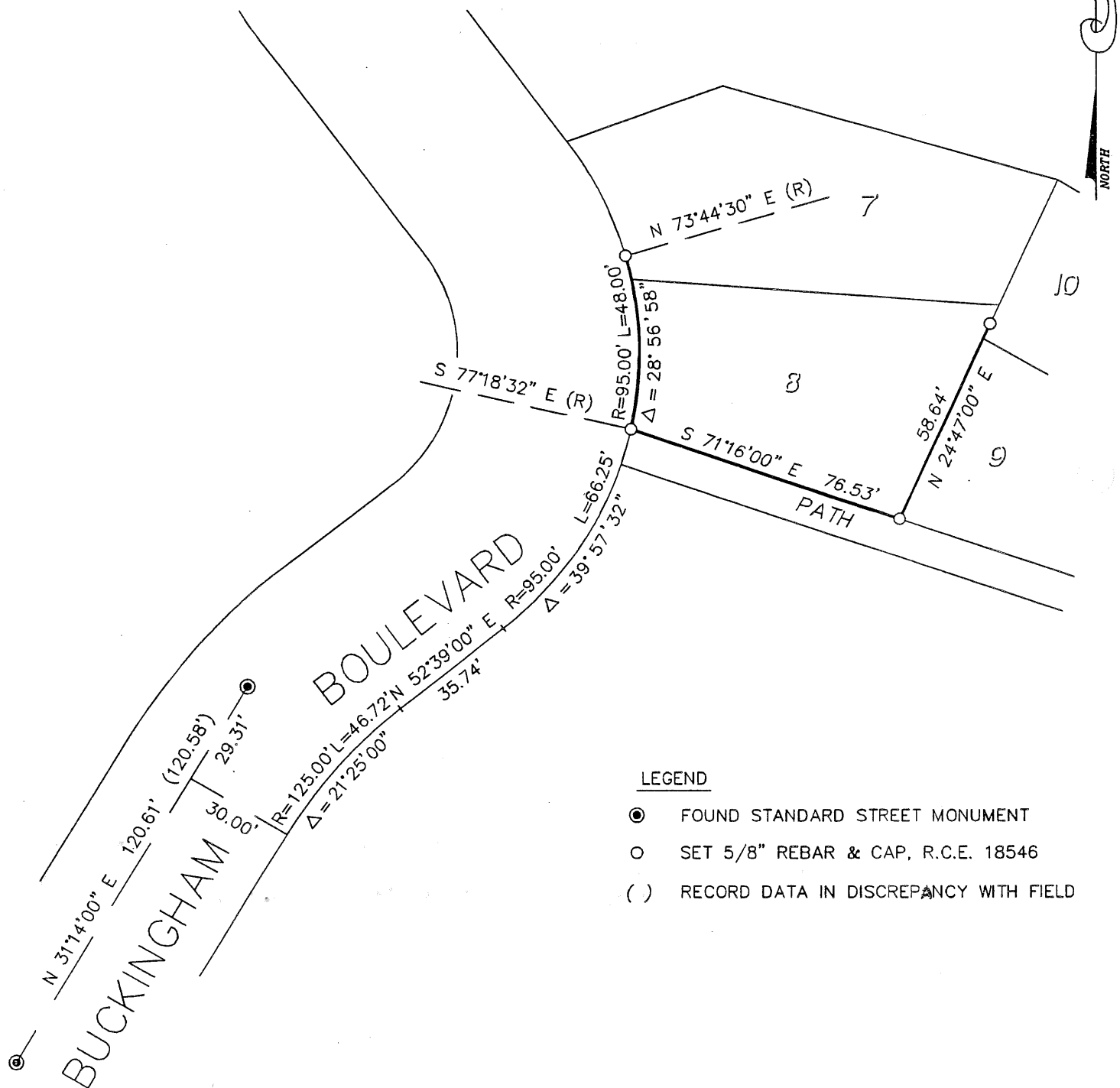


County Surveyor's Comment _____

CORNER RECORD

PORTIONS OF LOTS 7 & 8
GWIN UNIT OF THE HIGHLANDS OF OAKLAND
5 M 39

SCALE: 1"=40'



IVAN VEGVARY & ASSOCIATES
CIVIL ENGINEER - LAND SURVEYOR
40 TERRA TERESA
LAFAYETTE, CA 94549
(510) 947-1051