

RECORD OF SURVEY NO. 34-26

A LOT LINE ADJUSTMENT OF LOT 12, BLK C, MB 1/4, AND PARCEL 1, PMB 1/97, LOCATED IN A PORTION OF THE SW 1/4, SEC 9, T1N, R26E, MDB&M, MONO COUNTY, CALIFORNIA.

SURVEYOR'S CERTIFICATE

THIS MAP CORRECTLY REPRESENTS A SURVEY MADE BY ME OR UNDER MY DIRECTION IN CONFORMANCE WITH THE REQUIREMENTS OF THE LAND SURVEYOR'S ACT AT THE REQUEST OF DON BANTA IN APRIL, 1987.

COUNTY SURVEYOR'S CERTIFICATE

THIS MAP HAS BEEN EXAMINED IN ACCORDANCE WITH SECTION 8766 OF THE LAND SURVEYOR'S ACT THIS 18 DAY OF MARCH 1988.

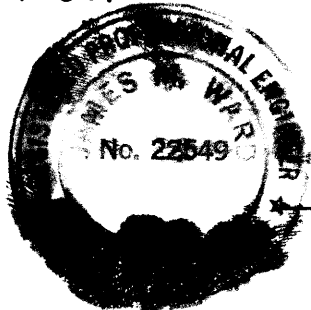
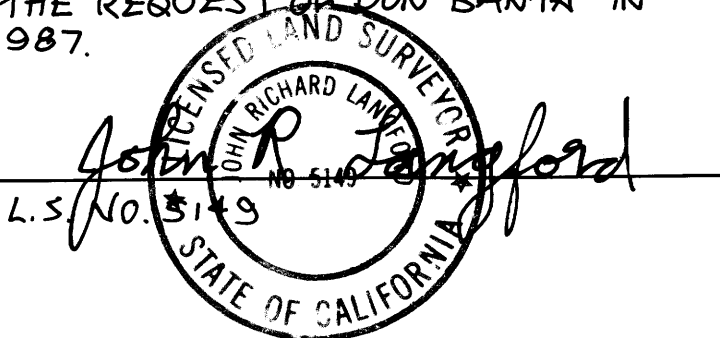
COUNTY RECORDER'S CERTIFICATE

FILED THIS 21st DAY OF March 1988 AT 9:26 A.M. IN BOOK 2 OF RECORD OF SURVEYS, PAGE 34, AT THE REQUEST OF DON BANTA.

INSTRUMENT NO. 5559

FEE \$5.00

RENN NOLAN
COUNTY RECORDER BY: *John M. Pehel*
DEPUTY COUNTY RECORDER



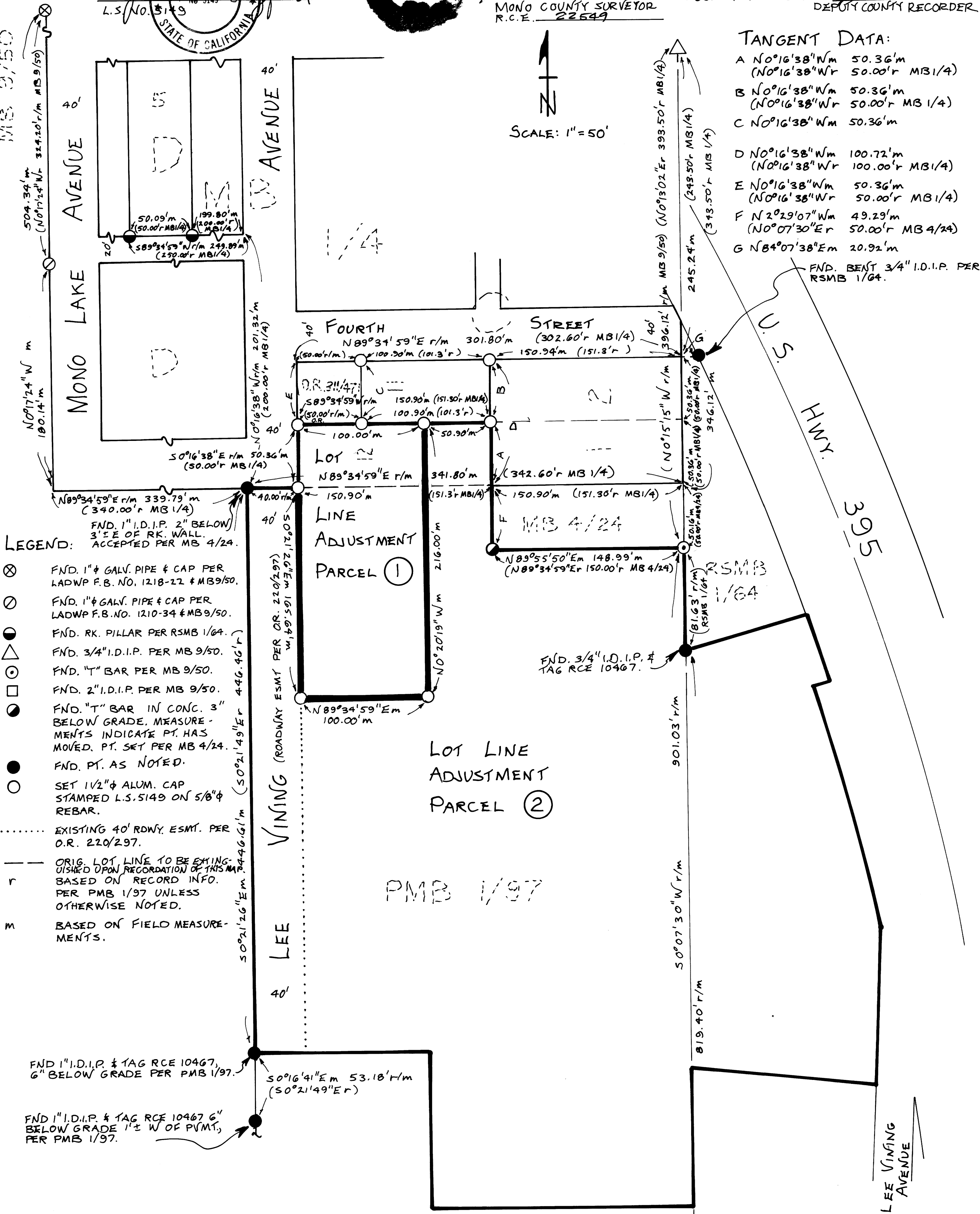
MONO COUNTY SURVEYOR
R.C.E. 22549

SCALE: 1" = 50'

TANGENT DATA:

- A N0°16'38"Wm 50.36'm
(N0°16'38"W r 50.00'r MB 1/4)
- B N0°16'38"Wm 50.36'm
(N0°16'38"W r 50.00'r MB 1/4)
- C N0°16'38"Wm 50.36'm
- D N0°16'38"Wm 100.72'm
(N0°16'38"W r 100.00'r MB 1/4)
- E N0°16'38"Wm 50.36'm
(N0°16'38"W r 50.00'r MB 1/4)
- F N2°29'07"Wm 49.29'm
(N0°07'30"E r 50.00'r MB 4/24)
- G N84°07'38"Em 20.92'm

FND. BENT 3/4" I.D.I.P. PER RSMB 1/64.



BASIS OF BEARINGS: S0°07'30"W, THE LINE BETWEEN A RESET 2" I.P. AS THE ORIG. 1/16 COR. PER MB 1/4 AND A "T" BAR SET PER MB 4/24 AS SHOWN ON PMB 1/97.