

COMPONENTS AND CLADDING  
DESIGN WINDLOAD PRESSURE (ULT)

PRESSURES ARE BASED ON 10 SQ FT AREA

- ROOF  
① +12 psf  
② -29 psf  
③ +12 psf  
④ -49 psf  
⑤ +12 psf  
⑥ -49 psf

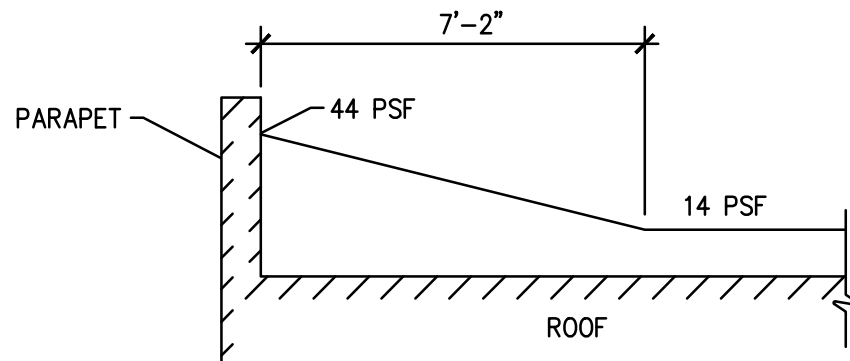
- WALLS  
④ +29 psf  
⑤ -31 psf  
⑥ +29 psf  
⑦ -39 psf

OVERHANG  
-46 psf (UPLIFT)

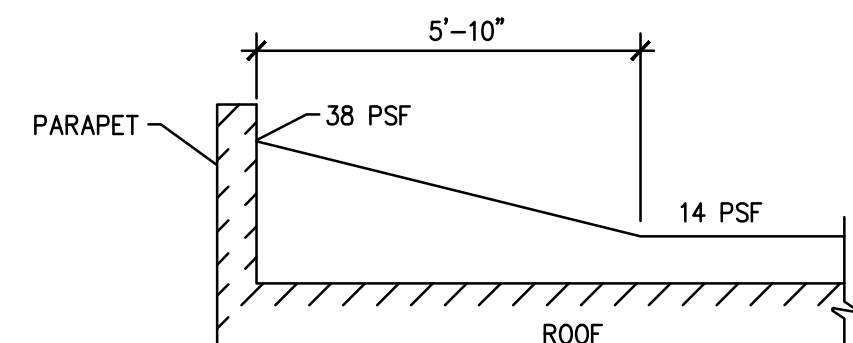
PLUS AND MINUS SIGNS INDICATE  
PRESSURES ACTING TOWARD AND  
AWAY FROM SURFACES, RESPECTIVELY

| WALL PRESSURE (ULT) (PER ASCE7-10 CHAPTER 27 PART 1) |          |
|--|----------|
| WINDWARD   | LEEWARD  |
| 0'-15'   | 16.6 PSF |
| 20.0'  | 17.6 PSF |
|  | 10.4 PSF |

| WIND NET UPLIFT (ASD) (PSF) |                        |              |                        |
|-----------------------------|------------------------|--------------|------------------------|
| ROOF DECK                   |                        | ROOF TRUSSES |                        |
| TYPICAL                     | W/IN 4.0' OF PERIMETER | TYPICAL      | W/IN 4.0' OF PERIMETER |
| 19                          | 29                     | 12           | 15                     |



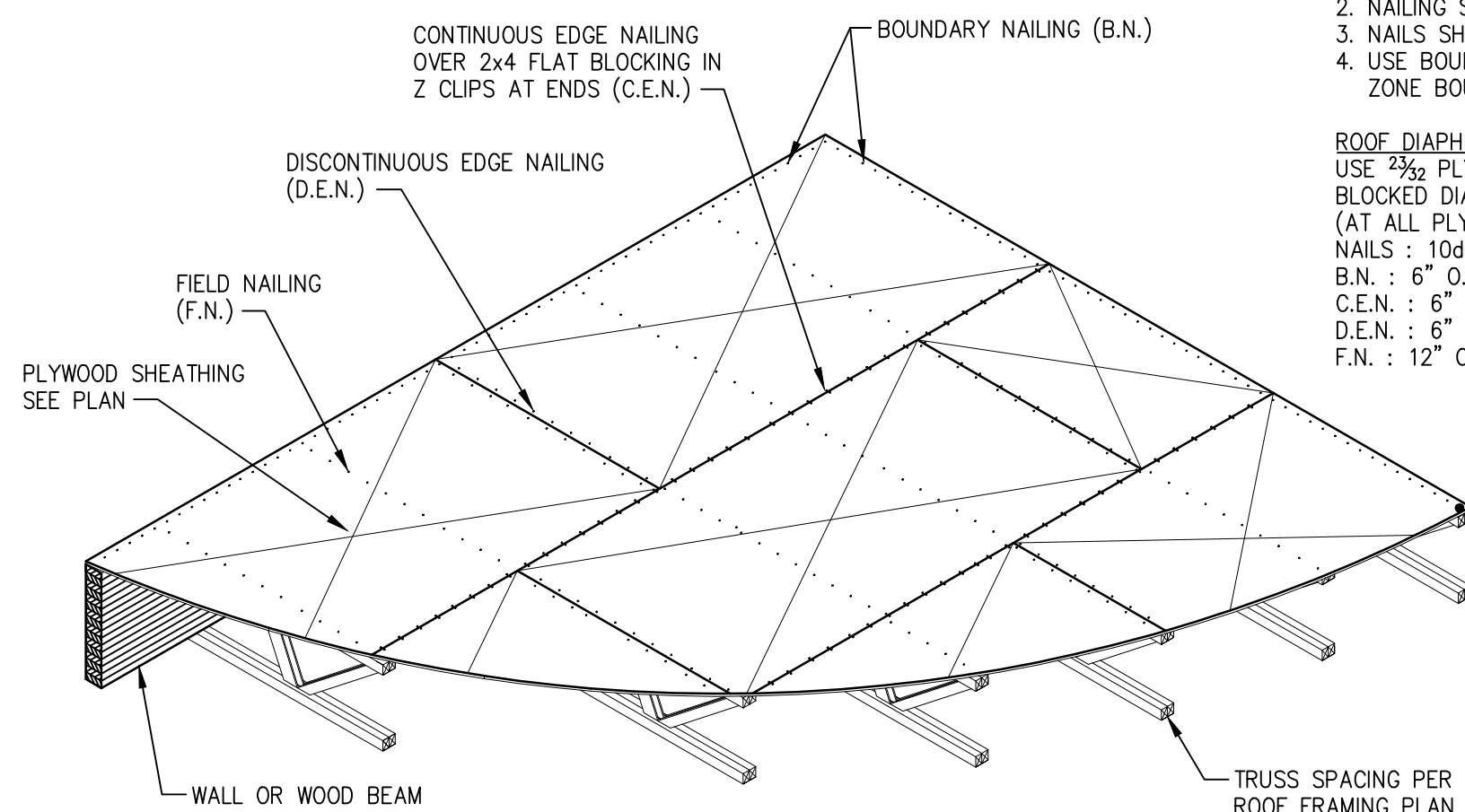
SNOW DRIFT AT BLDG END WALL  
PERPENDICULAR TO TRUSSES



SNOW DRIFT AT EACH END OF TRUSSES

TYPICAL LOAD DIAGRAM DETAIL 3

S-101

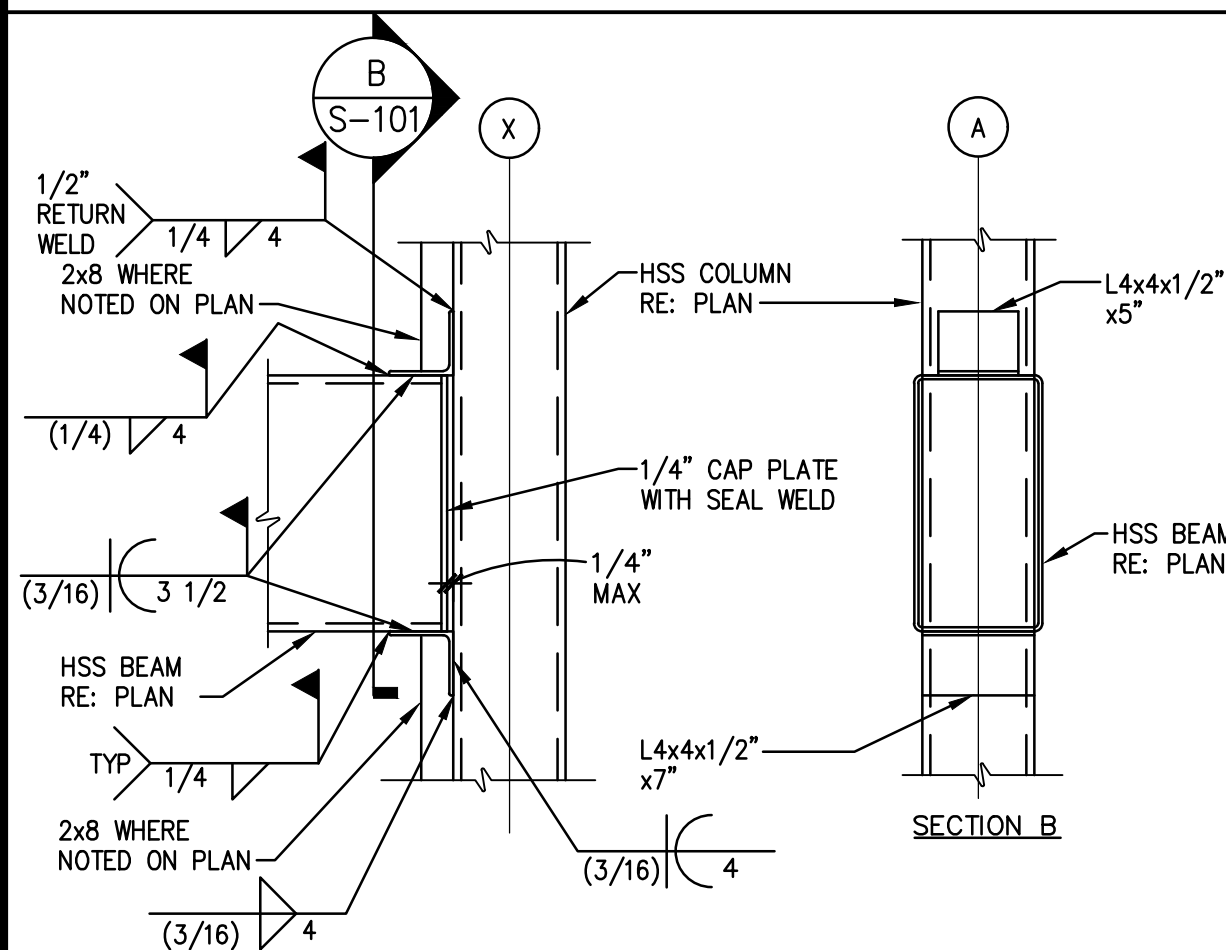


- NOTES:  
1. RUN LONG DIMENSION OF PLYWOOD PERPENDICULAR TO TRUSSES.  
2. NAILING SIZE AND SPACING AS NOTED ON PLAN.  
3. NAILS SHALL HAVE A MIN. 3/4" EDGE DISTANCE.  
4. USE BOUNDARY NAILING CONTINUOUS @ ALL NAILING ZONE BOUNDARIES. SEE PLAN FOR ZONE EXTENTS.

ROOF DIAPHRAGM  
USE 3/4" PLYWOOD, INDEX 48/24  
BLOCKED DIAPHRAGM 2x4 FLAT IN Z CLIP  
(AT ALL PLYWOOD EDGES, TYP. U.N.O.)  
NAILS : 10d COMMON NAILS  
B.N. : 6" O.C.  
C.E.N. : 6" O.C.  
D.E.N. : 6" O.C.  
F.N. : 12" O.C.

TYPICAL ROOF DIAPHRAGM DETAIL 2

S-101

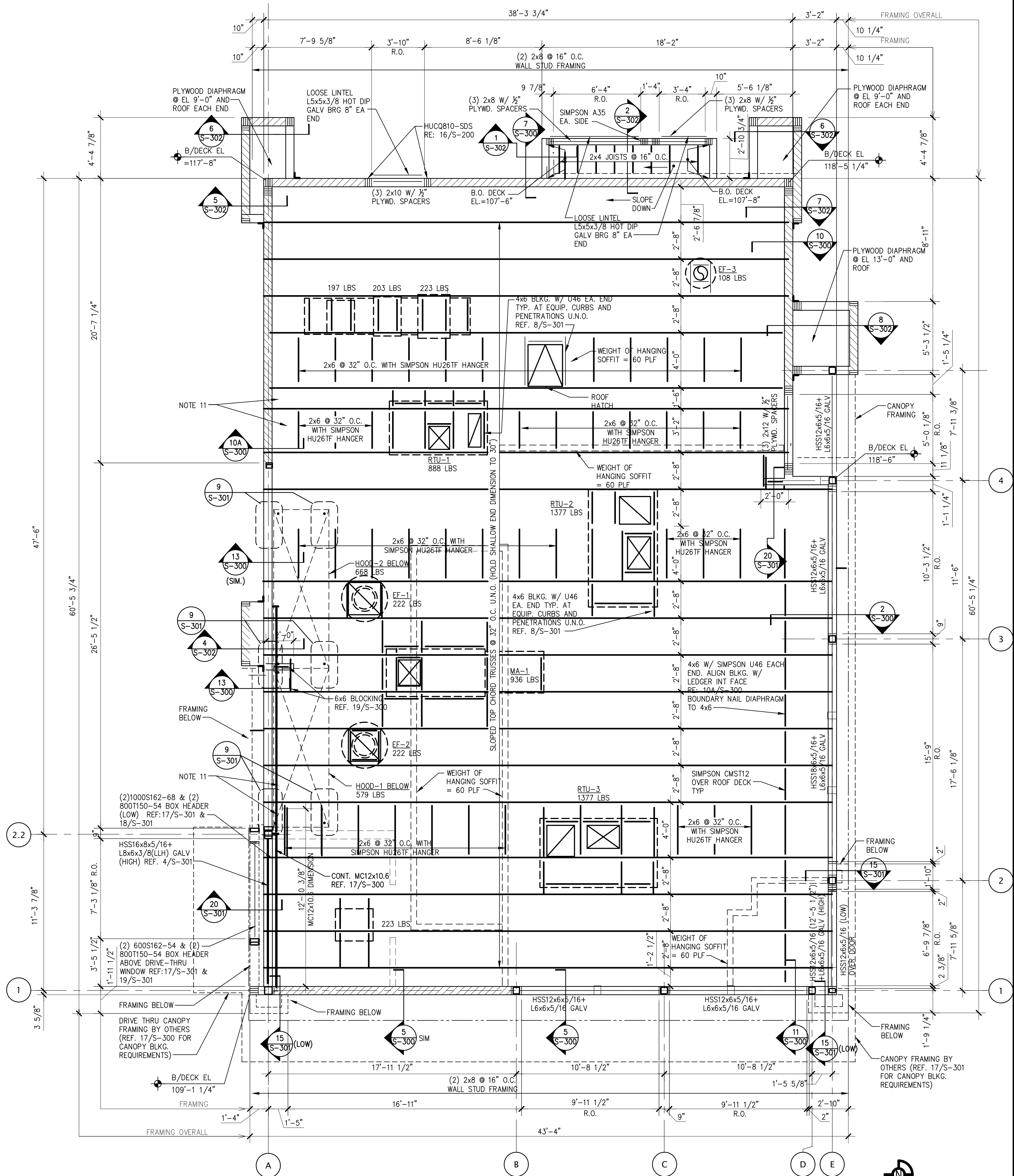


HSS BEAM TO COL CONN 4

SCALE: 1"=1'-0"

TYPICAL ROOF NOTES 1

S-101



TYPICAL ROOF FRAMING PLAN A

S-101



PANDA EXPRESS, INC.  
1683 Walnut Grove Ave.  
Rosemead, California  
91770

Telephone: 626.799.9898  
Facsimile: 626.372.8288

All ideas, designs, arrangement and plans indicated or represented by this drawing are the property of Panda Express Inc. and were created for use on this specific project. None of these ideas, designs, arrangements or plans may be used by or disclosed to any person, firm, or corporation without the written permission of Panda Express Inc.

REVISIONS:

ISSUE DATE:

STATE PERMIT 06.07.21

DRAWN BY: DWG

PANDA PROJECT #: D8060

ARCH PROJECT #: JCDT20-0240



NORR  
ARCHITECTS PLANNERS

PANDA EXPRESS

TRUE WARM & WELCOME  
390 W Spring Mill Pointe Dr.  
Westfield, IN 46074

S-101

ROOF FRAMING PLAN

TRUE WARM & WELCOME 2300 R5