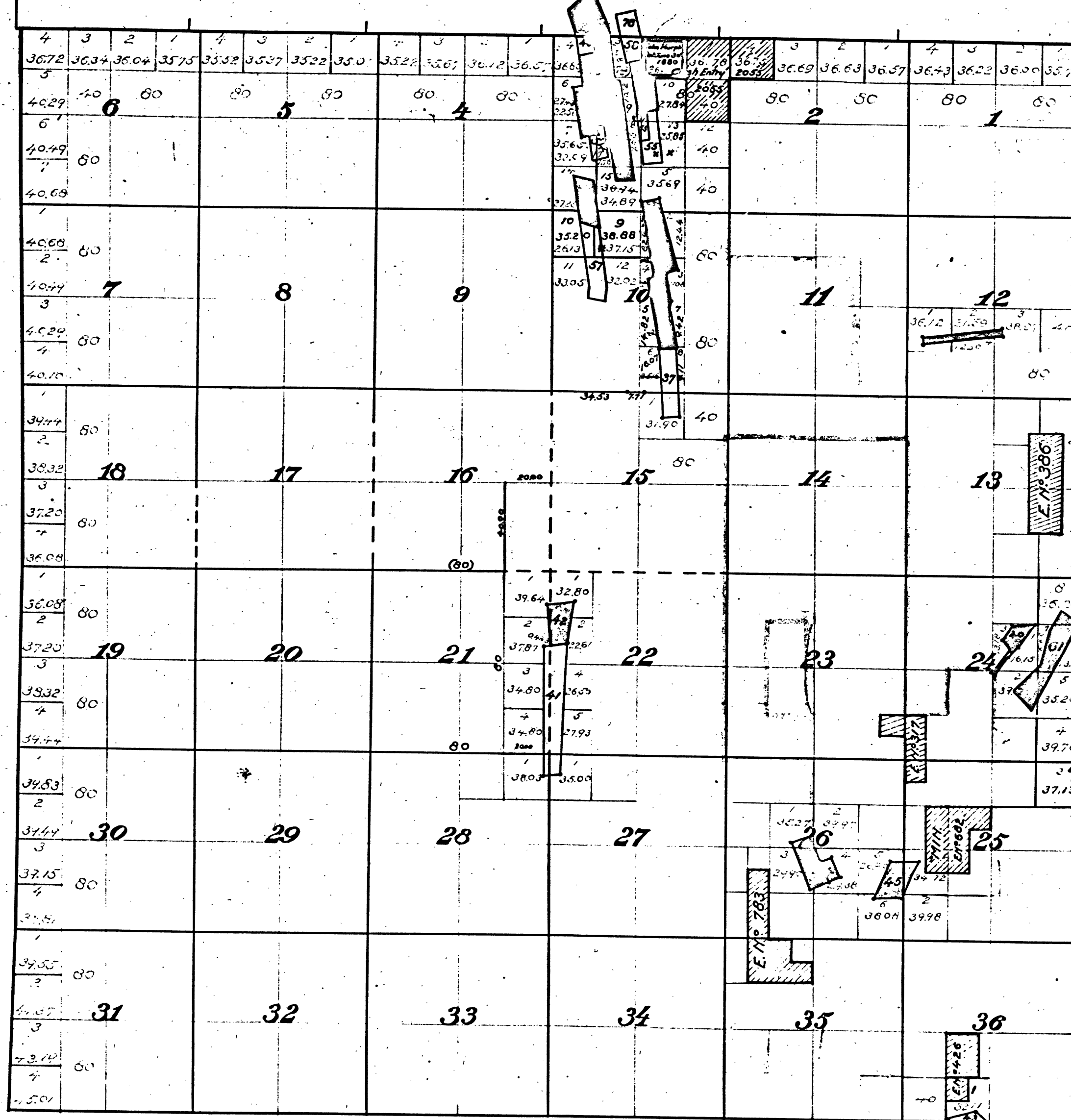


Township N^o 5 North, Range N^o 11 East, Mount Diablo Meridian.

Mineral Land returned Jan'y 18 '71 & May 4 '71.



- 66-v 44. 37 Hancock & Tibbits Q. M. Pat. July 29, 72. V35-25
- 10-v 46. 38 Union Company's July 29, 72. V67-23
- 231-122. 39 Hardenbergh Jan'y 10, 74. V55-21
- 212-190. 40 Chile Gulch Fluming Co. Pl. Apr. 6, 74. V5-13
- 836-663. 41 Gwin Quartz Mine Feb. 26, 76. V35-24
- 286-203. 42 North Paloma Quartz M. June 2, 75. V62-20
- 311-308. 43 Williams & Howes Placer Feb. 1, 76. V71-12
- 404-438. 44 Macnevin Quartz M. May 2, 76. V99-10
- 1101-809. 45 Polleton Placer Jan'y 13, 76. V79-3
- 852-639. 46 Empire Quartz Jan'y 18, 76. V83-18, V83-17
- 1017 734. 47 Valparaiso Sept. 30, 76. V105-15
- 48. Fellows & Moulton May 31, 76. V86-10
- 49. Sylvester & Bostwick Post. July 3, 76. V77-2
- 50. Loveridge & Lockwood S.G.L. May 18, 76. V77-7
- 51. Ingals Pat. March 18, 76. V97-2
- 52. Deavitt S.G.L. Aug. 13, 76. V90-28
- 53. Sylvester and Briggs Pat. June 30, 76. V87-5
- 54. Mahoney and Hall Pat. Jan'y 3, 76. V81-21
- 55. Vaughn Quartz Mine Pat. Jan'y 3, 76. V81-21
- 56. Sargent Pat. Jan'y 3, 76. V81-21
- 57. Mammoth Gold Quartz Mine Pat. Jan'y 3, 76. V81-21
- 58. Amador Queen N1 Q.M. Pat. Jan'y 3, 76. V81-21
- 59. Kruger Lode Pat. Jan'y 3, 76. V81-21
- 60. Empire Gravel Mine Pat. Jan'y 3, 76. V81-21
- 61. Green Mountain Placer Pat. Jan'y 3, 76. V81-21
- 317. L.S. Pat. Jan'y 3, 76. V81-21
- 386. Pat. Jan'y 3, 76. V81-21
- 426. Pat. Jan'y 3, 76. V81-21
- 682. Pat. Jan'y 3, 76. V81-21
- 783. Pat. Jan'y 3, 76. V81-21
- 848 62 McKay & Love Q.M. Pat. Jan'y 3, 76. V81-21
- 1209-847 63 Nelly Gold Pat. Jan'y 3, 76. V81-21

Amended in Sec. 3. S.G.L. May 18 '80. July 26 '80. Sept. 30 '80.
 Sec. 10 Nov. 26 '75. Aug. 9, '79
 Sec. 12 Nov. 26 '75.
 Sec. 22 Mch. 4 '71
 Sec. 26 Mch. 4 '71
 Sec. 36 Mch. 4 '74

The above Diagram of Township N^o 5 North, Range N^o 11 East of Mount Diablo Meridian correctly shows the amendments made in accordance with the Plats of the Mining Surveys approved to date.
 U.S. Surveyor General's Office.
 San Francisco, California.
 October 3^d 1876.

H. Collins
 U.S. Surv. Gen'l. Cal.

41 413

The above diagram of Sections 3. Township N^o 5 North, Range N^o 11 East Mount Diablo Meridian, is correctly copied from the original Map as amended and on file in this Office.
 U.S. Surveyor General's Office.
 San Francisco, California.
 September 30th 1880.

Theo Wagner
 U.S. Surv. Gen'l. Cal^o

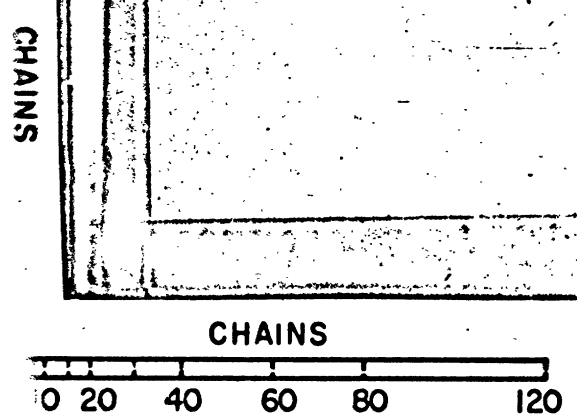
T. 5 N. R. 11 E.
 M. D. M.

58. Amador Queen N1 Quartz Mine.
 59. Kruger Quartz Mine. V97-2

DEPARTMENT OF THE INTERIOR,
 GENERAL LAND OFFICE,
 Washington, D. C. *Ass't. Sec'y* 1903.

I hereby certify that this is a true copy of the plats of official survey of the lands to which it relates, on file in this office.

H. Collins
 Recorder, General Land Office.



BLM 226