

18 17
19 20

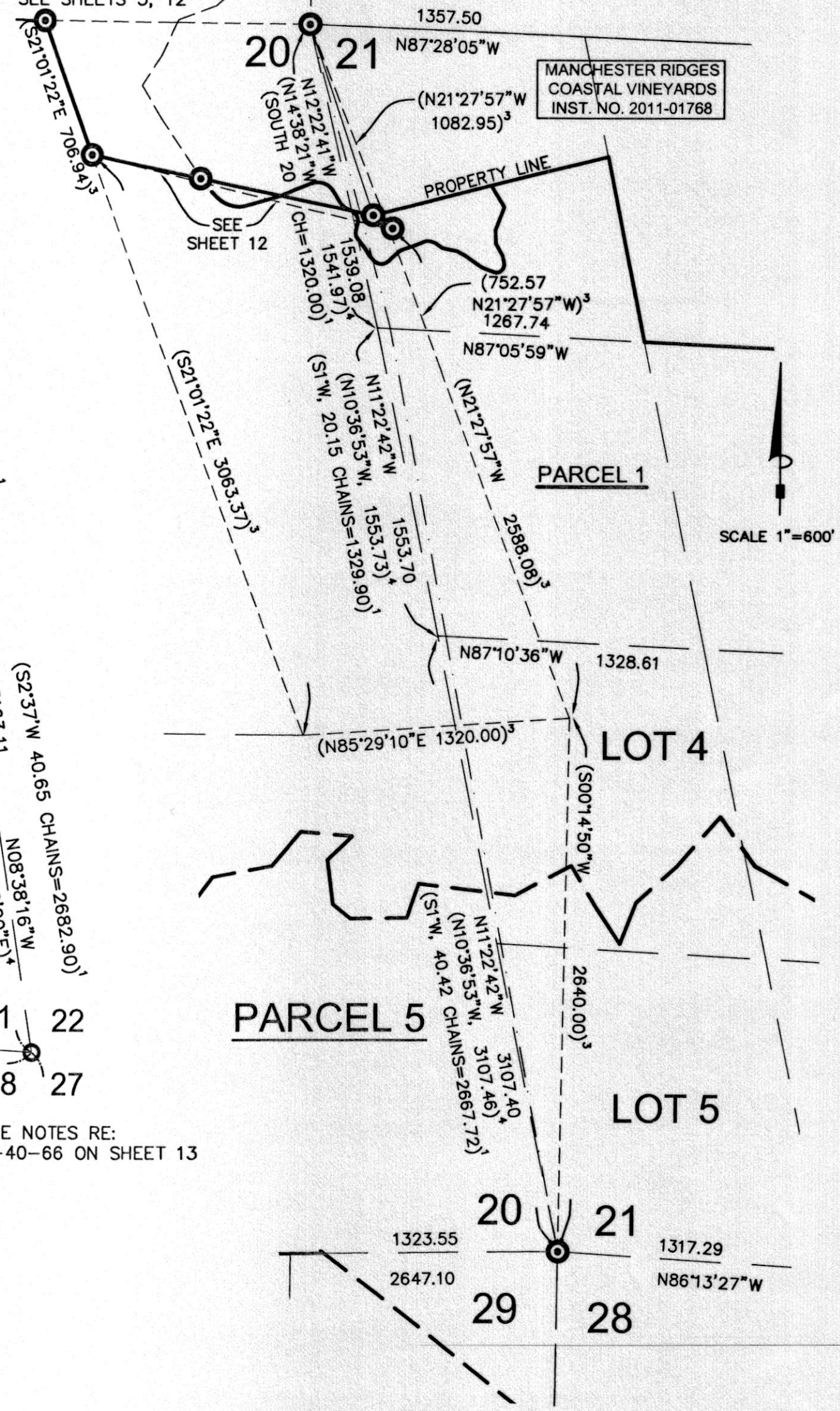
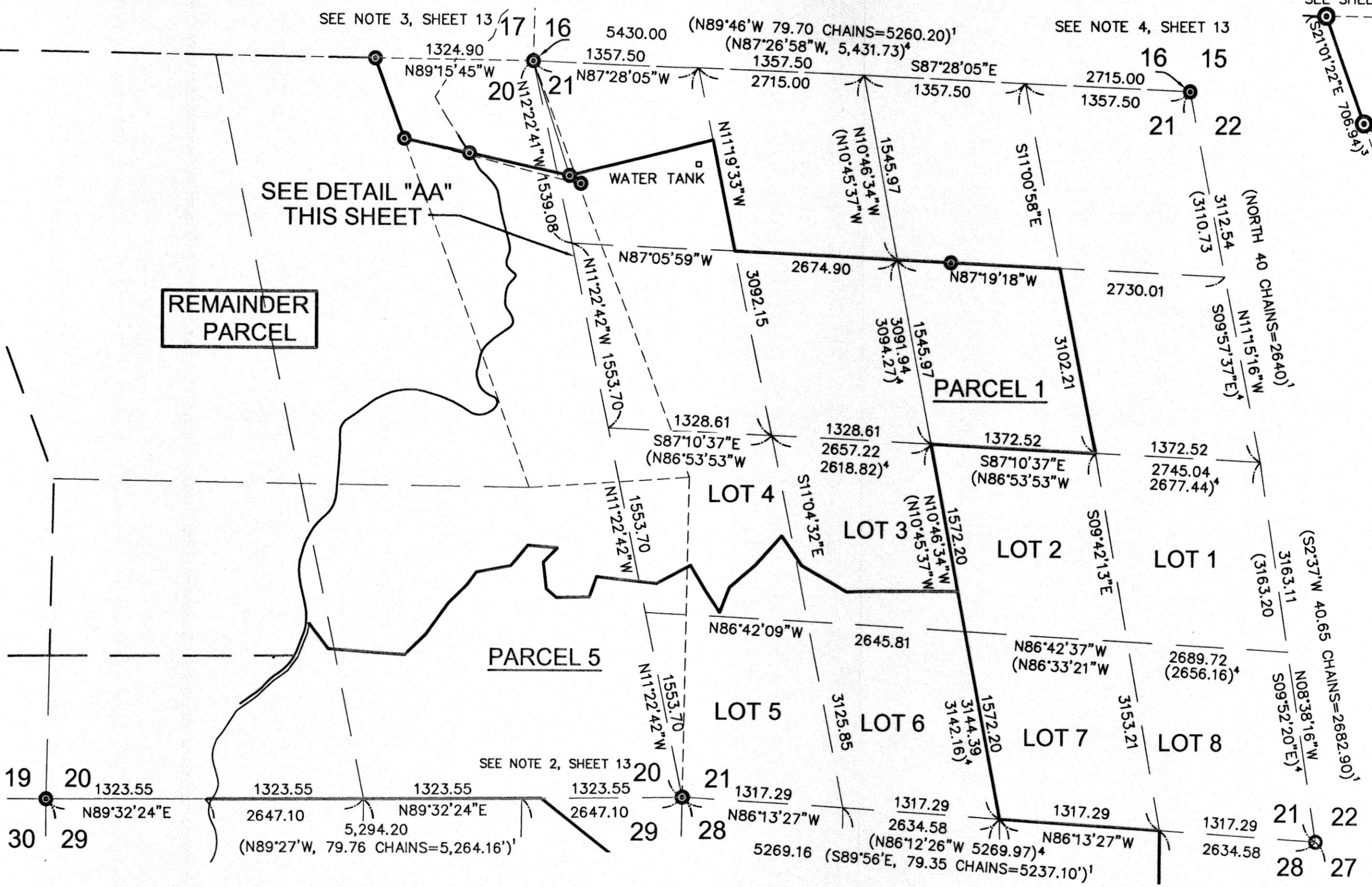
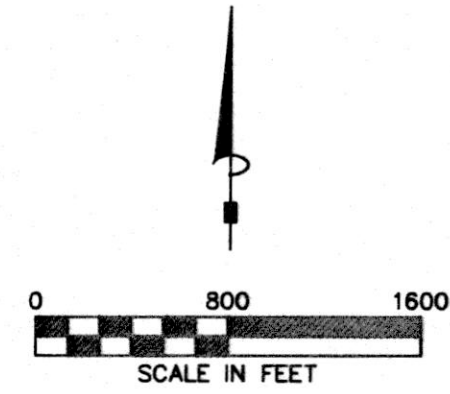
SEE NOTE 3, SHEET 13

SEE NOTE 4, SHEET 13

SEE SHEETS 3, 12

SEE DETAIL "AA"
THIS SHEET

REMAINDER
PARCEL



LEGEND

- CORNER FOUND PER MAP CASE 2, DRAWER 40, PAGE 66
- ▲ CORNER SET AS NOTED
- 3/4" IRON PIPE PLUGGED RCE 21908
- SET MONUMENTS AS NOTED
- ⊙ FOUND CORNER AS DESCRIBED
- () RECORD BEARINGS AND DISTANCES AGREE WITH THIS SURVEY UNLESS SHOWN OTHERWISE. RECORD DATA FROM:

1. GLO
2. MAP CASE 2, DRAWER 11, PAGE 73, M.C.R.
3. MAP CASE 2, DRAWER 28, PAGE 60, M.C.R.
4. MAP CASE 2, DRAWER 40, PAGE 66, M.C.R.
5. MAP CASE 2, DRAWER 45, PAGE 83, M.C.R.
6. RECORD DATA PER BOOK 1590 O.R. PAGE 338, M.C.R.
7. RECORD DATA PER BOOK 1590 O.R. PAGE 339, M.C.R.
8. RECORD DATA PER INSTRUMENT NO. 2011-01768

SECTIONAL BREAKDOWN OF SECTION 21

T.12N., R.12 W., M.D.M.

AMENDED MAP

TO CORRECT INSUFFICIENT LINE WEIGHT OF
SECTIONAL BREAKDOWN LINES AS SHOWN
IN MAPS, DRAWER 82, PAGES 4 THROUGH
19, M.C.R.

DETAIL "AA"

AMENDED PARCEL MAP

OF A PARCEL SUBDIVISION NUMBER P1-2007
BEING A PORTION OF SECTIONS
20, 21, 28, 29, 30, 32 AND 33.
T.12N., R.12W., M.D.M.
MENDOCINO COUNTY, CALIFORNIA, SEPTEMBER, 2011

SHEET 6 OF 16

#017

MAPS
DRAWER 82
PAGE 35

R09119