



PANDA RESTAURANT GROUP INC.
1683 Walnut Grove Ave.
Rosemead, California
91770
Telephone: 626.799.9898
Facsimile: 626.372.8288

All ideas, designs, arrangement and plans indicated or represented by this drawing are the property of Panda Express Inc. and were created for use on this specific project. None of these ideas, designs, arrangements or plans may be used by or disclosed to any person, firm, or corporation without the written permission of Panda Express Inc.

REVISIONS:

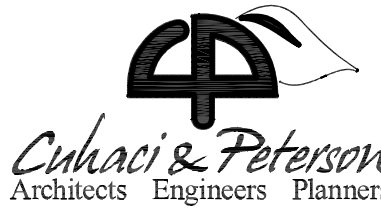
1 ISSUE FOR BID 06.04.2021

ISSUE DATE:

1 04.29.2021 ISSUE FOR PERMIT
2 06.04.2021 ISSUE FOR BID

DRAWN BY:

PANDA PROJECT #: - S8-22-D8135
C&P PROJECT #: - 2200775



2600 Maitland Center Pkwy, Maitland, FL 32751
P (407) 661-9100
F (407) 661-9101
Panda Express Contract: PAA C00026

06.04.2021

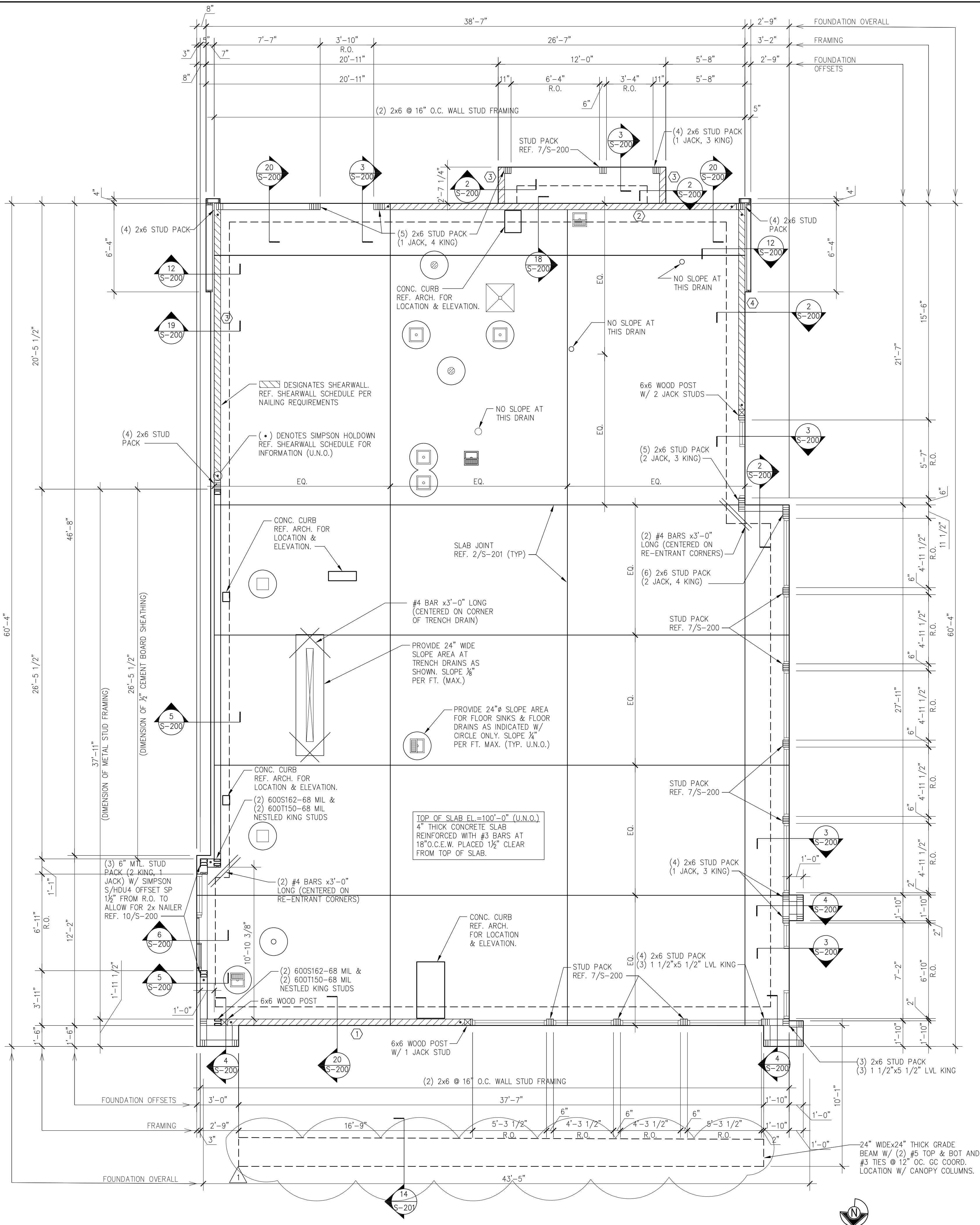
PANDA EXPRESS

TRUE WARM AND WELCOME 2300
SKYBROOKE BOULEVARD & STATE ROAD 54
LUTZ, FL 33558

S-100

FOUNDATION PLAN

TRUE WARM & WELCOME 2300 RA



PLAN NOTES

1. REF. SHEET S-000 FOR STRUCTURAL NOTES AND SPECIAL INSPECTIONS.
2. REF. 3/S-201 FOR TYPICAL PIPE AND TRENCH DETAIL AS REQUIRED.
3. REF. 4/S-201 FOR TYPICAL SILL PLATE BOLT DETAIL AS REQUIRED.
4. REF. 5/S-201 FOR TYPICAL STEP FOOTING DETAIL AS REQUIRED.
5. REF. 6/S-201 FOR TYPICAL GRADE BEAM STIRRUP DETAIL AS REQUIRED.
6. REF. 7/S-201 FOR TYPICAL REINFORCING BAR DETAIL AS REQUIRED.
7. REF. 8/S-201 FOR TYPICAL CORNER BAR DETAIL AS REQUIRED.
8. REF. 17/S-200 FOR TYPICAL NON BEARING WALL CONNECTION AT SLAB AS REQUIRED.
9. REF. 3/S-301 FOR TYPICAL FRAMING NOTCHES DETAIL AS REQUIRED.
10. REF. 4/S-301 FOR TYPICAL WALL FRAMING DETAILS AS REQUIRED.
11. REF. 11/S-200 FOR TYPICAL TRASH ENCLOSURE DETAIL AS REQUIRED.
12. REF. 9/S-201 FOR TYPICAL CURB DETAIL AS REQUIRED.
13. REF. 15/S-200 FOR TYPICAL LIGHT POLE BASE DETAIL AS REQUIRED.
14. REF. 12/S-200 AND 16/S-200 FOR TYPICAL UMBRELLA FOOTING AS REQUIRED.
15. REF. 10/S-201 FOR TYPICAL TRENCH DRAIN DETAIL AS REQUIRED.
16. REF. 11/S-201 FOR TYPICAL DRAIN DETAIL AS REQUIRED.
17. COORDINATE WITH ARCHITECTURAL, MECHANICAL AND PLUMBING DRAWINGS FOR LOCATIONS OF ALL DEPRESSIONS, CURBS, DRAINS, ETC. IN FLOOR SLAB.

SHEARWALL SCHEDULE

TYPE	NAIL SPACING	HOLDOWN	ANCHOR BOLTS
①	10d @ 4" O.C. (NOTE 9)	(2) HDU11-SDS2.5	3/8" @ 12" O.C.
②	10d @ 3" O.C.	HDU14-SDS2.5	3/8" @ 24" O.C.
③	10d @ 4" O.C.	HDU8-SDS2.5	3/8" @ 24" O.C.
④	10d @ 3" O.C.	HDU14-SDS2.5	3/8" @ 24" O.C.

⊗ - DESIGNATES SHEARWALL TYPE

NOTES:

1. USE 10d COMMON NAILS.
2. NAIL PANEL FACES @ 12" O.C.
3. USE 1 5/8" PLYWOOD.
4. STAGGER PLYWOOD JOINT AND SILL PLATE NAILING.
5. FRAMING MEMBERS OR BLOCKING SHALL BE PROVIDED AT THE EDGES OF ALL SHEETS IN SHEARWALLS.
6. REFER TO 9/S-200 FOR HOLD DOWN ANCHOR EMBEDMENT.
7. HOLD DOWN ANCHORS MUST BE TIED IN PLACE PRIOR TO FOUNDATION INSPECTION.
8. FRAMING AT ADJOINING PANEL EDGES SHALL BE 3 INCH NOMINAL OR THICKER AND NAILS SHALL BE STAGGERED WHERE NAILS ARE SPACED AT 3" O.C. OR ARE ON EACH FACE.
9. USE DOUBLE SHEATHING.

FOUNDATION NOTES

1

Scale: NO SCALE

S-100

FOUNDATION PLAN

A

Scale: 1/4"=1'-0"

S-100