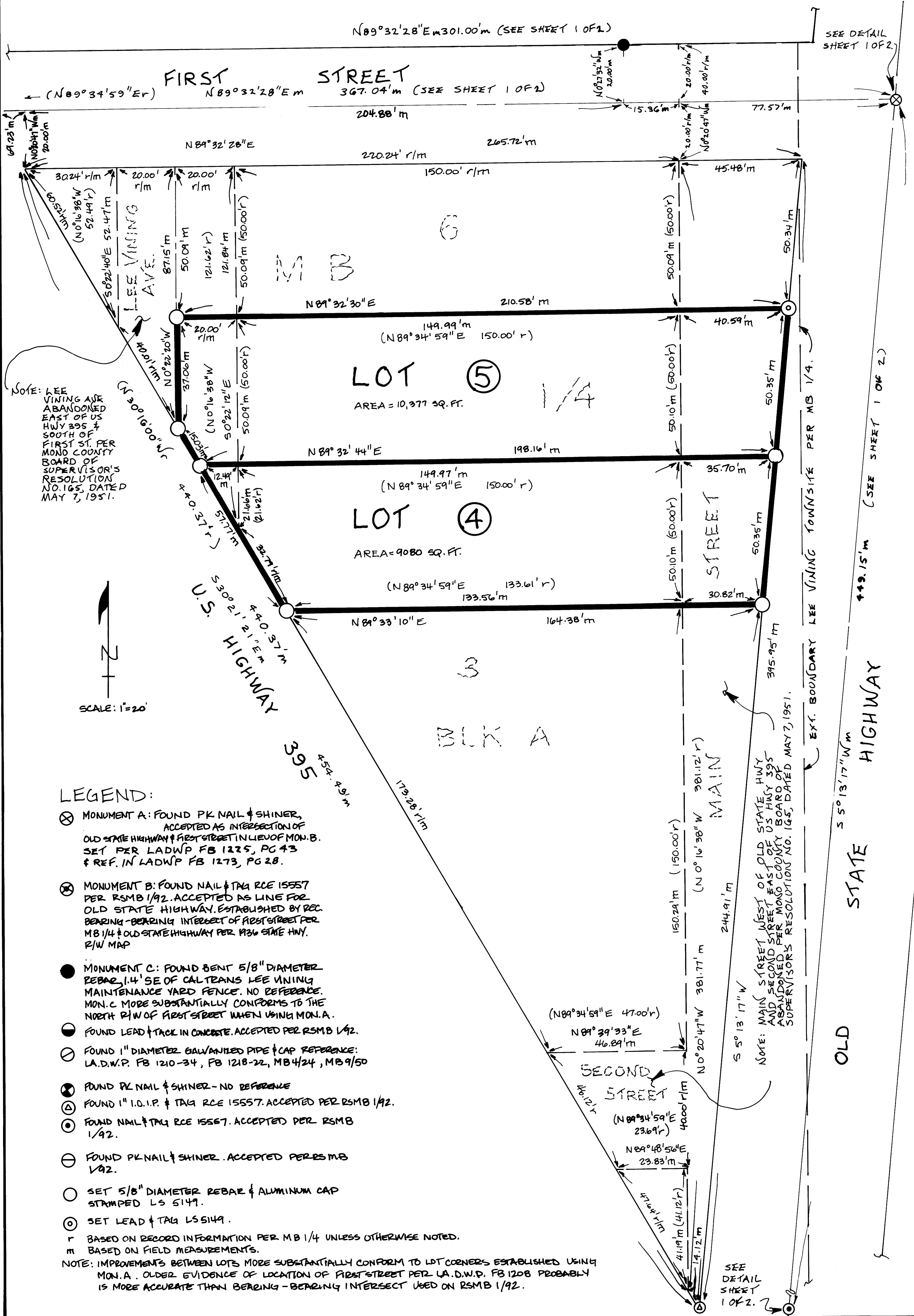


# RECORD OF SURVEY NO 34-38

A SURVEY OF LOTS 4 & 5, BLOCK A, LEE VINING TOWNSITE, MB 1/4, LOCATED IN THE SW 1/4, SECTION 9, T1N, R26E, MDB&M, MONO COUNTY, CALIFORNIA.



Job R.S. 2 Page 884