

# CORNER RECORD

BK 72 PG 5

APN No. \_\_\_\_\_ (Optional) Document Number CR 7436  
 City of OAKLAND County of ALAMEDA, California  
 Brief Legal Description City of Oakland Street Monument


## CORNER TYPE

Government Corner ☐ Control ☐  
 Meander ☐ Property ☐  
 Rancho ☐ Other ☒  
 Date of Survey 2/25/2015

## COORDINATES \*\* (Optional)

N. \_\_\_\_\_  
 E. \_\_\_\_\_  
 Zone \_\_\_\_\_ NAD27 ☐ NAD83 ☐  
 NAD 83 Epoch \_\_\_\_\_  
 Elev. \_\_\_\_\_

Corner - Left as found ☒ Found and tagged ☐ Established ☐ Reestablished ☐ Rebuilt ☐

In compliance with Section 8771 of the Professional Land Surveyors' Act, this corner record is being filed to  
 ESTABLISH X / REESTABLISH \_\_\_\_\_ the position of an existing monument PRIOR X / SUBSEQUENT \_\_\_\_\_  
 to street or highway reconstruction.

Identification and type of corner found: Evidence used to identify or procedure used to establish or reestablish the corner:  
In compliance with Section 8771 of the Professional Land Surveyors' Act, this corner record is being filed to  
establish the position of an existing monument prior to street or highway construction.

A description of the physical condition of the monument as found and as set or reset: \_\_\_\_\_  
See page 2 - Found concrete monument w/metal pin along International Blvd. and 83rd Ave.  
(Northerly), 41.58' West of Monument 20 SE 2.

## SURVEYOR'S STATEMENT

This Corner Record was prepared by me or under my direction in conformance with  
 the Land Surveyors' Act on May 19 20 15.

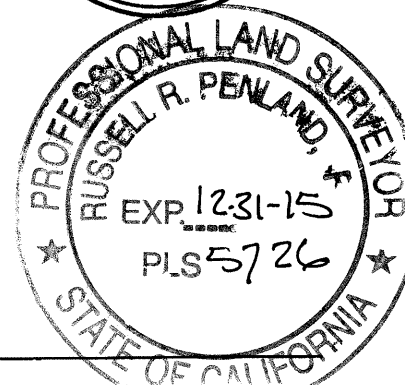
Signed Randell Scott West L.S. or R.C.E. Number 8663



## COUNTY SURVEYOR'S STATEMENT

This Corner Record was received 6-25-2015 and examined  
 and filed 9-4-2015.

Signed [Signature] Title County Surveyor

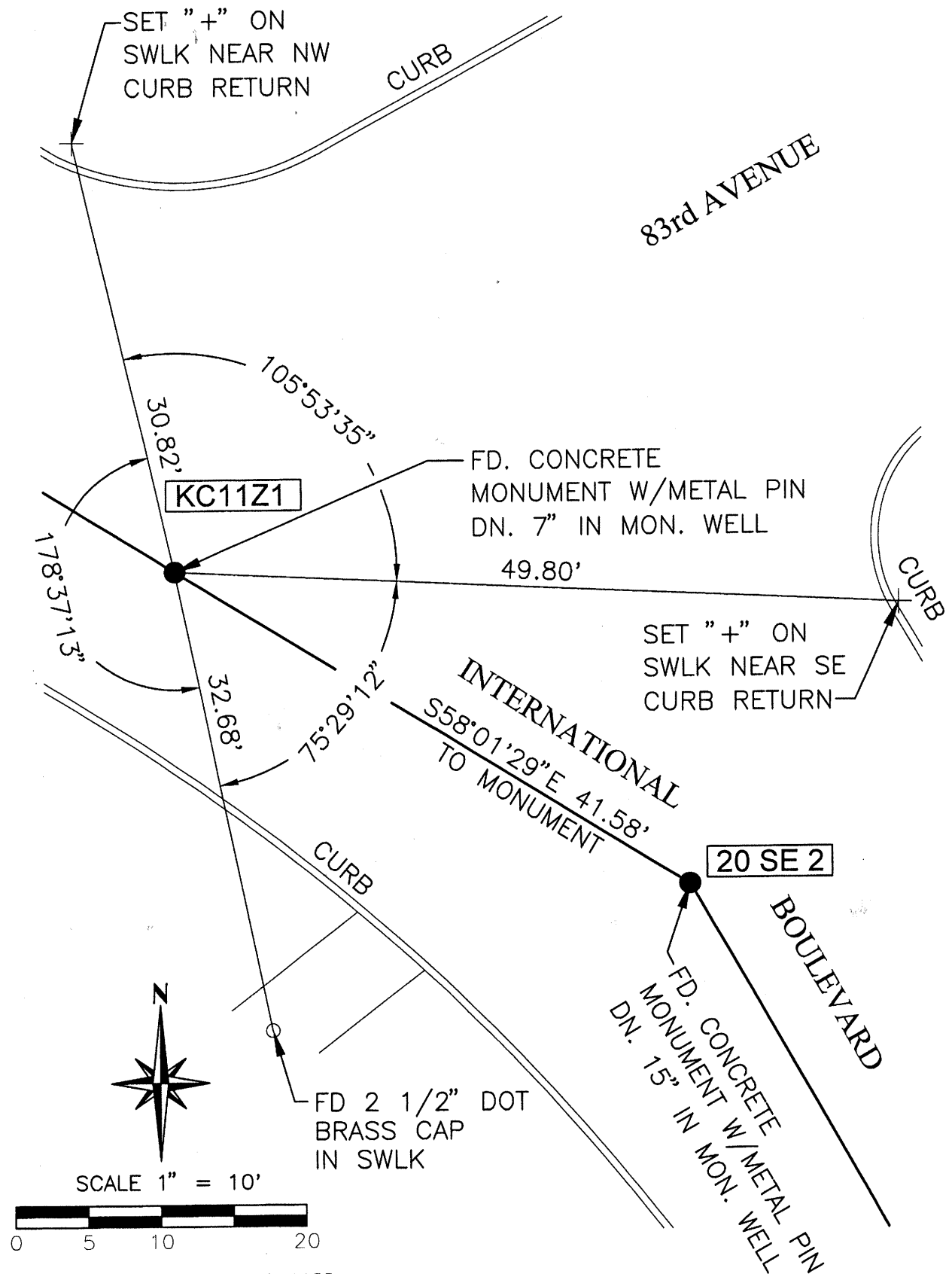


County Surveyor's Comment \_\_\_\_\_

COORDINATES \*\* Coordinates are Navigational quality only, not for retracement.

Job Number:

Spec. No:



B. C. & F. Project No. 215-0133  
McPheeters No. 115108