

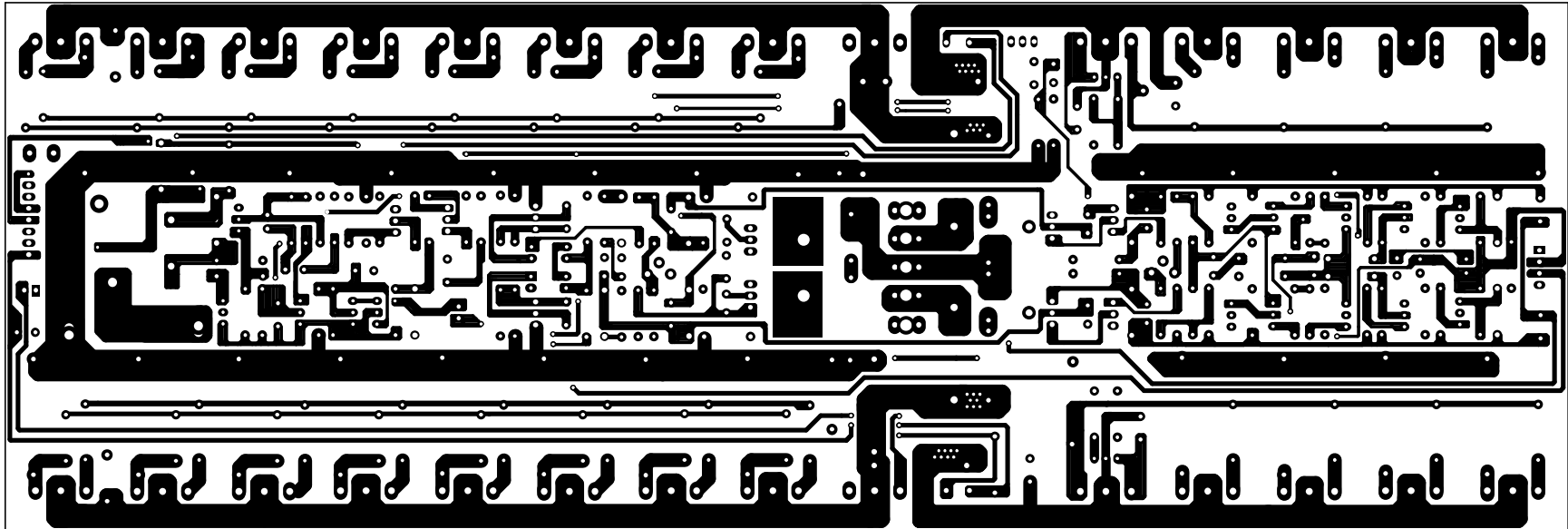
旧底图总号

底图总号

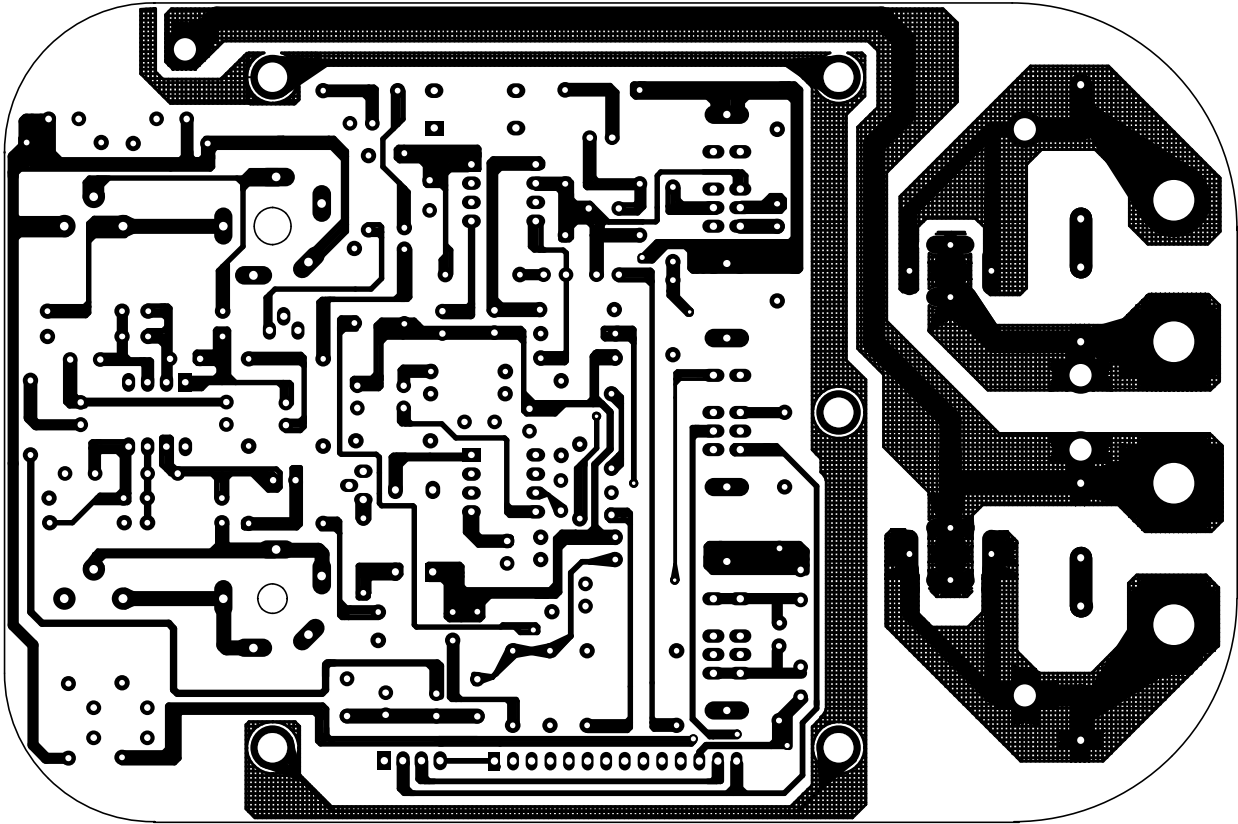
签名 日期

格式(3)

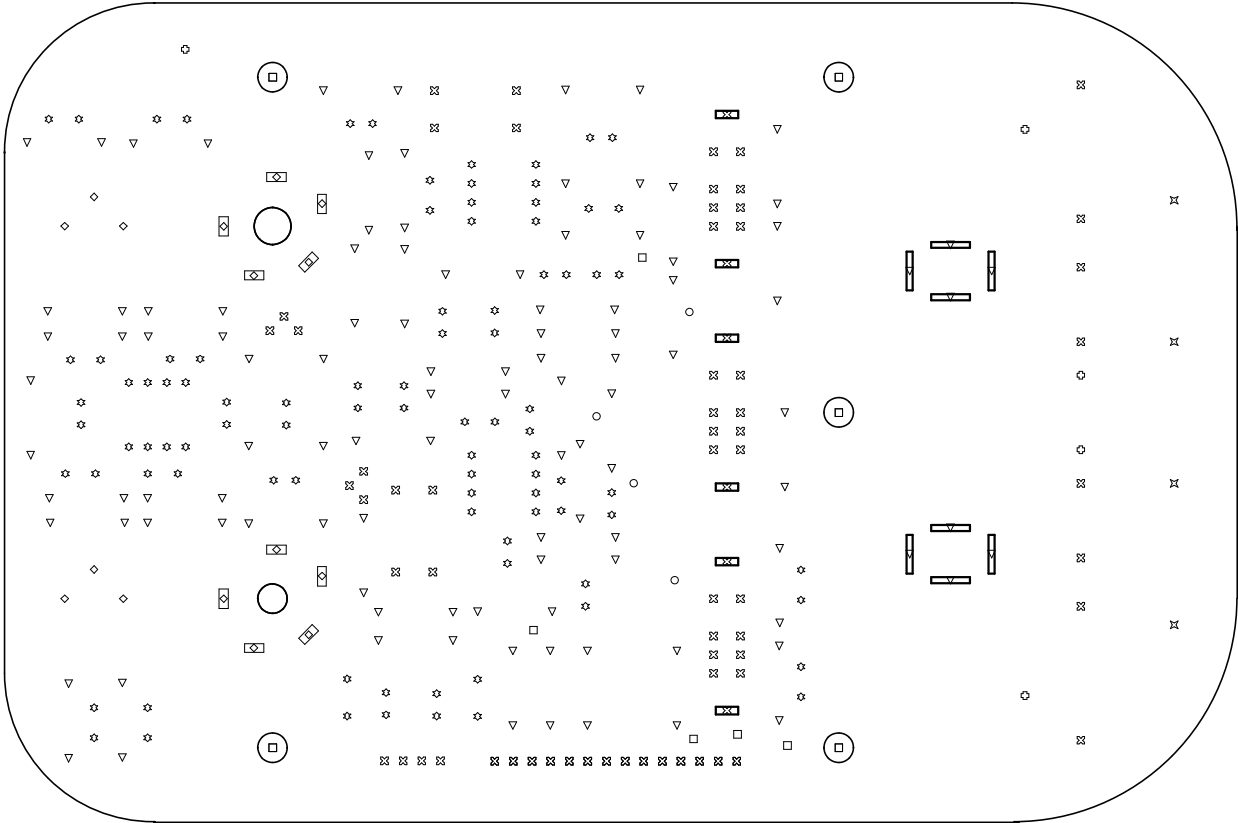
更改 标记	数量	更改单号	签 名	日期	更改 标记	数量	更改单号	签 名	日期	更改 标记	数量	更改单号	签 名	日期
拟 制					FPA-G12 功放原理图					等级标记	第 张	共 张		
审 核														
标准														
批 准														
制图：					描图：					图幅：				



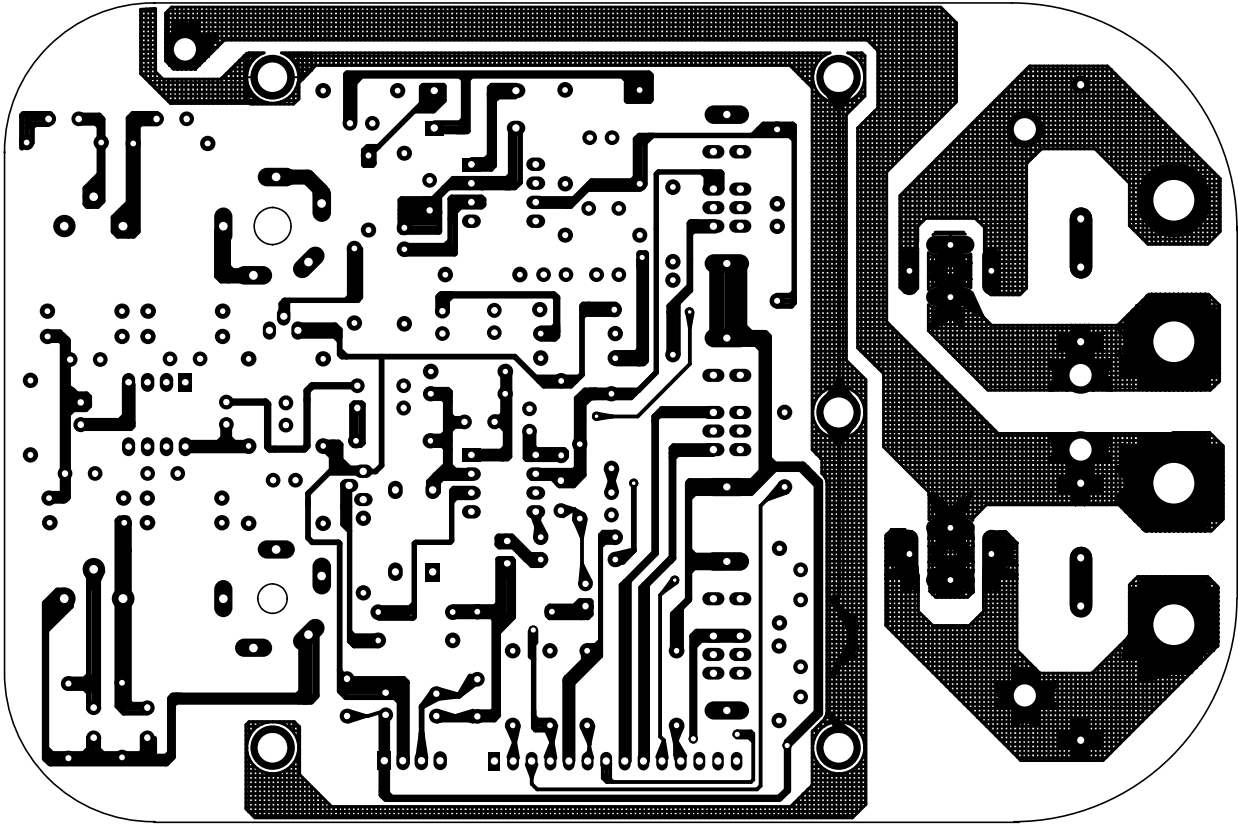
○	0.9mm	○	1.2mm	更改标记	更改单号	签 字	日 期	所 属 装 配 图 代 号	数 量				
●	1mm	○	2.6mm	设 计			2002.5/8	FPA-G12 AMP		FPA-G12,AMP,000,1			
●	1.5mm	●	1.6mm	校 对						阶段标记	重 量	比 例	
○	1.1mm	●	1.2mm	工 艺				Bottom Layer					
○	1.5mm	○	2.5mm	审 核									
○				标 准									
○				批 准									
					旧底图登记号			底图登记号			共 4 页		
											第 3 页		
											第 页		



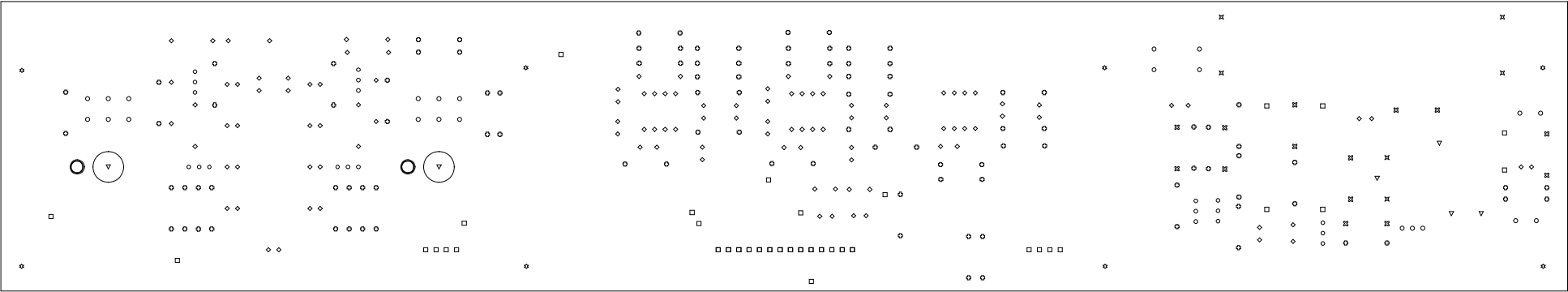
	5.2*0.8mm		0.9mm	更改标记	更改单号	签 字	日 期	所属装配图代号	数 量					
				设 计				FPA-G12 IN	FPA-G12,IN,000,2					
					0.8mm		1*3mm			校 对				阶段标记
工 艺														
	1.2mm		2.6*1.3mm	审 核				Bottom Layer						
				标 准										
	4mm		5.5mm	批 准						共 4 页		第 3 页		
				旧底图登记号						底图登记号				



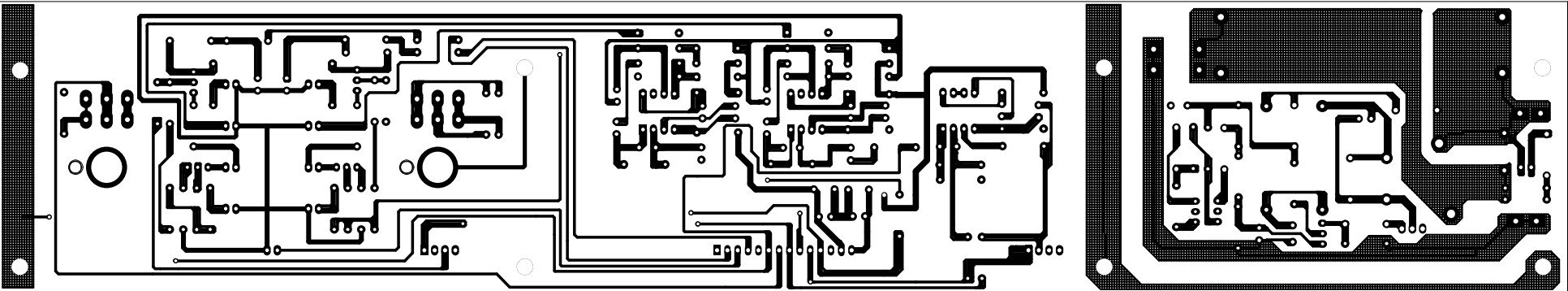
▽	5.2*0.8mm	☆	0.9mm	更改标记	更改单号	签 字	日 期	所属装配图代号	数 量	FPA—G12,IN,000,2				
				设 计				FPA—G12 IN						
▽	0.8mm	⊗	1*3mm	校 对						Drill Drawing Layer		阶段标记		重量
◇	1.2mm	◇	2.6*1.3mm	工 艺										
□	4mm	⊗	5.5mm	审 核				Drill Drawing Layer						
				标 准						共 4 页		第 4 页		
				旧底图登记号				底图登记号				第 页		



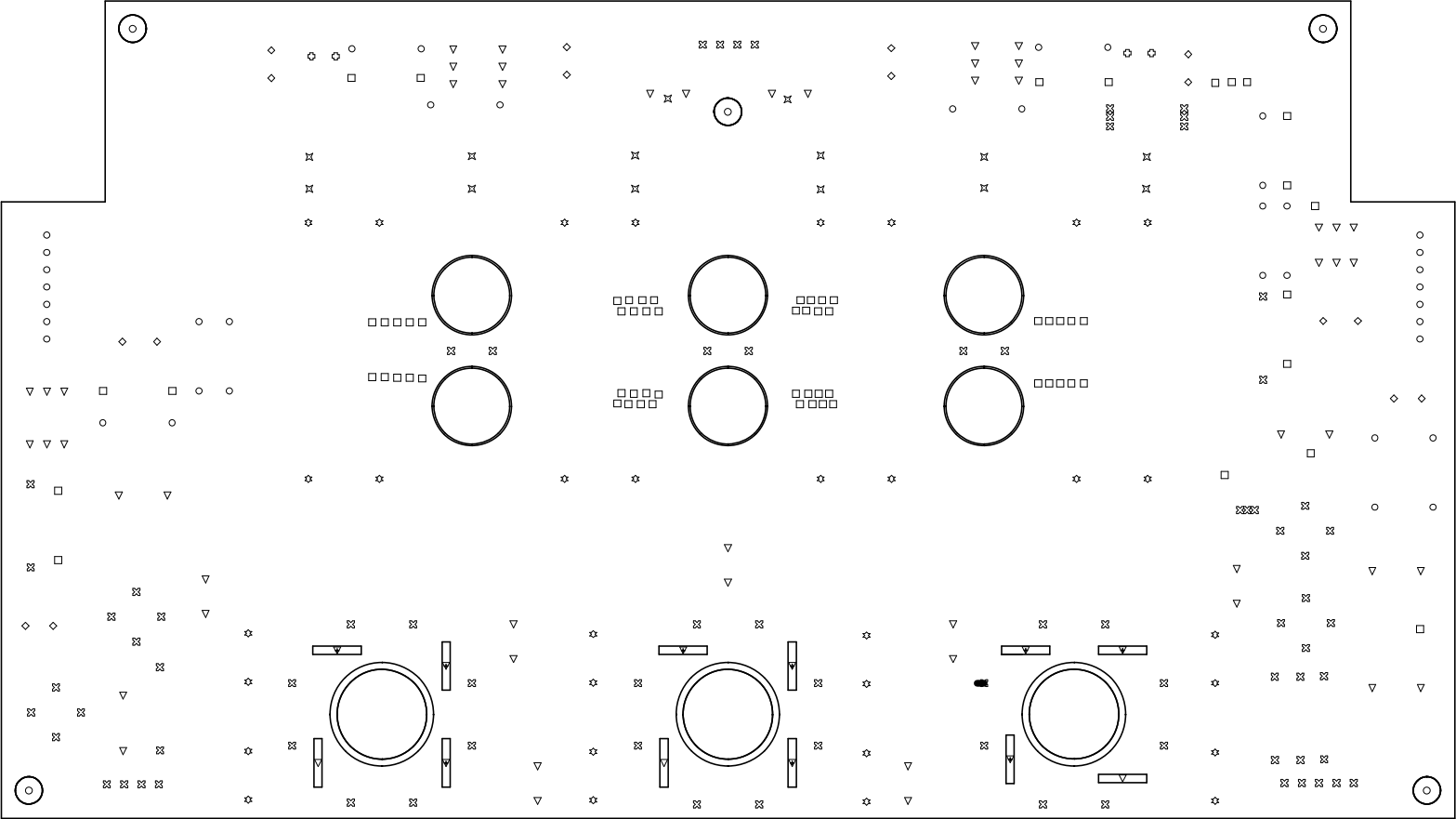
	5.2*0.8mm		0.9mm	更改标记	更改单号	签 字	日 期	所属装配图代号	数 量	FPA-G12,IN,000,2			
				设 计				FPA-G12 IN					
	0.8mm		1*3mm	校 对					Top Layer	阶段标记		重量	比例
				工 艺									
	1.2mm		2.6*1.3mm	审 核									
				标 准									
	4mm		5.5mm	批 准				共 4 页		第 2 页			
				旧底图登记号				底图登记号				第 页	



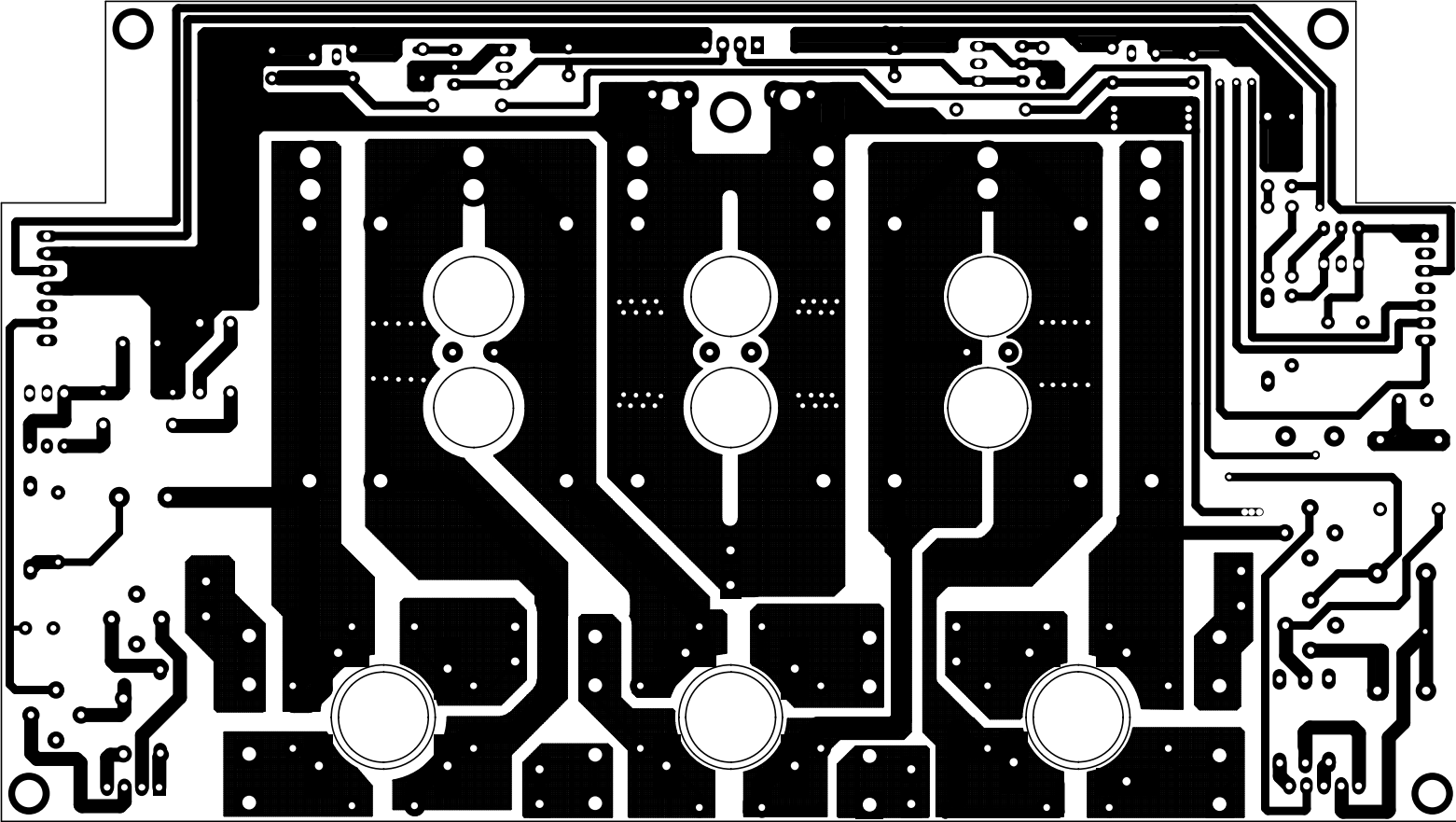
°	4mm	⌘	1.1mm	更改标记	更改单号	签 字	日 期	所 属 装 配 图 代 号	数 量				
	0.8mm	°	1.2mm	设 计				FPA-G12 LED		FPA-G12,LED,000,1			
	1.2mm	°	1.2mm	校 对						阶段标记	重量	比例	
				工 艺				Drill Drawing Layer					
				审 核									
▽	7.5mm	⌘	1.5mm	标 准								共 4 页	第 4 页
					旧底图登记号			底图登记号			第 页		



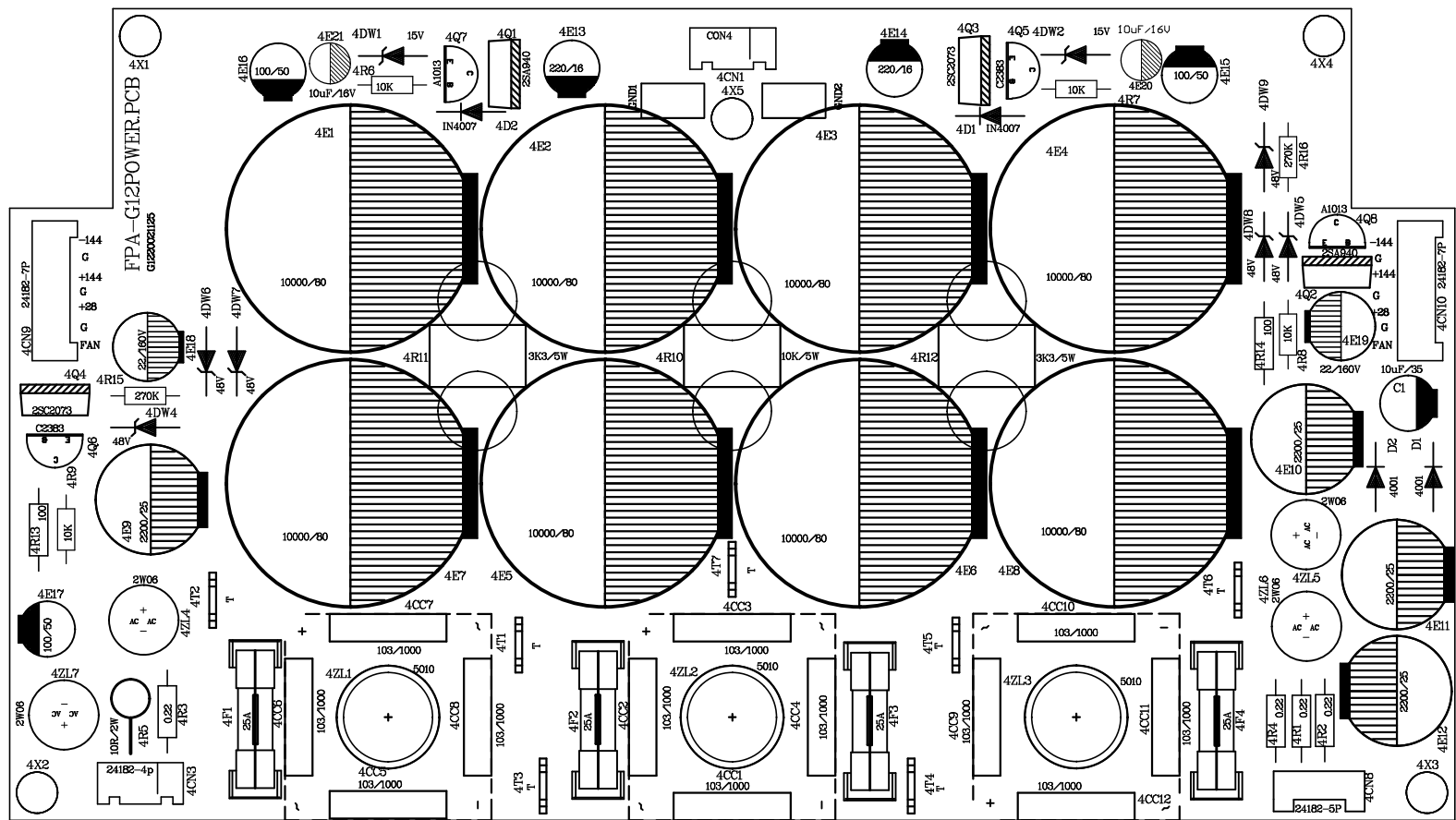
	4mm		1.1mm	更改标记	更改单号	签 字	日 期	所 属 装 配 图 代 号	数 量	FPA-G12,LED,000,1			
	0.8mm		1.2mm	设 计				FPA-G12 LED					
	1.2mm		1.2mm	校 对									阶段标记
	7.5mm		1.5mm	工 艺				Bottom Layer					
				审 核								共 4 页	
				标 准								第 3 页	
				批 准								第 3 页	
				旧底图登记号				底图登记号				第 3 页	



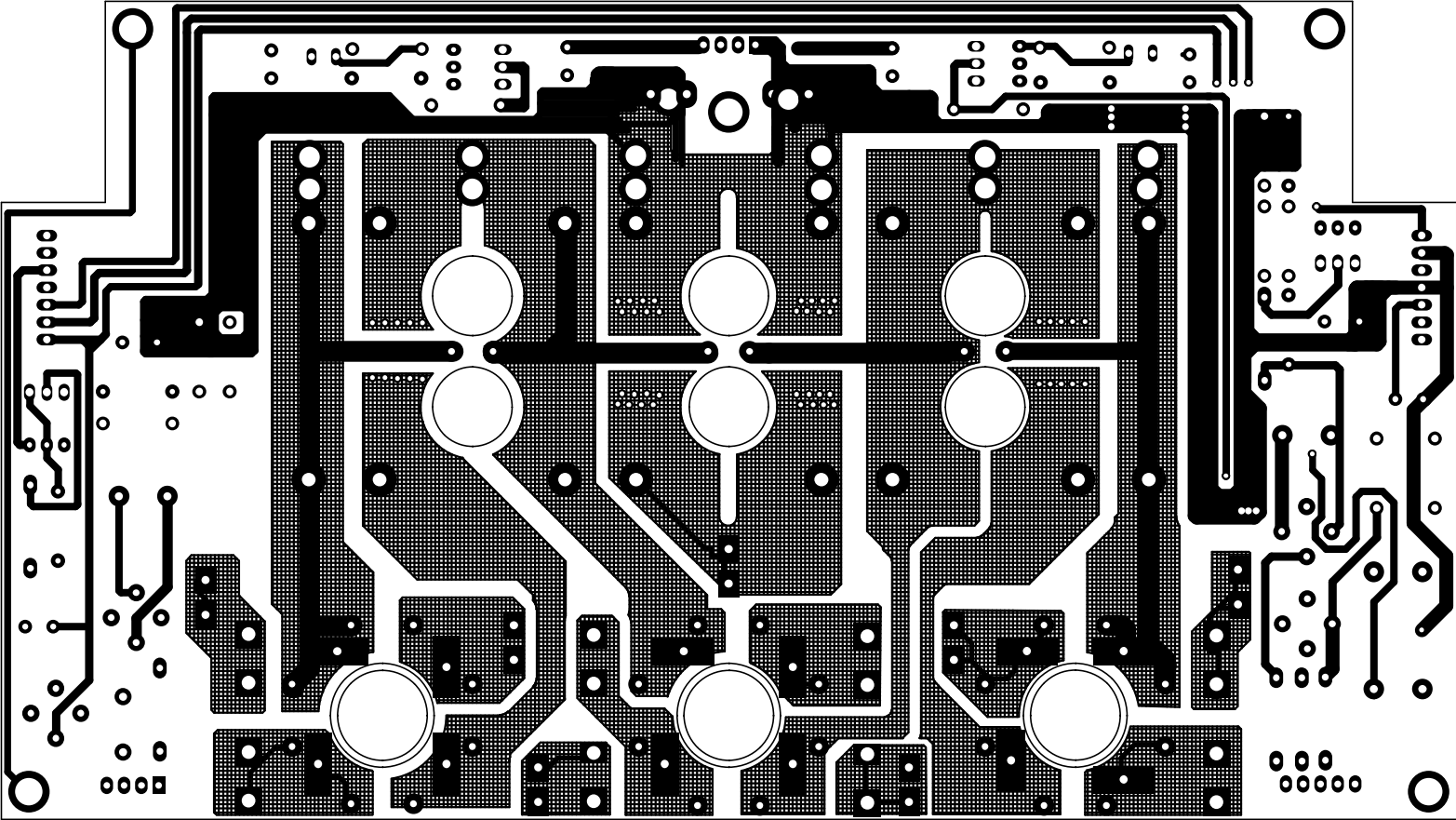
	11mm			更改标记	更改单号	签 字	日 期	所属装配图代号	数 量					
	▽	1.2mm	*	2mm	设 计			FPA—G12 POWER						
※	1mm	▽	1.2*7mm	校 对						Drill Drawing Layer		阶段标记		重量
※	1mm	*	2mm	工 艺										
	○	4mm		13mm	审 核									
标 准														
				批 准						共 4 页		第 4 页		
					旧底图登记号			底图登记号			第 页			



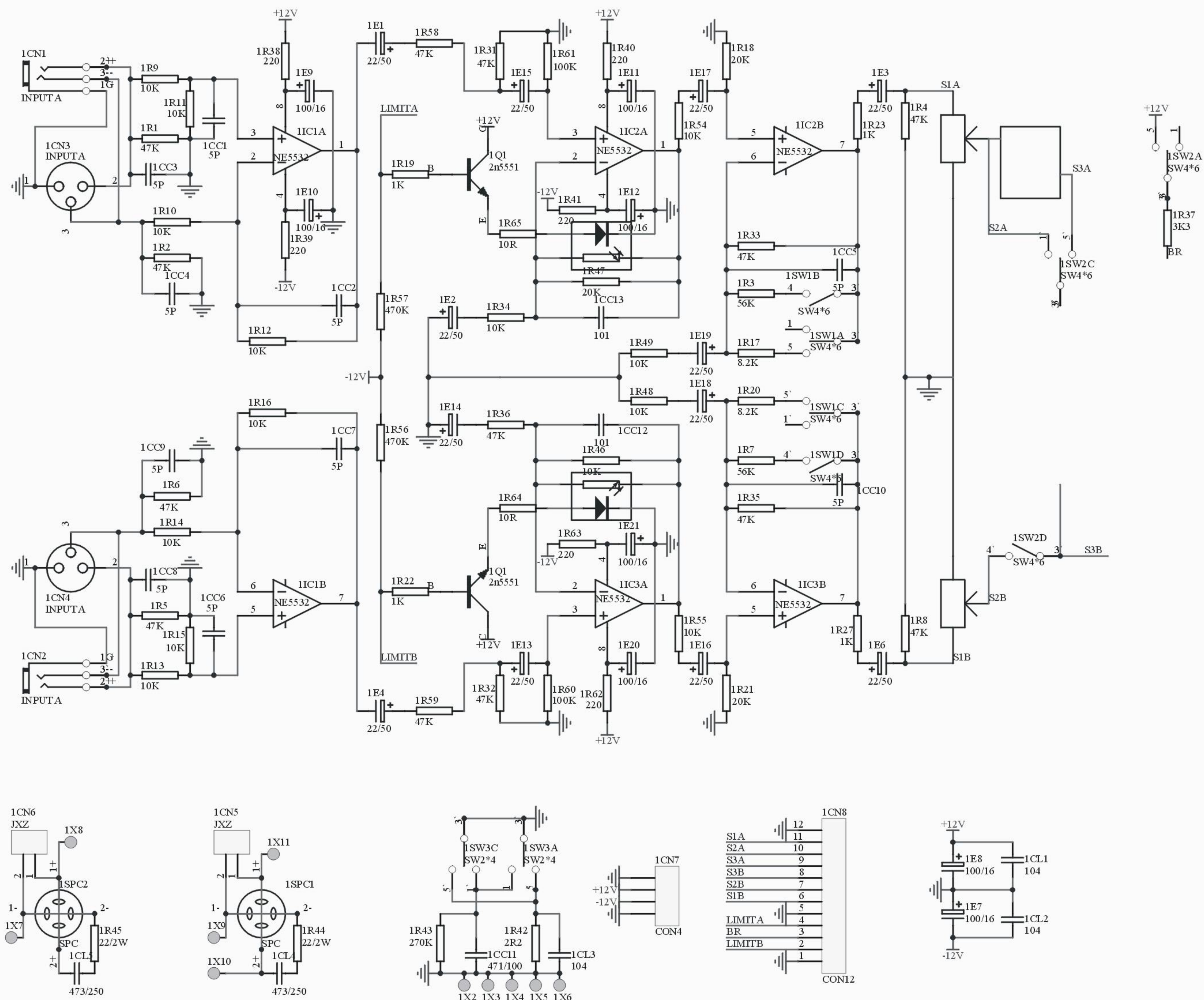
更改标记	更改单号	签 字	日 期	所属装配图代号	数 量			
设 计			2002.3/9	FPA-G12 POWER		FPA-G12,POWER,000,1		
校 对						阶段标记	重量	比例
工 艺				Bottom Layer				
审 核								
标 准								
批 准						共 4 页		第 3 页
旧底图登记号			底图登记号			第 页		

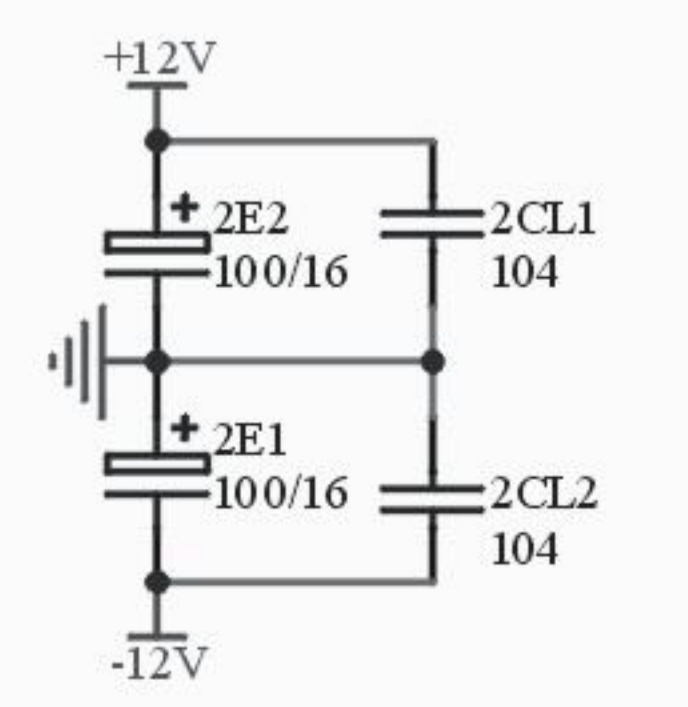
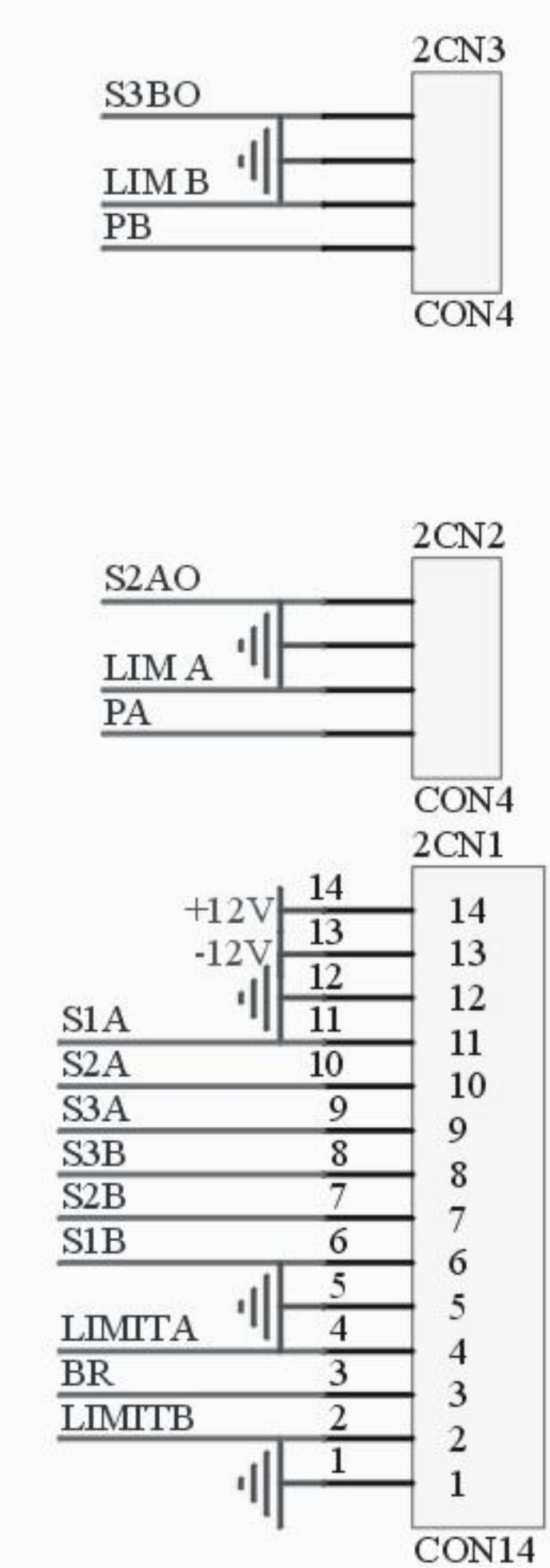
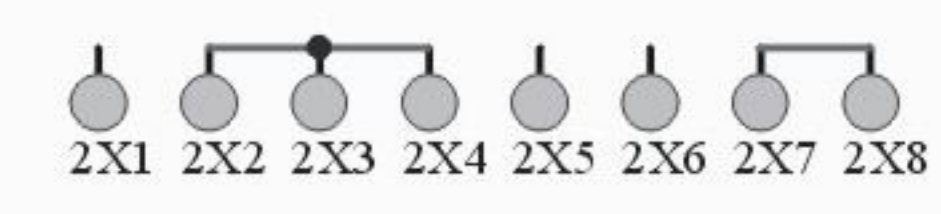
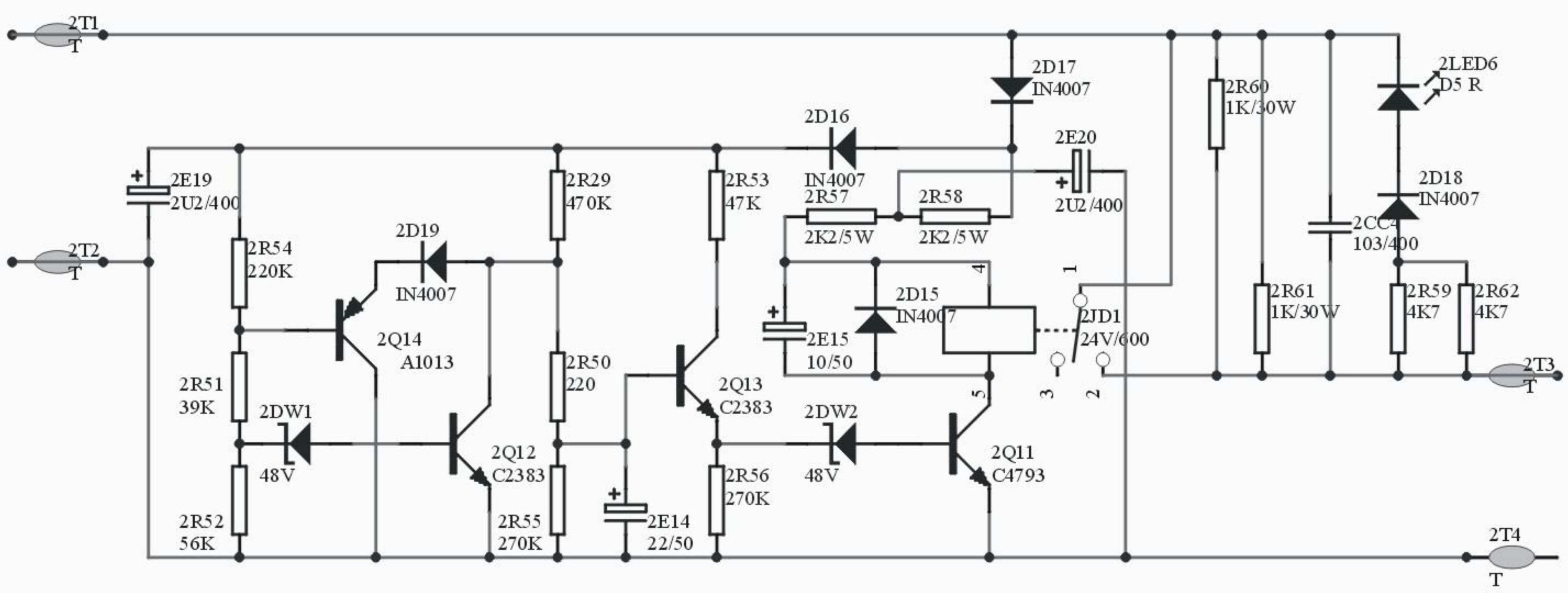
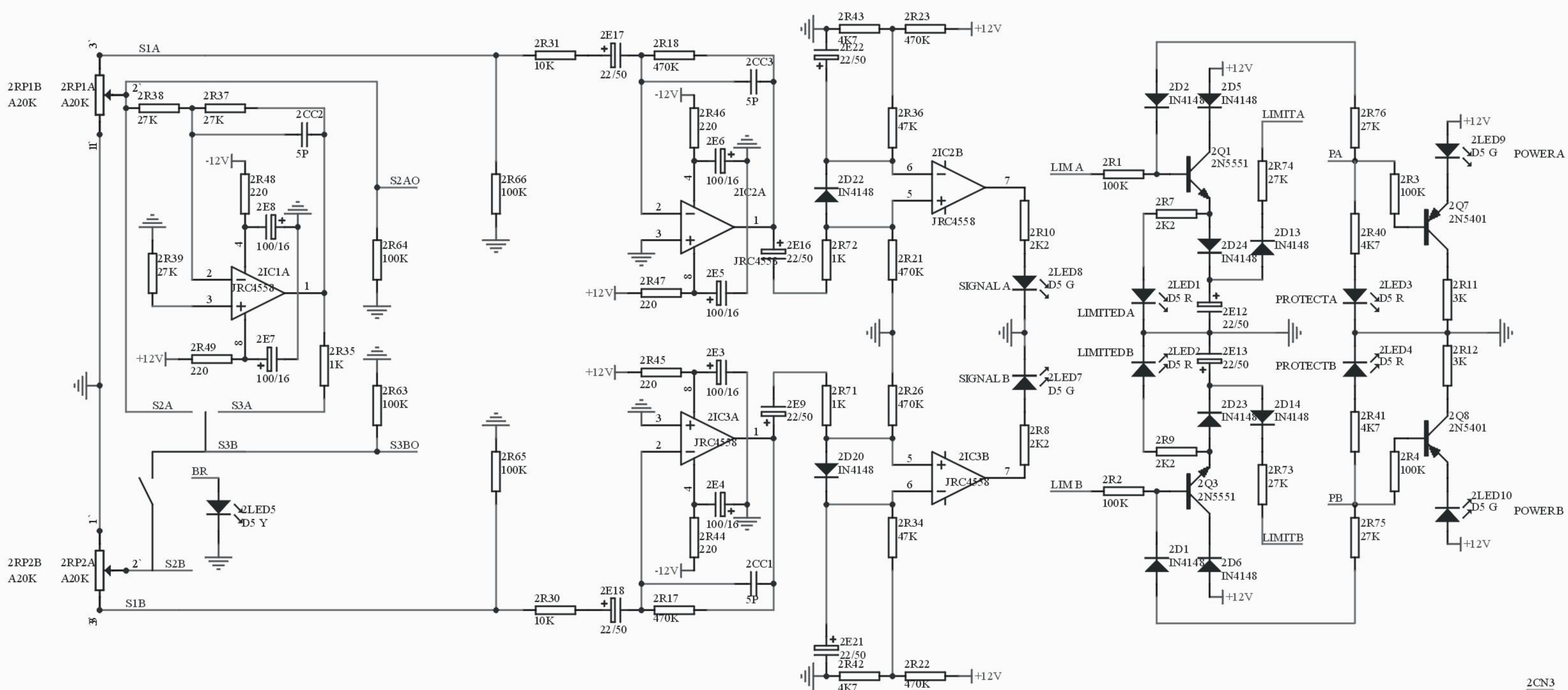


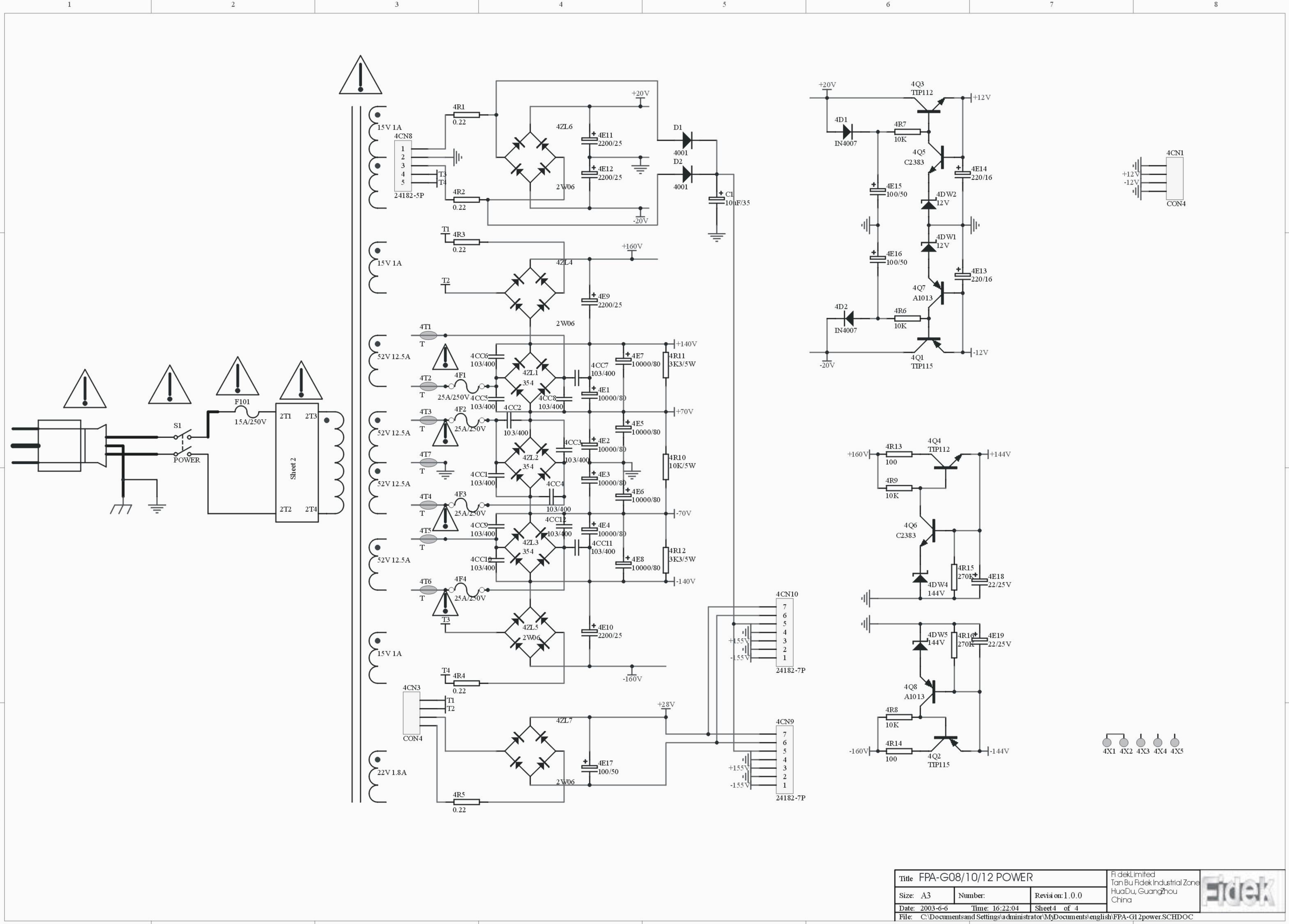
更改标记	更改单号	签 字	日 期	所属装配图代号	数 量			
设 计			2002.3/9	FPA-G12 POWER TopOver Layer		FPA-G12,POWER,000,1		
校 对						阶段标记	重量	比例
工 艺								
审 核								
标 准								
批 准						共 4 页		第 1 页
旧底图登记号			底图登记号			第 页		



更改标记	更改单号	签 字	日 期	所属装配图代号	数 量			
设 计			2002.3/9	FPA-G12 POWER		FPA-G12,POWER,000,1		
校 对						阶段标记	重量	比例
工 艺				Top Layer				
审 核								
标 准								
批 准						共 4 页		第 2 页
旧底图登记号				底图登记号			第 页	







Parts list

Product name: FPA-G12 Professional Amplifier

Production department: 001 Manufacturing Department

Unit: BOX

Specification:

No	Part Number	Description	Unit	Q'ty	Remark
1	0100252	Resistor metal oxide film 1/4w 10 Ω \pm 1%	PCS	2	
2	100256	Resistor metal oxide film 1/4w 47 Ω \pm 5%	PCS	8	
3	100263	Resistor metal oxide film 1/4w 100 Ω \pm 1%	PCS	18	
4	100271	Resistor metal oxide film 1/4w 220 Ω \pm 1%	PCS	17	
5	100283	Resistor metal oxide film 1/4w 820 Ω \pm 1%	PCS	2	
6	100292	Resistor metal oxide film 1/4w 100k Ω \pm 1%	PCS	14	
7	100294	Resistor metal oxide film 1/4w 10k Ω \pm 1%	PCS	37	
8	100298	Resistor metal oxide film 1/4w 150k Ω \pm 1%	PCS	4	
9	100304	Resistor metal oxide film 1/4w 1k Ω \pm 1%	PCS	5	
10	100307	Resistor metal oxide film 1/4w 2.2k Ω \pm 1%	PCS	16	
11	100308	Resistor metal oxide film 1/4w 2.4k Ω \pm 5%	PCS	2	
12	100313	Resistor metal oxide film 1/4w 20k Ω \pm 1%	PCS	8	
13	100314	Resistor metal oxide film 1/4w 220k Ω \pm 1%	PCS	1	
14	100319	Resistor metal oxide film 1/4w 270k Ω \pm 1%	PCS	20	
15	100320	Resistor metal oxide film 1/4w 27k Ω \pm 1%	PCS	7	
16	100322	Resistor metal oxide film 1/4w 3.3k Ω \pm 1%	PCS	5	
17	100327	Resistor metal oxide film 1/4w 33k Ω \pm 1%	PCS	6	
18	100334	Resistor metal oxide film 1/4w 4.7k Ω \pm 1%	PCS	8	
19	100338	Resistor metal oxide film 1/4w 43k Ω \pm 5%	PCS	2	
20	100339	Resistor metal oxide film 1/4w 470k Ω \pm 5%	PCS	11	
21	100340	Resistor metal oxide film 1/4w 47k Ω \pm 1%	PCS	21	
22	100331	Resistor metal oxide film 1/4w 39k Ω \pm 1%	PCS	1	
23	100349	Resistor metal oxide film 1/4w 56k Ω \pm 1%	PCS	11	
24	100355	Resistor metal oxide film 1/4w 68k Ω \pm 1%	PCS	2	
25	100362	Resistor metal oxide film 1/4w 8.2k Ω \pm 1%	PCS	2	
26	100475	Resistor metal oxide film 1/2w 150 Ω \pm 5%	PCS	4	
27	100683	Resistor metal oxide film 2w 10 Ω \pm 5%	PCS	4	

28	101031	Potentiometer 10k Ω PT-103S Vertical	PCS	4	
29	103101	Photo resistor LCR-0201	PCS	2	
30	104006	Resistor, Wire wound 5W 3.3k Ω \pm 5% Radial	PCS	2	
31	104007	Resistor, Wire wound 30W 1k Ω \pm 5% Axial	PCS	2	
32	104063	Resistor, Wire wound 5w 0.15 Ω \pm 5% Axial	PCS	16	
33	104066	Resistor, Wire wound 5w 0.22 Ω \pm 5% Axial	PCS	32	
34	104114	Resistor, Wire wound 5W 10k Ω \pm 5% Radial	PCS	1	
35	104115	Resistor, Wire wound 5W 2.2k Ω 5% Axial	PCS	2	
36	105319	Resistor carbon film 1/4w 2.2 Ω \pm 5%	PCS	1	
37	105338	Resistor carbon film 1/4w 75 Ω \pm 5%	PCS	4	
38	105383	Resistor carbon film 1/4w 1k Ω \pm 5%	PCS	6	
39	105540	Resistor carbon film 1/2w 2.2 Ω \pm 5%	PCS	48	
40	105550	Resistor carbon film 1/2w 100 Ω \pm 5%	PCS	2	
41	105673	Resistor carbon film 1w 10 Ω \pm 5%	PCS	10	
42	105680	Resistor carbon film 1w 100 Ω \pm 5%	PCS	2	
43	105799	Resistor carbon film 2w 10 Ω \pm 5%	PCS	2	
44	107010	Resistor metal oxide film 2w 10 Ω \pm 5%	PCS	3	
45	107085	Resistor metal oxide film 1/2w 0.22 Ω \pm 5%	PCS	4	
46	202180	Potentiometer - rotary RV16GH241PL-A20K-20K2-B	PCS	2	
47	300021	Electrolytic capacitor 16V 100uF \pm 20% Dia6x11.5	PCS	8	
48	300022	Electrolytic capacitor 16V 220uF \pm 20% Dia6.5x11.5	PCS	2	
49	300030	Electrolytic capacitor 16V 100uF \pm 20% Dia5x9	PCS	8	
50	300064	Electrolytic capacitor 25V 2200uF \pm 20% Dia16x25 H<25	PCS	4	
51	300071	Electrolytic capacitor 400V 2.2uF \pm 20%	PCS	2	
52	300088	Electrolytic capacitor 35V 10uF \pm 20% Dia8	PCS	1	
53	300094	Electrolytic capacitor 35V 220uF \pm 20% Dia10x16	PCS	4	
54	300166	Electrolytic capacitor 50V 10uF \pm 20% Dia5x11	PCS	1	
55	300168	Electrolytic capacitor 50V 22uF \pm 20% Dia5x11.5	PCS	23	
56	300172	Electrolytic capacitor 50V 100uF \pm 20% Dia8x12.5	PCS	3	
57	300237	Electrolytic capacitor 80V 10000uF \pm 20% Dia35.2x50	PCS	8	
58	300288	Electrolytic capacitor 160V 22uF \pm 20% Dia10x17.5	PCS	6	
59	301104	Metalized polyester capacitor 50V 0.1uF \pm 5%	PCS	2	
60	301161	Metalized polyester capacitor 100V 0.01uF \pm 5%	PCS	6	
61	301179	Metalized polyester capacitor 100V 0.1uF \pm 5%	PCS	18	

62	301213	Metalized polyester capacitor 100V 1500pF±5%	PCS	4	
63	301245	Metalized polyester capacitor 250V 0.1uF±5%	PCS	8	
64	305011	Ceramic capacitor 50V 5pF±10%	PCS	4	
65	305020	Ceramic capacitor 50V 30pF±10%	PCS	15	
66	305123	Ceramic capacitor 400VAC 0.01uF +80-20% CCEE	PCS	1	
67	305314	Ceramic capacitor 1kV 470pF ±10%	PCS	4	
68	305417	Ceramic capacitor 100V 150pF ±5%	PCS	4	
69	305418	Ceramic capacitor 100V 47pF ±5%	PCS	4	
70	305475	Ceramic capacitor 1kV 25pF±10%	PCS	4	
71	305483	Ceramic capacitor 1000V 0.01uF ±20%	PCS	16	
72	307136	Electrolytic Capacitor, non-polarized 16V 220uF±20%Dia10x13	PCS	4	
73	40084	Inductor - Air coil 18uH±20% Dia, 1.5mm n=15	PCS	2	
74	5008	IC PC817 (PHOTO COUPLER)	PCS	4	
75	5009	IC JRC-082D DIP	PCS	3	
76	5107	IC NJM4558D	PCS	3	
77	6006	Diode-LED red Dia. 5mm diffuse	PCS	2	
78	6007	Diode -LED red Dia. 5mm diffuse, auto-flash	PCS	2	
79	6027	Diode-LED, green Dia. 5mm diffuse	PCS	2	
80	6035	Diode-LED, blue Dia. 5mm water clear	PCS	3	
81	6043	Diode-LED, yellow Dia. 5mm diffuse	PCS	1	
82	6057	Diode fast recover SF24	PCS	4	
83	6216	Bridge rectifier 2W06M 600V 2A round	PCS	4	
84	6210	Bridge rectifier KBPC5010 1000V 50A	PCS	3	
85	6428	Diode -zener 1N4733 1W 5.1V	PCS	8	
86	6409	Diode -zener 1/2W 5.1V	PCS	2	
87	6418	Diode -zener 1N4739 1/2W 12V	PCS	2	
88	6432	Diode -zener 1W 15V	PCS	2	
89	6452	Diode -zener 1/2W 48V	PCS	2	
90	6606	Diode 6A10	PCS	4	
91	6609	Diode -rectifier 1N4001	PCS	2	
92	6613	Diode -rectifier 1N4007B	PCS	21	
93	6617	Diode -switching 1N4148	PCS	42	
94	7004	Transistor 2SA1013 R	PCS	2	
95	7042	Transistor 2SA1943 0 150W TOSHIBA	PCS	28	

96	7046	Transistor 2SC2073 25W	PCS	2	
97	7053	Transistor 2SC2240 GR	PCS	10	
98	7056	Transistor 2SC2383 Y	PCS	8	
99	7076	Transistor MJE340	PCS	11	
100	7078	Transistor KSE350	PCS	10	
101	7092	Transistor 2SC5200 150W O TOSHIBA	PCS	28	
102	7095	Transistor 2N5401	PCS	2	
103	7097	Transistor 2N5551	PCS	12	
104	7124	Transistor 2SA940 25W	PCS	2	
105	7129	Transistor 2SA970 BL	PCS	10	
106	7151	Transistor A1013 O	PCS	3	
107	7154	Transistor 2SA1480 7W	PCS	2	
108	90077	Slide switch SS-23E01 (2P2T) L=15mm	PCS	1	
109	90076	Slide switch SS-23E01(2P3T) L=15mm	PCS	2	
110	90148	temperature switch B955C	PCS	2	
111	90150	Thermal switch, 62 degree C, Normal open	PCS	2	
112	90171	AC power switch rocket type kcd4 16A/250V BLACK CCEE	PCS	1	
113	10000	Relay SLA-12VDC-SL-C SONGLE	PCS	2	
114	10029	Relay SLA-24VDC-SL-C SONGLE	PCS	1	
115	11211	Transformer 220V FPA-G12	PCS	1	
116	13054	Fuse 250V T15A Dia6x30	PCS	3	
117	13077	Fuse 250V T25A Dia5x20	PCS	4	
118	1400094-1	Printed circuit board FPA-G12 INFPA-G12,IN,000,2	PCS	1	
119	1400095-1	Printed circuit board FPA-G12 AMPFPA-G12,AMP,000,2	PCS	2	
120	1400096-1	Printed circuit boardFPA-G12POWERFPA-G12,POWER,000,2	PCS	1	
121	1400097-1	Printed circuit boardFPA-G12 LEDFPA-G12,LED,000,2	PCS	1	
122	1801185	SIP cable socket 24182 4Px200mm black	PCS	1	
123	1801186	SIP cable socket 24182 7Px150mm black	PCS	2	
124	1802091	SIP shielded cable socket 24182H 14Px550mm	PCS	1	
125	1802092	SIP shielded cable socket 24182H 4Px200mm	PCS	2	
126	1803219	SIP cable L6.2-6P (female socket) 14# L=120mm	PCS	2	
127	1803220	SIP Cable with 6.3mm terminal 14# L=550mm red	PCS	2	
128	1803221	SIP cable with 6.3mm terminal 14# L=100mm red	PCS	2	
129	1803222	SIP cable with 6.3mm terminal 14# L=100mm black	PCS	2	

130	1801207	SIP colour cable socket 24182H 2Px50mm	PCS	2	
131	1805030	Single wire one end plug L6.2-6P male, twin terminal 14# red black L=20-30cm	PCS	1	
132	1805031	Single wire one end plug L6.2-6P male, twin terminal 14# red black L=30-20cm	PCS	1	
133	1805032	SIP cable socket Dia3.2 16# L=120mm Green line yellow body.	PCS	2	
134	1806005	AC power cord LY-13, 14/ 3C UL	PCS	1	
135	1808266	Single wire both end plug , 6.3mm terminal 14#L=55mm red	PCS	2	
136	23004	Contact plate 6.3mm	PCS	15	
137	24003	Fuse hold FC-001D	PCS	8	
138	24004	Fuse hold R3-9 15A/250V	PCS	1	
139	260026	Glue BY-883	g	0,5	
140	260045	Glue 4505 yellow	g	3	
141	260046	Glue 1600HB black	g	5	
142	263001	Solder bar H-63A	g	35	
143	263002-1	Solder wire H50xDia1.2	g	10	
144	264001	Hot melt tube	Kg	5	
145	264003	Thermal paste	g	10	
146	267064	Water soluble flux B102 YILIDA	g	30	
147	267065	Solvent type B YILIDA	g	10	
148	267066	Cleaning solvent 288B YILIDA	g	10	
149	268010	Packing tape 60mm x 50mm		1,5	
150	268018	Double side coating 6mm	m	0,5	
151	28012	Mica plate 28x22mm	PCS	56	
152	28900	Heat transfer fabric 18mm x 13mm	PCS	2	
153	300101	Screw PWM 3x10 steel half found washer head black nickel harden	PCS	4	
154	300118	Screw PWM 3x16 steel half found washer head black nickel harden	PCS	58	
155	300161	Screw PWM 3x6 steel half found washer head black nickel harden	PCS	41	
156	300182	Screw PT 3x8 self taping half found washer head black nickel harden	PCS	4	
157	300190	Screw PWT 3x8 self taping washer head black nickel harden	PCS	8	
158	300263	Screw PWM 4x12 steel half found washer head black nickel harden	PCS	4	
159	300291	Screw PWM 4x20 steel half found washer head black nickel harden	PCS	8	
160	300304	Screw PWM 4x30 steel half found washer head black nickel harden	PCS	3	
161	300337	Screw PWM 4x8 steel half found washer head black nickel harden	PCS	49	
162	310011	Nut M3	PCS	4	
163	310013	Nut M4	PCS	11	

164	33039	Brass post FPA-20A	PCS	4	
165	33041	LENS FPA-G12	PCS	1	
166	33033	Brass post M3x12mm	PCS	8	
167	33043	Brass post FPA-G12,11,008,0 L=20	PCS	5	
168	33044	Brass post FPA-G12,11,008,0 L=25	PCS	5	
169	3501201	Knob FPA-G02,11,010,0	PCS	2	
170	3600106-1	Bass unit FPA-G12,11,001,0	PCS	1	
171	3602073	Top panel FPA-G12,11,002,0	PCS	1	
172	3603311-2	Rear panel FPA-G12	PCS	1	
173	3605030	Front panel FPA-G12	PCS	1	
174	3605211	Left panel FPA-G12	PCS	1	
175	3605213	Right panel FPA-G12	PCS	1	
176	370105	Small heat sink 17x11x25	PCS	4	
177	370107	Heat sink FPA-G12	PCS	2	
178	43000	Heat shrinkable tube Dia. 1.5mm, black	m	0,03	
179	43004	Heat shrinkable tube Dia. 5mm, black	m	0,03	
180	43007	Heat shrinkable tube Dia. 30mm, black	m	0,05	
181	43009	Heat shrinkable tube Dia. 15mm, black	m	0,05	
182	450009	Feet Dia25x12	PCS	4	
183	480013	Spring washer Dia3mm steel, black nickel	PCS	62	
184	480016	Spring washer Dia. 4mm steel, black zinc GB95-85-4	PCS	11	
185	480122	Gasket Dia3mm	PCS	62	
186	480124	Gasket Dia4mm	PCS	11	
187	500140	Thermal switch bracket FPA-1000	PCS	2	
188	500266	Cooling fan grille 120x120mm	PCS	2	
189	5102004	Socket - Cannon male 2005 J4PD	PCS	2	
190	5102308	Socket - Cannon female FMX-12ST	PCS	2	
191	5104001	MIC socket 6.3UNIT ELECTRONIC	PCS	2	
192	52002	Cable tie CZ-100mm	PCS	30	
193	52064	Strain relief 7N-2	PCS	1	
194	59019	Speaker grille - woolen 420x62x3mm	PCS	1	
195	59020	Speaker grille - woolen 180x65x3mm	PCS	1	
196	61035	Terminal 5007 ZJX-Z Nickel,Gold	PCS	2	
197	6404301	Label QC PASS 01	PCS	2	

198	6404302	Label QC PASS 02	PCS	1	
199	6404303	Label QC PASS 03	PCS	1	
200	9400292-2	Box FPA-G12,90,001,2 K A	PCS	1	
201	9501097	Polyfoam - corner FPA-20	PCS	2	
202	970125	PE bag 180mm x 270mm x 0.03mm	PCS	1	
203	970246	PE bag 600mm x 700mm x 0.04mm	PCS	1	
204	970390	PE bag 50mm x 75mm	PCS	1	
205	980169-1	User's manual FPA-G12-1	PCS	1	
206	99200	Desiccant 5g	PCS	1	
207	99049	Warranty card FD Chinese-English (new edition)	PCS	1	
208	99113	Pass certificate FD (New edition)	PCS	1	
209	10317	Fan RDM1238P 120mm x 120mm x 38mm	PCS	2	
210	6455	Diode -zener 1W 47V	PCS	10	
211	100317	Resistor metal oxide film 1/4w 24k Ω \pm 1%	PCS	2	

Remark :

Design

Process

Confirm

Approval :

Fidek

FPA-G12 **SERVICE MANUAL**

Fidek

INDEX

Technical parameter 2

Disassembly instruction 3

Principle chart 7

PCB board 8

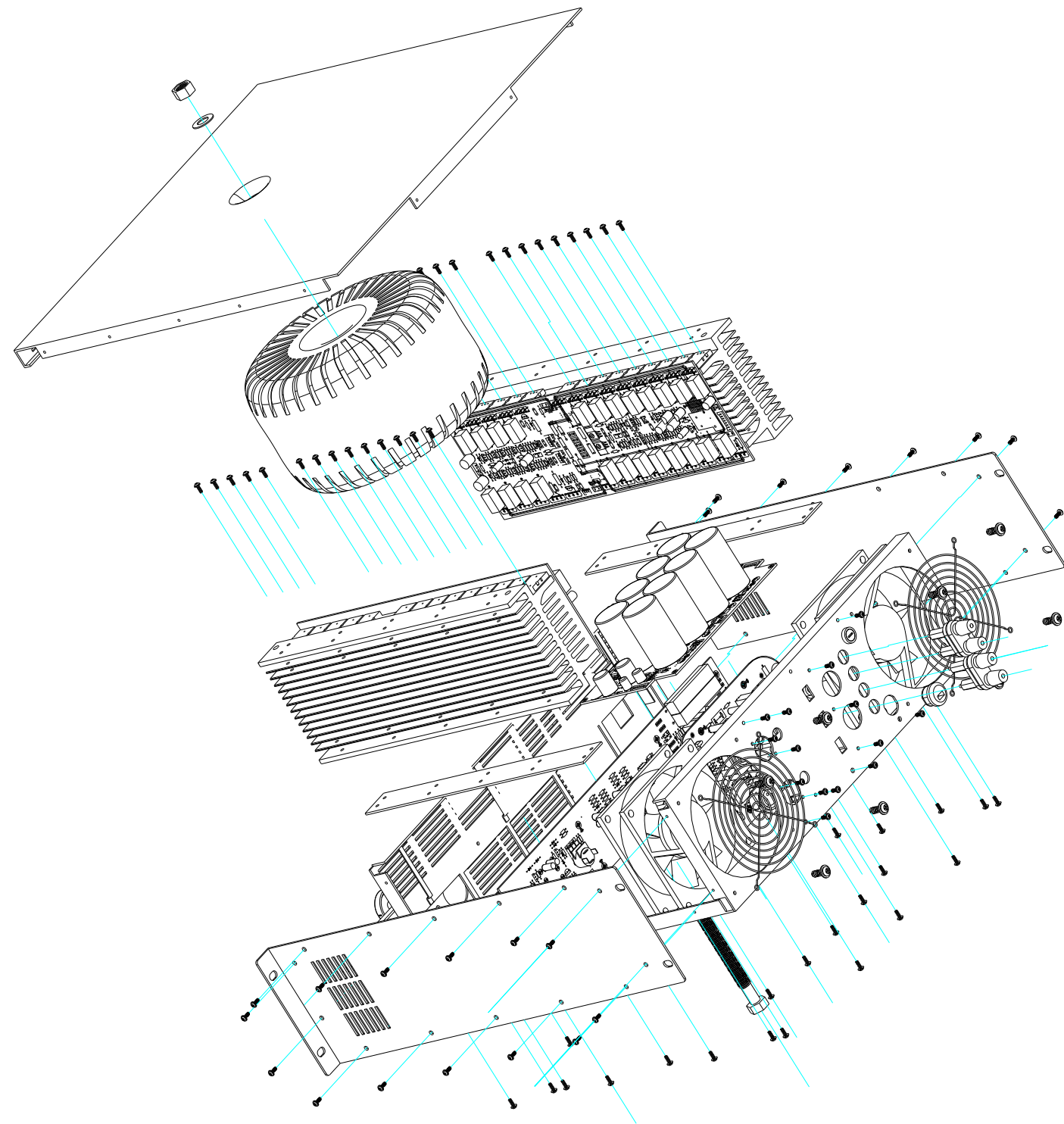
General chart 9

BOM 10

BOM

Mode: FPA-G12			
Type	Code	Description	Usage
	11530-1	transformer FPA-G12A, BT, 230, 1	1
	05008	IC PC817 (PHOTO COUPLER)	2
	07042	transistor 2SA1943 0 150W TOSHIBA	14
	07092	transistor 2SC5200 150W 0 TOSHIBA	14
	090148	thermal switch B955C	1
	090151	thermal switch KSD301 250V 5A 60 degree ordinary on	1
	10000	relay SLA-12VDC-SL-C SONGLE	2
	0202180	potentiometer rotary RV16GH241PL-A20K-20K2-B	2
	06035	Diode blue light LED Dia5 milky clear body beam	3
	0300237	capacitor electrolytic 80V 10000uF±20% Dia35x60	8
	05182	IC KA7815	1
	05193	IC LM7915	1
		other material	

GENERAL CHART



TECHNICAL PARAMETER

Item	FPAG12	Test condition
Output power	1200W/CH 8 Ω	8 Ω 1KHz
	1600W/CH4 Ω	4 Ω 1KHz
	2500W	8 Ω 1KHz(BRIDGE)
S/N ratio	>100dB	
Residual noise	<70dB	
Consumption power	200W	Unloaded
	1400W	Musical
	2800W	Full loaded
Fuse	T15A	~220V 50Hz
Weight	N.W.:40Kg	
	G.W.:42Kg	
frequency response	20Hz~20KHz ±0.5dB	
Input impedance	10K Ω	Unbalance input, one terminal to the ground
	20K Ω	Balance input
Separation	>60dB	1KHz
	>50dB	10KHz
Max input level	+18dBu	
Distortion	<0.01%	
Slew rate	40V/us	
Damping coefficient	>400	8 Ω 1KHz stereo, dual channel mode
Instruction	Red limited tamp, green power tamp, green signal tamp, red safety tamp, yellow bridged tamp stereo indicator , red power over voltage low voltage indicator.	
Dimension	132(H)×483(W)×435(D)mm	

DISASSEMBLY INSTRUCTION

Study the cords layout carefully before any takedown. Set them as original after servicing.

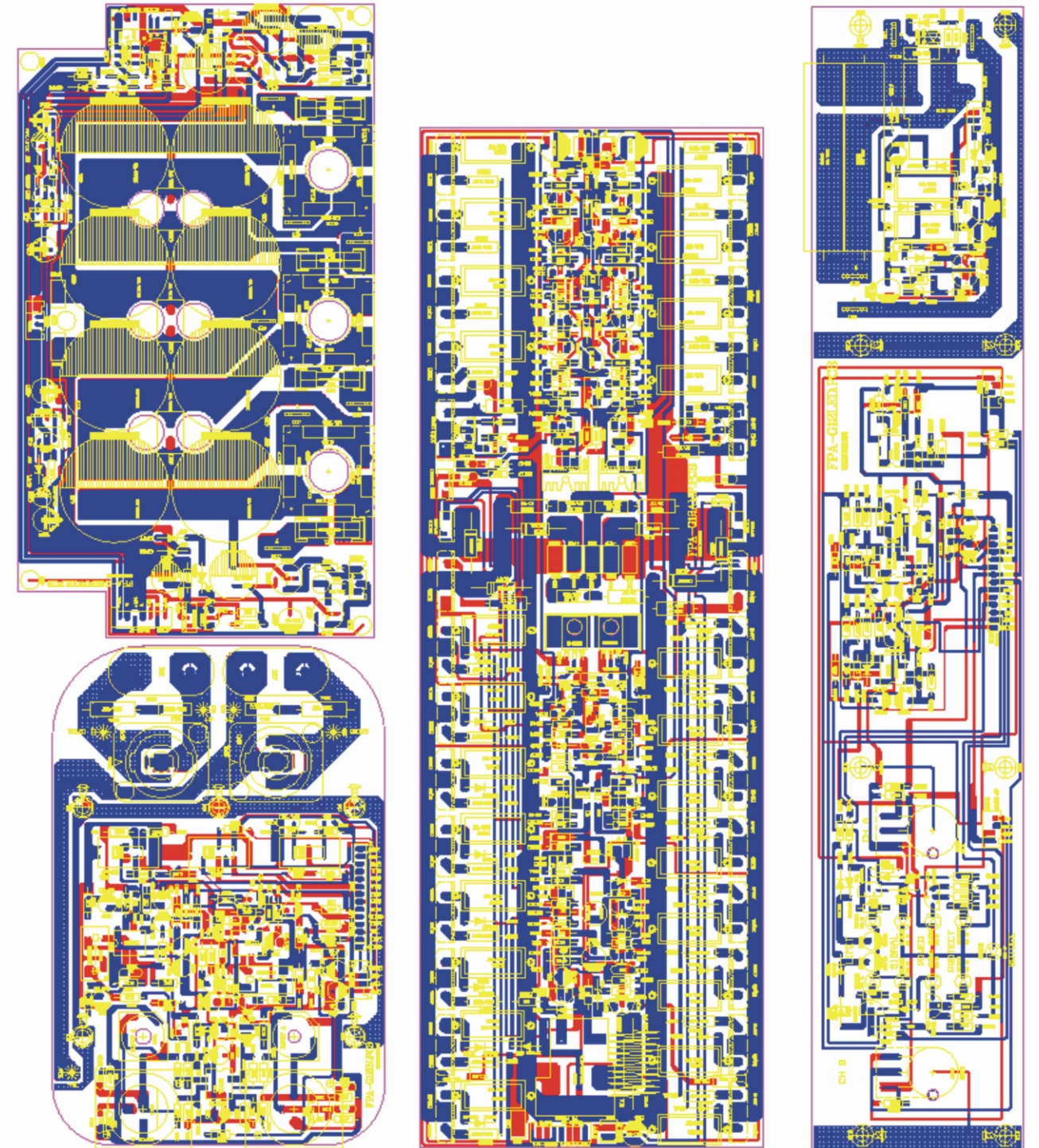
Disassemble power amplifier PCB:

- First, disassemble 3 screws on the panel and 10 screws on the side move top panel;
- Disassemble 4 screws A (fig1) on the left side of base unit;
- Unplug the connection terminal B (fig2) connection with left amplifier PCB;
- Move amplifier PCB . (So dose right amplifier PCB.)

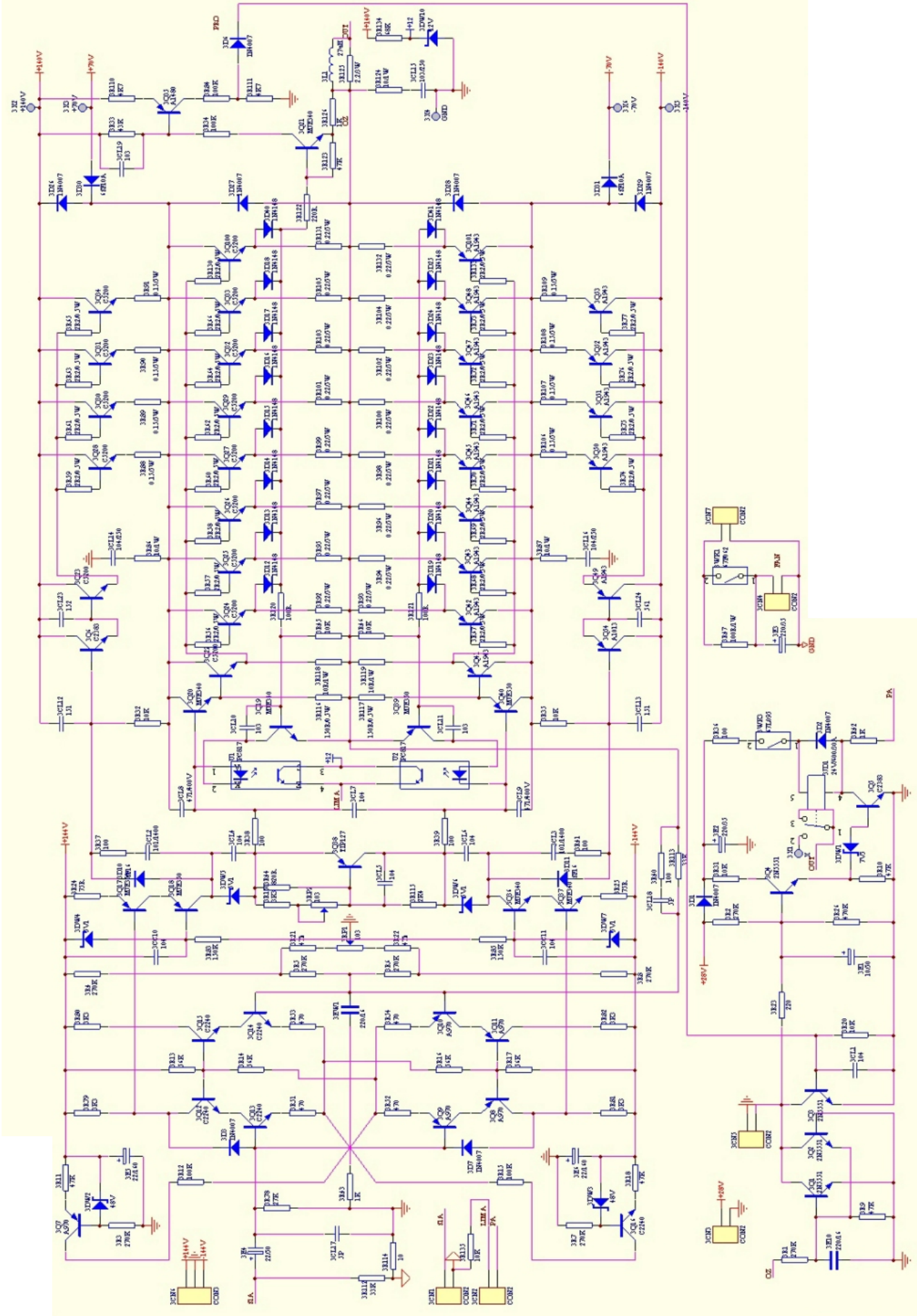


Fig 1

PCB BOARD



PRINCIPLE CHART



B

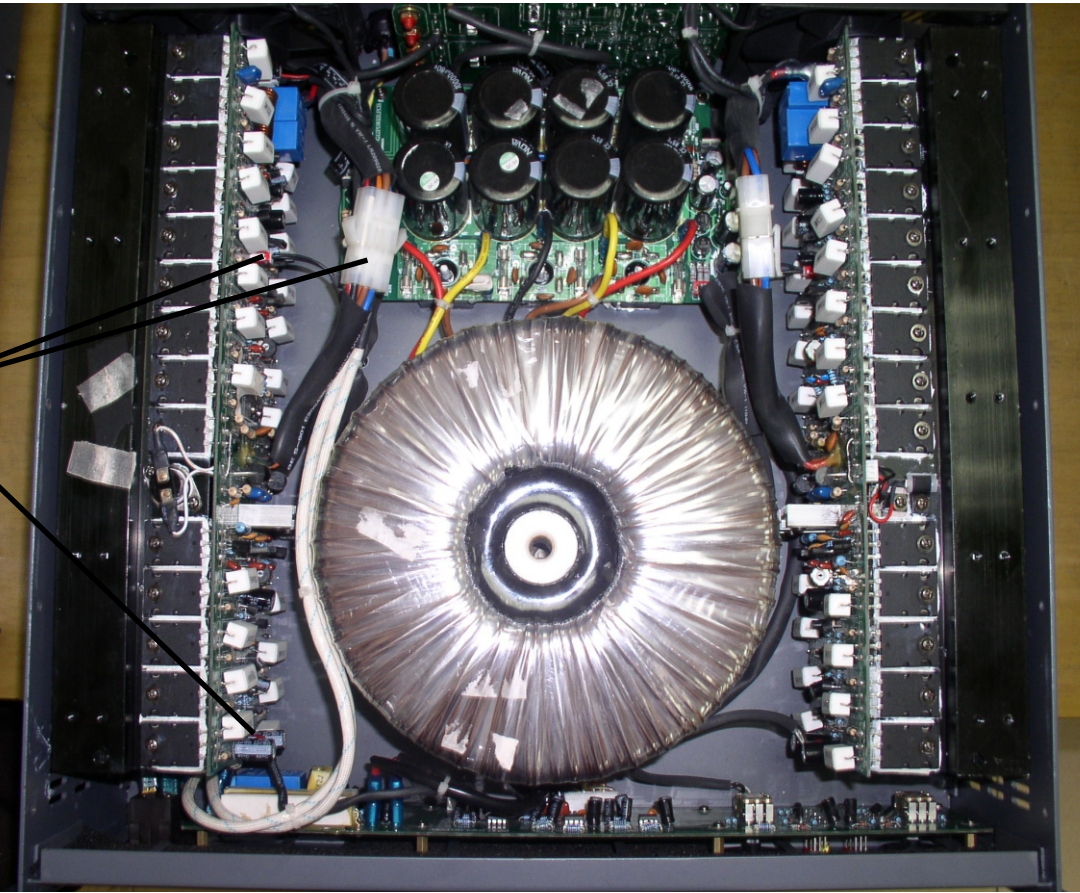
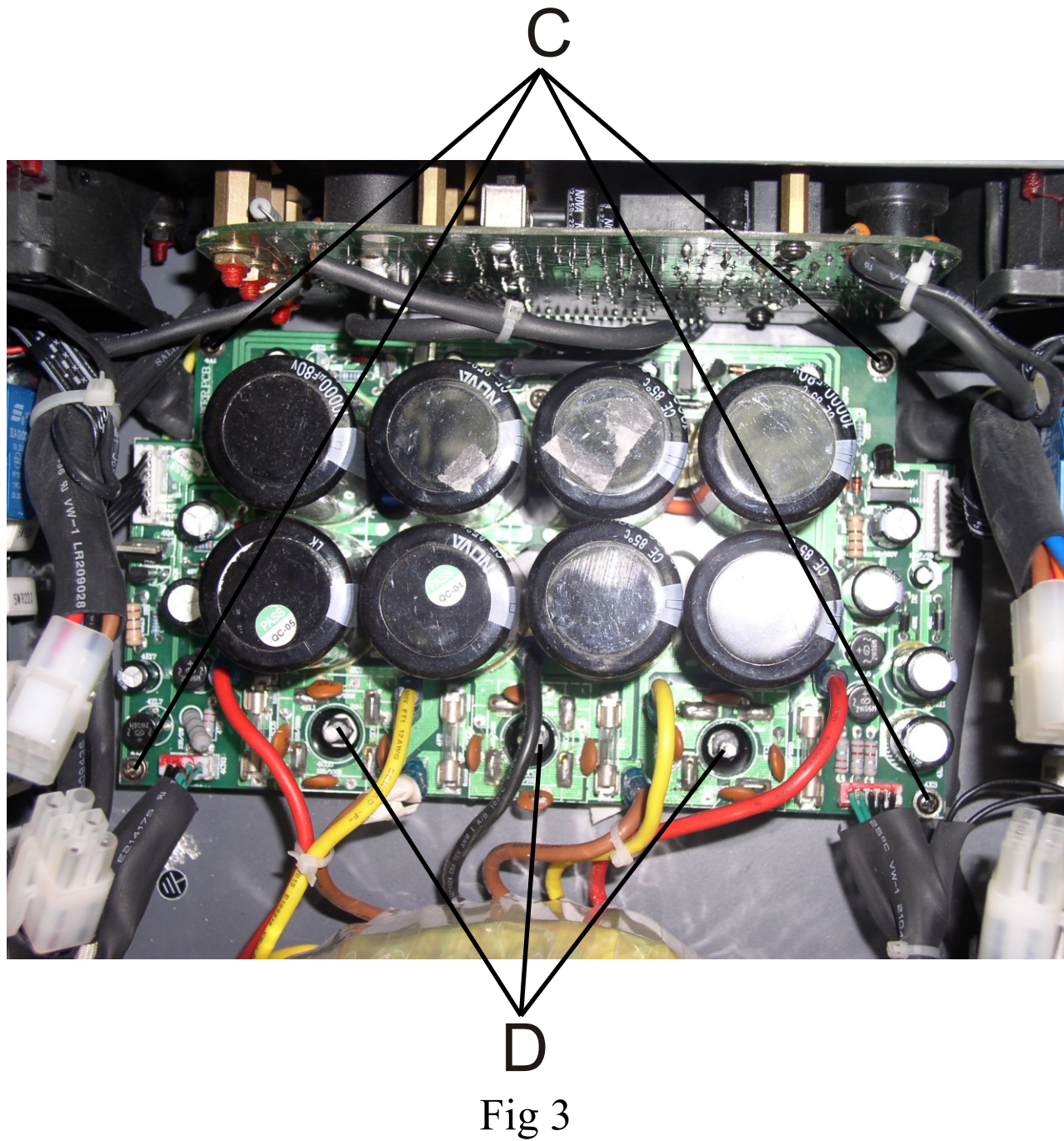


Fig 2



Disassemble power PCB:

- Disassemble 4 screws C;
- Disassemble 3 nuts with sleeve;
- Unplug relevant connection terminal;
- Move power board.

Disassemble display PCB:

- Disassemble 4 screws from two sides of front panel and 4 screws on the bottom of front panel;
- Put front panel aside and then unplug connection terminal;
- disassemble 8 screws E on the PCB;
- move display PCB.

