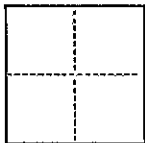


## CORNER RECORD

CR115

(PROJECTED)

COUNTY OF ALAMEDA T. 1S R. 3W MT. DIABLO MERIDIAN CALIFORNIACORNER TYPE: GOV'T. CORNER ☐ MEANDER ☐ RANCHO ☐ CONTROL ☐ OTHER ☒CORNER IDENTIFICATION — DATE OF VISIT DECEMBER 23, 19 91CORNER — LEFT AS FOUND ☐ FOUND AND TAGGED ☐ REESTABLISHED OBLITERATED CORNER ☐ REBUILT ☐

PHYSICAL DESCRIPTION OF CORNER FOUND; EVIDENCE AND METHOD USED TO IDENTIFY OR REESTABLISH

⊙ FOUND CONCRETE MONUMENT PER 14 M 24

PHYSICAL DESCRIPTION OF MONUMENTS REBUILT OR PERPETUATED

○ SET 5/8" REBAR &amp; CAP LS 5182

+ SET CROSS SIDEWALK

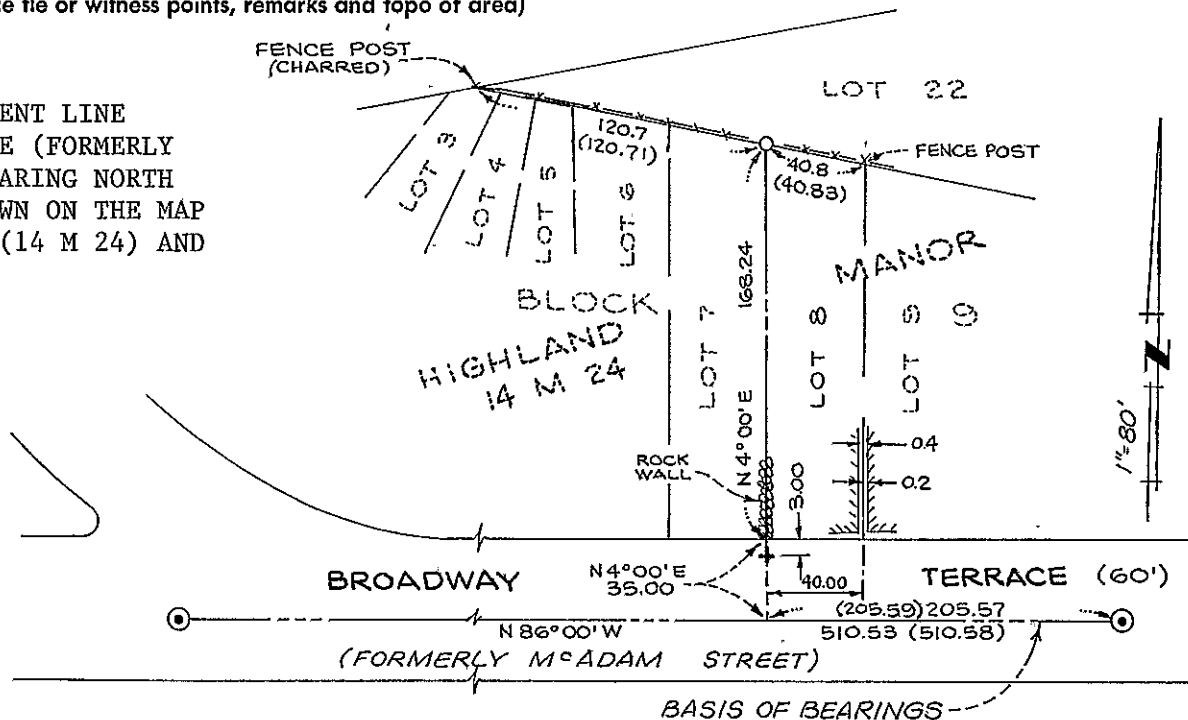
CALIFORNIA COORDINATE SYSTEM ORDER: FIRST ☐ SECOND ☐ THIRD ☐  
 STATIONS USED: NGS (USC & GS) ☐ STATE ☐ COUNTY ☐ OTHER ☐ STATION \_\_\_\_\_ STATION \_\_\_\_\_  
 ZONE \_\_\_\_\_ ELEVATION \_\_\_\_\_ NORTHINGS (Y) \_\_\_\_\_ EASTINGS (X) \_\_\_\_\_

(Fold)

SKETCH: (Include reference tie or witness points, remarks and topo of area)

## BASIS OF BEARINGS

TAKEN ON THE MONUMENT LINE  
 OF BROADWAY TERRACE (FORMERLY  
 MC ADAM STREET) BEARING NORTH  
 86°00' WEST AS SHOWN ON THE MAP  
 OF HIGHLAND MANOR (14 M 24) AND  
 AS SHOWN HEREON.



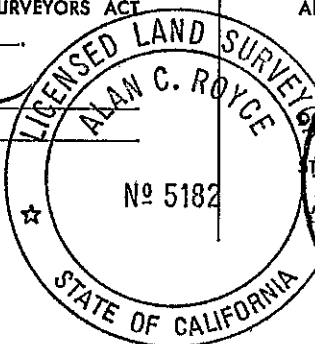
## SURVEYOR'S CERTIFICATE

THIS CORNER RECORD WAS PREPARED BY ME OR UNDER MY  
 DIRECTION IN CONFORMANCE WITH THE LAND SURVEYORS ACT  
 ON DECEMBER 23 19 91.

SIGNED: Alan C. Royce

L.S. or R.C.E. No.: L.S. 5182  
 LICENSE EXPIRES 6-30-95

SEAL



## COUNTY SURVEYOR'S CERTIFICATE

THE CORNER RECORD WAS RECEIVED 3/26/92  
 AND EXAMINED AND FILED 3/26/92

DEPUTY COUNTY SURVEYOR

STATEMENT ON BACK OF SHEET  
 L86728

YES ☐ NO ☒

BK 2 C.R PG 07