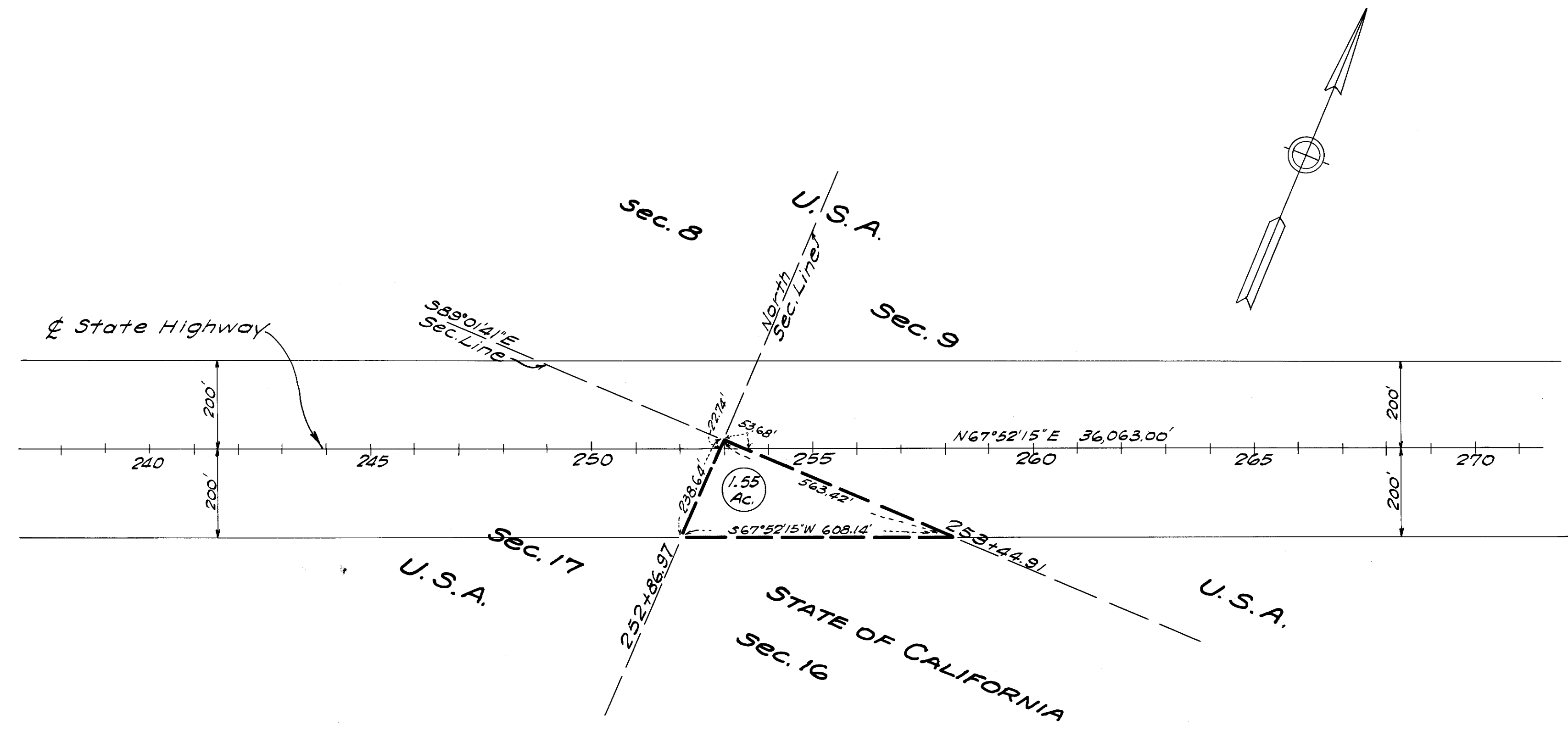


T. 3 N., R. 28 E. M.D.B. & M.

DIST.	COUNTY	ROUTE	SECTION	SHEET NO.	TOTAL SHEETS
IX	MNO	40	H		

Approved *M. Harris.*  
C.E. License 4901  
DISTRICT ENGINEER  
DIST. IX

APPROVED  
*Raymond S. Pisanzi*  
Assistant Chief Right of Way Agent



Scale 1"=200'

STATE OF CALIFORNIA  
DEPARTMENT OF FINANCE  
DIVISION OF STATE LANDS

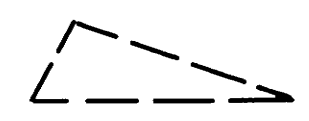
PURSUANT TO THE PROVISIONS OF SECTION 6210.3 (first) OF THE PUBLIC RESOURCES CODE. THIS MAP IS APPROVED AS TO THE LANDS AND RIGHT OF WAY SHOWN THERE ON AND THE SAME ARE RESERVED FOR STATE HIGHWAY PURPOSES

STATE LANDS COMMISSION

Date January 7, 1955 by Rufus W. Starnes  
EXECUTIVE OFFICER

LEGEND

Portion requested through  
vacant state school lands



STATE OF CALIFORNIA  
DEPARTMENT OF PUBLIC WORKS  
DIVISION OF HIGHWAYS

MAP SHOWING VACANT SCHOOL LANDS OF THE STATE OF CALIFORNIA IN MONO COUNTY, NEEDED AS A RIGHT OF WAY FOR AND FOR THE PROTECTION OF STATE HIGHWAY ROAD IX-MNO-40-H

*James R. Smith*  
Mono Co. Recorder