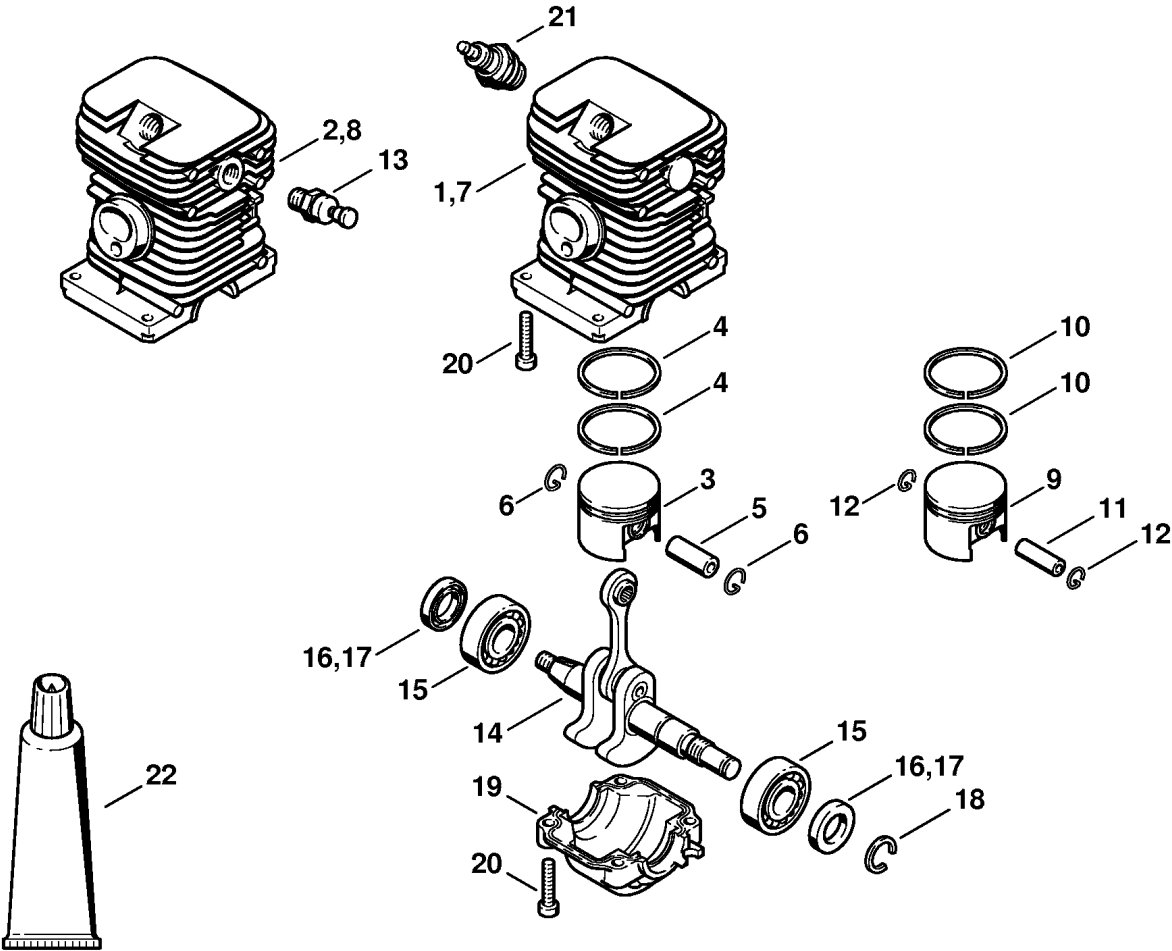


143ET031 SC

Reference	Item number	Qty	Description
1	1130 020 3002	1	Engine housing (1) □ 4 - 8, 12 - 15
2	1130 020 3011	1	Engine housing (2) □ 4 - 8, 11 - 15
4	1120 162 5200	1	Pin
5	1123 162 5200	1	Pin
6	1123 162 5205	2	Pin
7	1123 664 2400	2	Collar screw (1)
7	1123 664 2400	1	Collar screw (2)
8	1121 122 6600	2	Collar screw
9	1123 791 2800	2	Annular buffer
10	1123 791 7300	2	Plug
11	1123 664 2402	1	Collar screw (2)
12	1130 084 8303	1	Reflector foil (2) Cat.
13	1130 145 3400	2	Heat shield (2) Cat.
14	9104 003 8600	2	Self-tapping screw P3x10 (2) Cat.
15	1123 640 3200	1	Oil pump 0.55
16	1130 350 4400	1	Oil tank □ 17 - 19, 21
17	0000 359 1241	1	Sealing ring
18	1130 647 9400	1	Hose
19	1123 640 3800	1	Pickup body
20	1130 350 0410	1	Fuel tank □ 21, 22
21	0747 313 6810	2	Valve
22	1130 358 7700	1	Hose
23	0000 350 3500	1	Pickup body
24	1130 350 0500	2	Filler cap □ 25 - 27
25	0000 359 1240	2	Sealing ring
26	0000 350 0905	2	Rope
27	0000 353 0605	2	Hook
28	1130 791 5900	1	Stop buffer

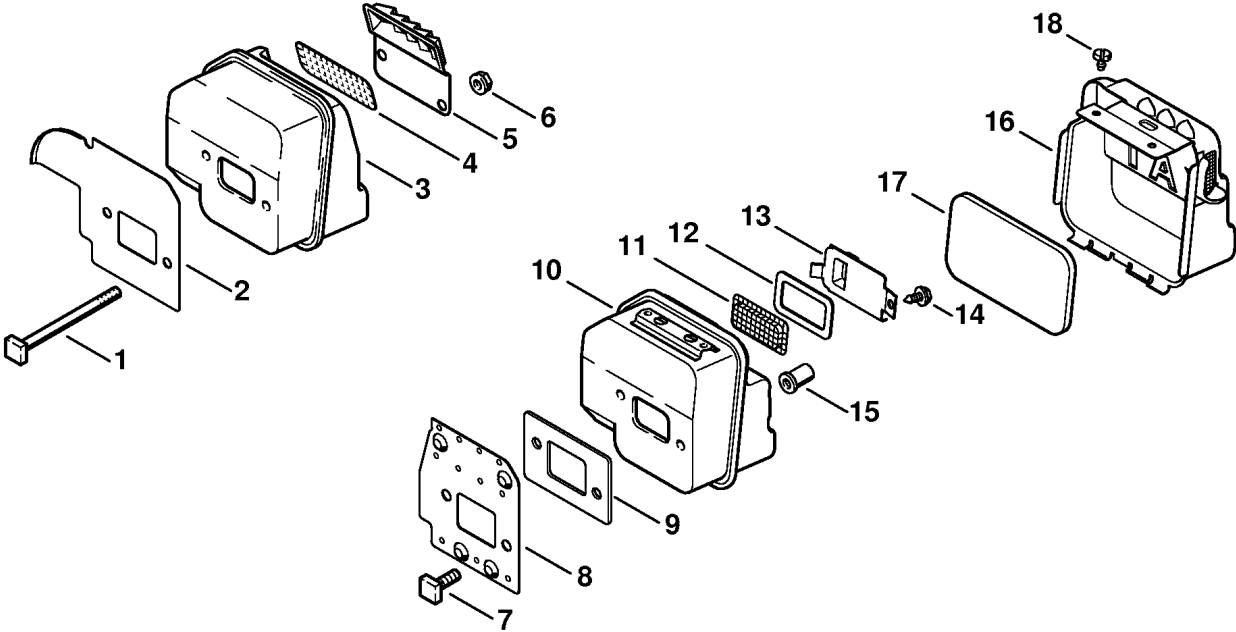
(1) 018, (2) 018 C



140ET010 SC

Reference	Item number	Qty	Description
1	1130 020 1205	1	Cylinder with piston Ø 38 mm (1) □ 3 - 6
2	1130 020 1206	1	Cylinder with piston Ø 38 mm (2) □ 3 - 6
3	1130 030 2004	1	Piston Ø 38 mm □ 4 - 6
4	1130 034 3002	2	Piston ring Ø 38x1.2 mm
5	1132 034 1501	1	Piston pin 10x6.5x25
6	9463 650 1000	2	Snap ring 10
7	* 1130 020 1203	1	Cylinder with piston Ø 38 mm (1) → 2 46 534 710 (06.2000) □ 9 - 12
8	* 1130 020 1201	1	Cylinder with piston Ø 38 mm (2) → 2 46 534 710 (06.2000) □ 9 - 12
9	* 1130 030 2003	1	Piston Ø 38 mm → 2 46 534 710 (06.2000) □ 10 - 12
10	* 1130 034 3002	2	Piston ring Ø 38x1.2 mm → 2 46 534 710 (06.2000)
11	* 1130 034 1500	1	Piston pin 8x4x25 → 2 46 534 710 (06.2000)
12	* 9463 650 0807	2	Snap ring 8x0.7 → 2 46 534 710 (06.2000)
13	1123 020 9400	1	Decompression valve (2)
14	1132 030 0402	1	Crankshaft (25.2005)
15	9503 003 0311	2	Grooved ball bearing 6002
16	9638 003 1581	2	Oil seal 15x25x5 (24.1996)
17	9639 003 1585	2	Oil seal 15x25x5 (24.1996)
18	9468 621 1520	1	Circlip 15x1
19	1130 021 2505	1	Engine pan
20	9075 478 4159	8	Pan head self-tapping screw IS-D5x24
21	1110 400 7005	1	Spark plug Bosch WSR 6 F
22	0783 830 2000	1	Tube of sealant Dirko HT red

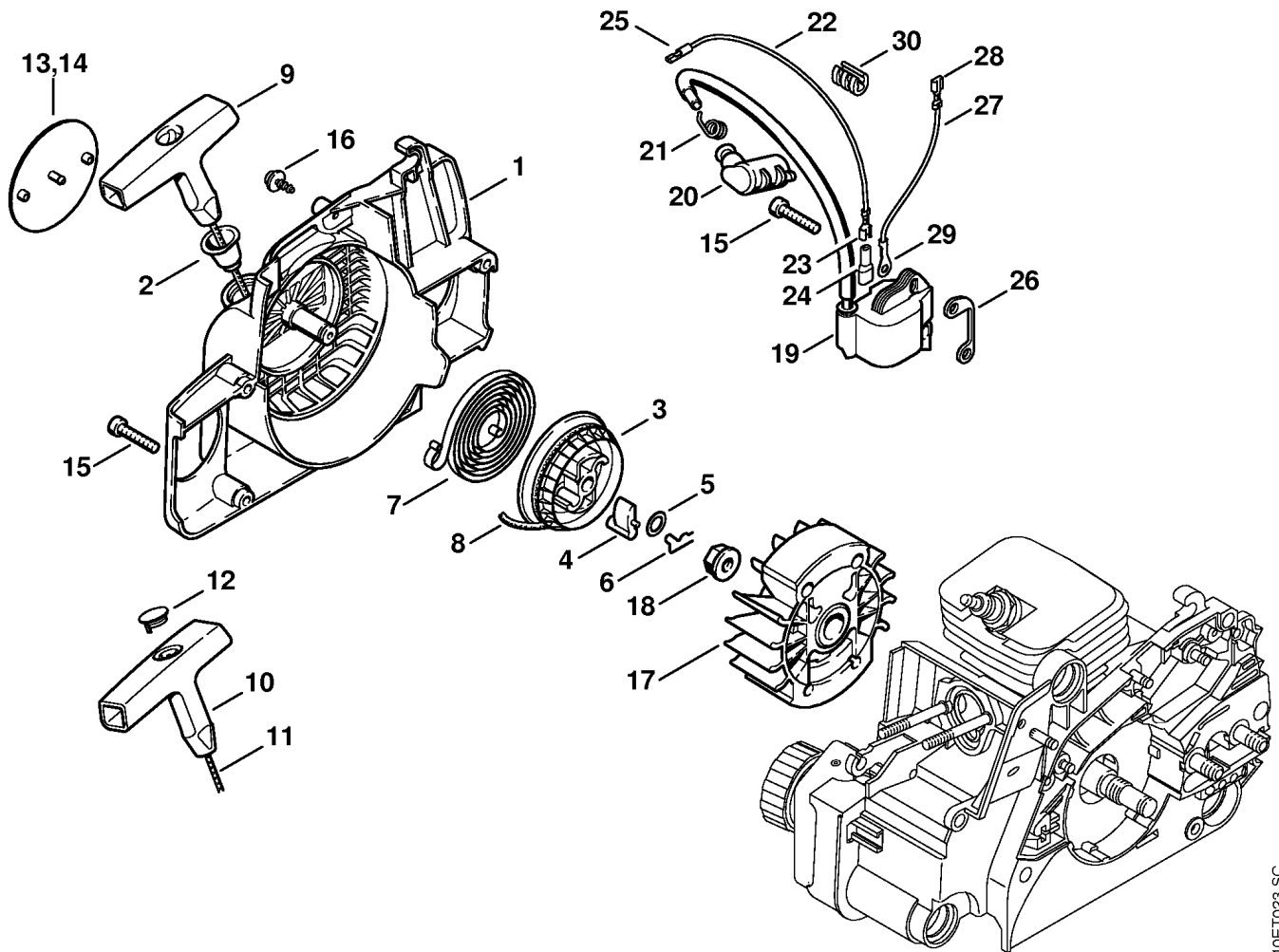
(1) 018, (2) 018 C



140ET011 SC

Reference	Item number	Qty	Description
1	1123 148 1201	2	Screw M5x65
2	1130 141 3200	1	Cooling plate
3	1130 140 0600	1	Muffler
4	1130 141 9000	1	Screen USA, AUS, CDN
5	1130 145 2900	1	Muffler cover
6	9216 261 0700	2	Hexagon nut M5
7	0000 148 1200	2	Screw M5x15 (2) Cat.
8	1130 141 3201	1	Cooling plate (2) Cat.
9	1130 149 0601	1	Muffler gasket (2) Cat.
10	1130 140 0604	1	Muffler (2) Cat. □ 11 - 14, 16, 17
11	1130 141 9001	1	Screen (2) Cat.
12	1130 149 0600	1	Muffler gasket (2) Cat.
13	1130 146 7400	1	Deflecting plate (2) Cat.
14	9099 021 0805	1	Self-tapping screw 4.2x6.5 (2) Cat.
15	0000 148 2000	2	Nut (2) Cat.
16	1130 140 0500	1	Protecting shell (2) Cat. □ 17
17	1130 146 9000	1	Insulating pad (2) Cat.
18	9099 021 0805	2	Self-tapping screw 4.2x6.5 (2) Cat.

(1) 018, (2) 018 C

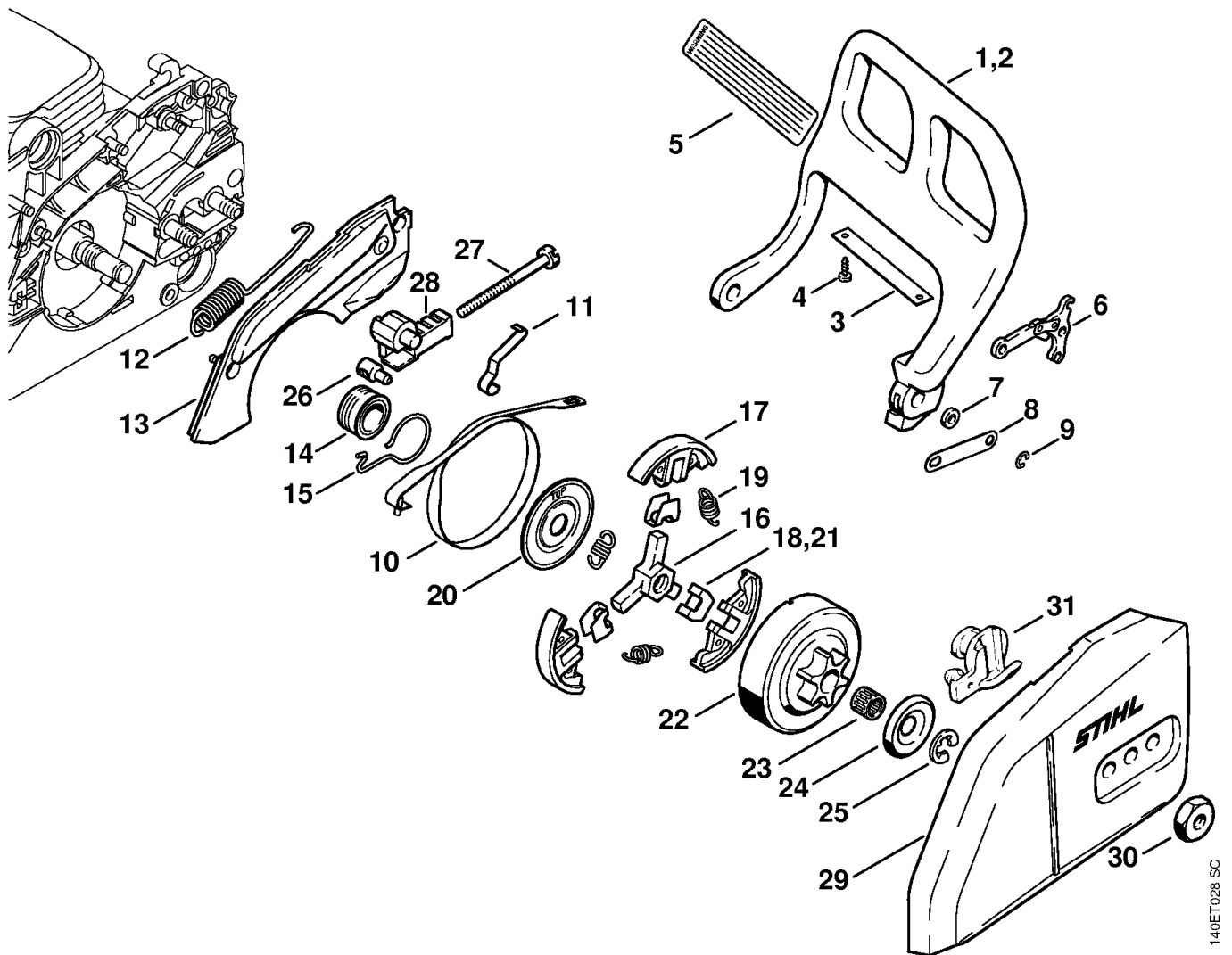


140ET023 SC

Reference	Item number	Qty	Description
	1130 080 2100	1	Fan housing with rewind starter (1) □ 1 - 9, 13
	1130 080 2105	1	Fan housing with rewind starter (2) □ 1 - 7, 10 - 12, 14
1	1130 080 1800	1	Fan housing □ 2, 13, 14
2	1110 084 9102	1	Bushing
3	1123 195 0400	1	Rope rotor
4	1125 195 7200	1	Pawl
5	0000 958 0923	1	Washer
6	1118 195 3500	1	Spring
7	1129 190 0601	1	Rewind spring
8	0000 195 8200	1	Starter rope Ø 3x800 mm (1)
9	1121 195 3400	1	Starter grip (1)
10	0000 190 3402	1	Starter grip ElastoStart Ø 3 mm (2) □ 11, 12
11	0000 195 8200	1	Starter rope Ø 3x800 mm (2)
12	0000 195 7001	1	Cap (2)
13	1130 967 1501	1	Model plate 018
14	1130 967 1502	1	Model plate 018 C
15	9075 478 4155	5	Pan head self-tapping screw IS-D5x24
16	9104 003 8733	1	Self-tapping screw P4x16
17	1130 400 1201	1	Flywheel (25.2005)
18	0000 955 0802	1	Collar nut M8x1
19	1130 400 1302	1	Ignition module □ 20, 21
20	1128 405 1000	1	Spark plug boot
21	0000 998 0604	1	Torsion spring
22	1130 440 1101	1	Short circuit wire □ 23 - 25
23		1	Terminal socket 4.8-1 (D)
24	0751 030 8467	1	Grommet
25	0751 030 8490	1	Terminal socket 3.5
26	1130 405 8000	2	Insulator
27	1130 440 2201	1	Ground wire 125 mm / 4 15/16" □ 28, 29
28	0751 030 8953	1	Terminal socket 4.8-1
29	0751 030 8969	1	Terminal socket A5-1.5
30	1130 448 1201	1	Lead retainer

(1) 018, (2) 018 C

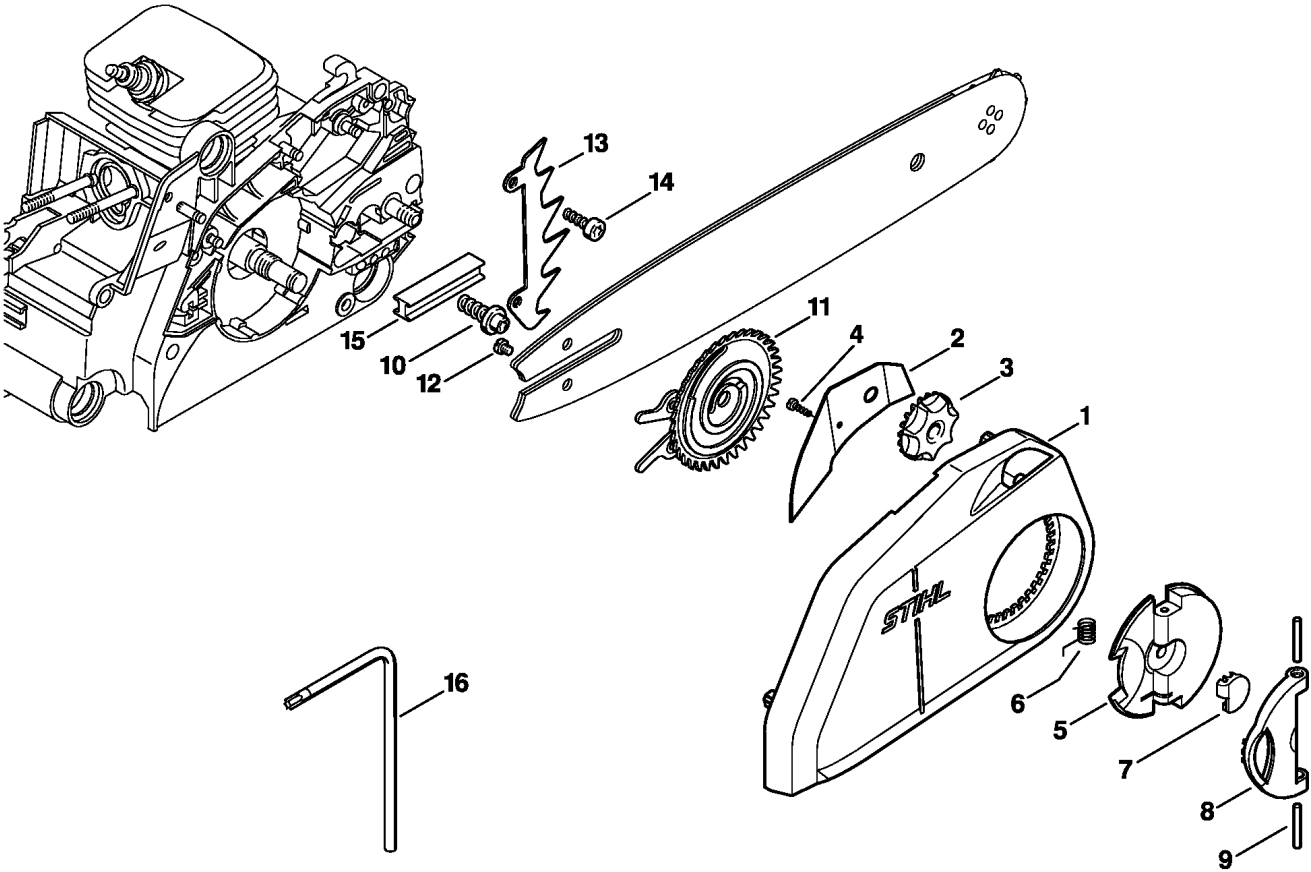




140ET028 SC

Reference	Item number	Qty	Description
1	1130 792 9100	1	Hand guard
2	1130 790 9100	1	Hand guard (2) Cat. □ 3, 4
3	1130 145 0600	1	Heat shield (2) Cat.
4	9104 003 8600	2	Self-tapping screw P3x10 (2) Cat.
5	0000 967 3630	1	Instruction label USA
6	1128 160 5000	1	Lever
7	0000 958 0521	1	Washer
8	1123 162 5800	1	Strap
9	9460 624 0400	1	E-clip 4
10	1123 160 5400	1	Brake band
11	1123 162 7800	1	Flat spring
12	1123 162 7900	1	Tension spring
13	1130 021 1100	1	Cover
14	1123 640 7105	1	Worm □ 15
15	1123 647 2400	1	Spring
16	1123 160 2050	1	Clutch □ 17 - 20
17	1129 162 0800	3	Clutch shoe
18	1127 162 3000	3	Retainer
19	0000 997 5515	3	Tension spring
20	1121 162 1001	1	Cover washer
21	* 1121 162 3000	3	Retainer (35.2000)
22	1123 640 2003	1	Chain sprocket 3/8" Picco 6T
23	9512 933 2260	1	Needle cage 10x13x10
24	0000 958 1022	1	Washer Ø 27 mm
25	9460 624 0801	1	E-clip 8x1.3
26	1120 664 1500	1	Tensioning nut
27	1123 664 1605	1	Adjusting screw
28	1123 664 2205	1	Cover
29	1123 640 1705	1	Chain sprocket cover
30	0000 955 0801	2	Hexagon nut M8
31	1123 656 7700	1	Chain catcher (B)

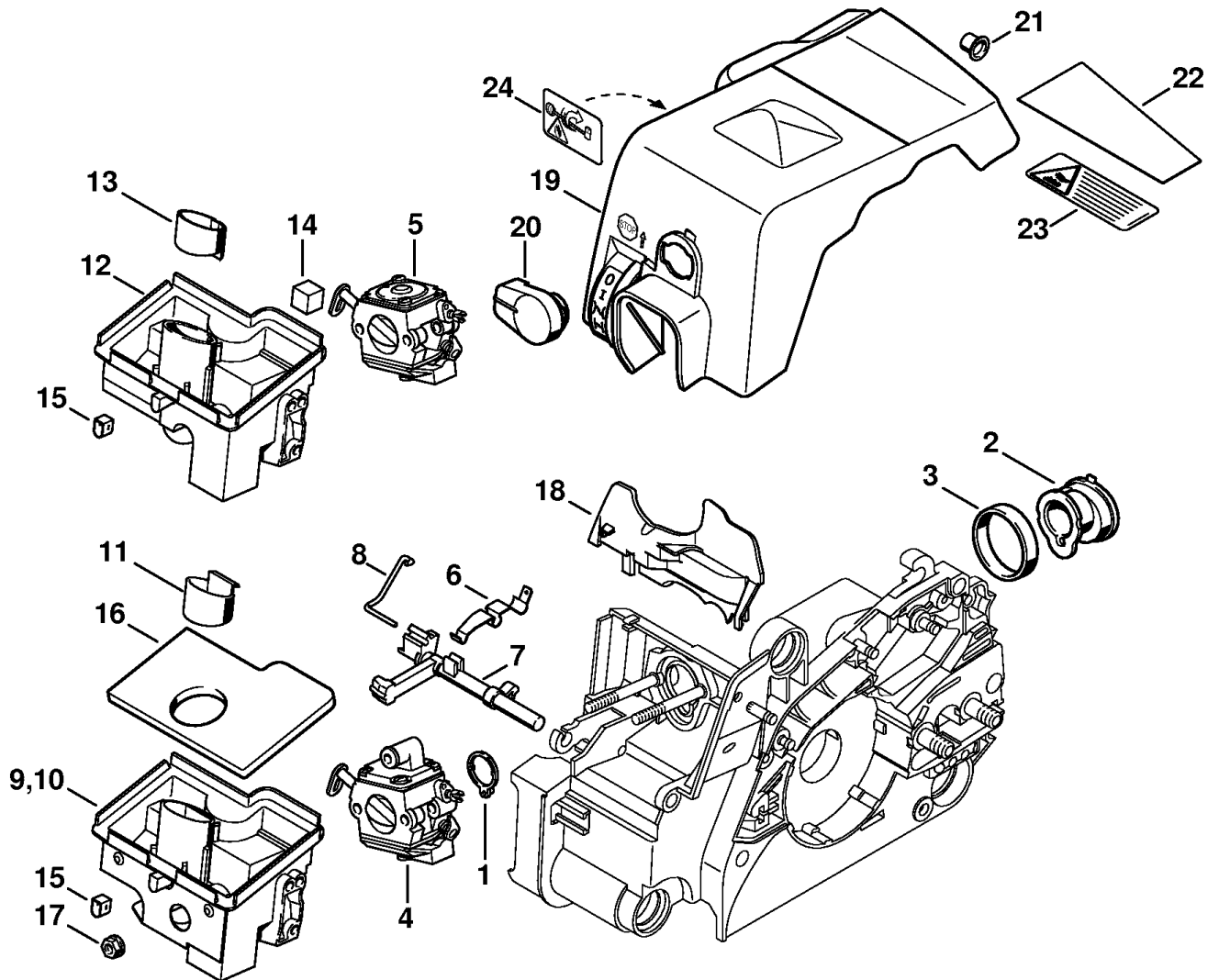
(1) 018, (2) 018 C



143ET007 SC

Reference	Item number	Qty	Description
	1123 007 1008	1	Quick tensioner parts (B) □ 1 - 16
1	1123 640 1700	1	Chain sprocket cover □ 2 - 4
2	1123 648 3800	1	Cover plate
3	1123 648 2202	1	Adjusting wheel
4	9104 003 8600	1	Self-tapping screw P3x10
5	1121 660 1000	1	Wing nut □ 6 - 9
6		1	Torsion spring (D)
7		1	Cap (D)
8		1	Handle (D)
9		2	Cylindrical pin 3m6x26 (D)
10	1123 664 2402	1	Collar screw
11	1123 660 3001	1	Tensioning gear □ 12
12	9041 319 0600	1	Pan head screw M4x5
13	1123 664 0501	1	Bumper spike
14	9075 478 4115	2	Pan head self-tapping screw IS-D5x16
15	1123 021 2800	1	Insert
16	0812 370 1000	1	Screwdriver T27x120x70

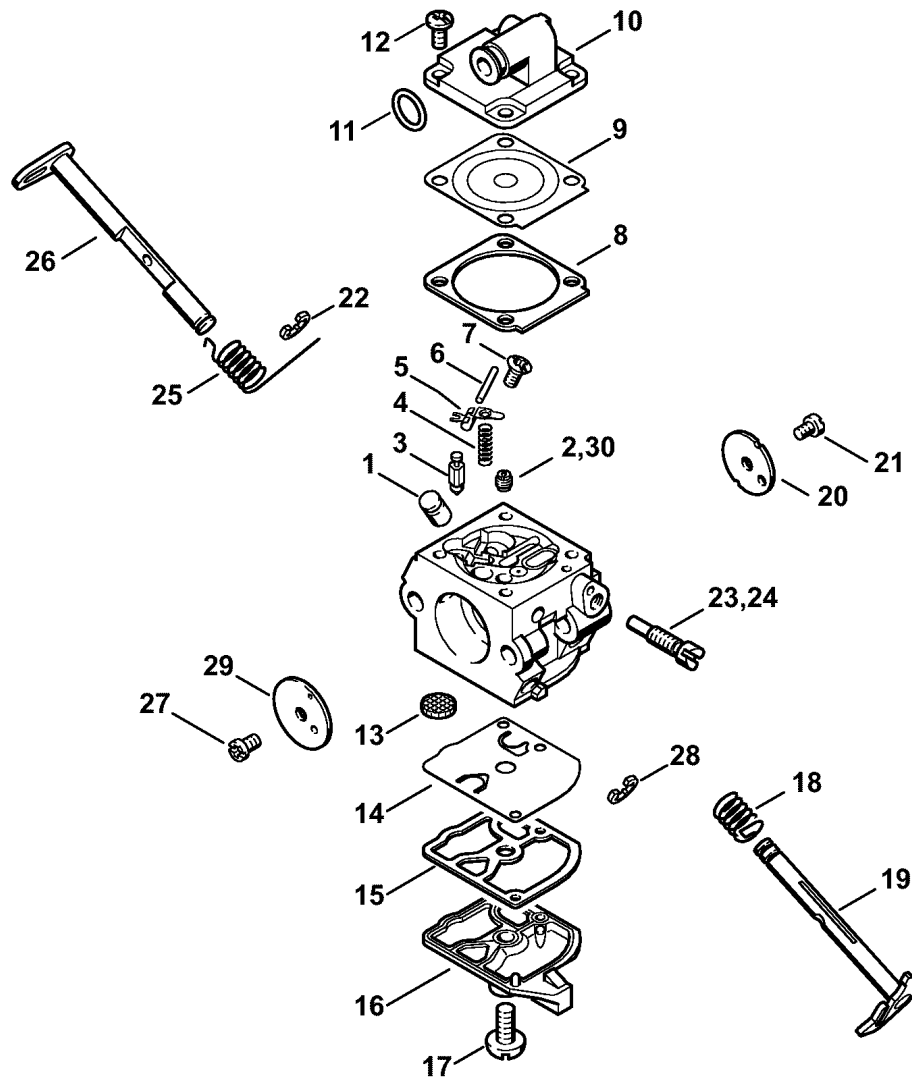
(1) 018, (2) 018 C



140ET022 SC

Reference	Item number	Qty	Description
1	1130 141 1800	1	Sleeve
2	1130 141 2200	1	Manifold
3	1130 022 2000	1	Ring
4	1130 120 0603	1	Carburetor C1Q-S57B
5	* 1130 120 0601	1	Carburetor C1Q-S43B
6	1122 442 1603	1	Contact spring
7	1130 182 0900	1	Switch shaft
8	1130 185 2000	1	Choke rod
9	1130 140 2803	1	Filter housing □ 11, 15, 16
10	1130 140 2804	1	Filter housing (2) Cat. □ 11, 15, 16
11	1130 141 1101	1	Insert
12	* 1130 140 2800	1	Filter housing □ 14, 15
13	* 1130 141 1100	1	Insert
14	* 1130 141 4300	1	Packing
15	1130 124 7100	1	Sleeve
16	1130 124 0800	1	Filter plate
17	9216 261 0700	2	Hexagon nut M5
18	1130 124 3200	1	Baffle plate
19	1130 140 4701	1	Shroud □ 20, 21
20	1130 141 2300	1	Twist lock
21	1130 141 1801	1	Sleeve
22	1130 084 8300	1	Reflector foil (2) Cat.
23	0000 967 3748	1	Instruction label (2) Cat.
24	0000 967 3692	1	Warning pictogram Filler cap USA, CDN

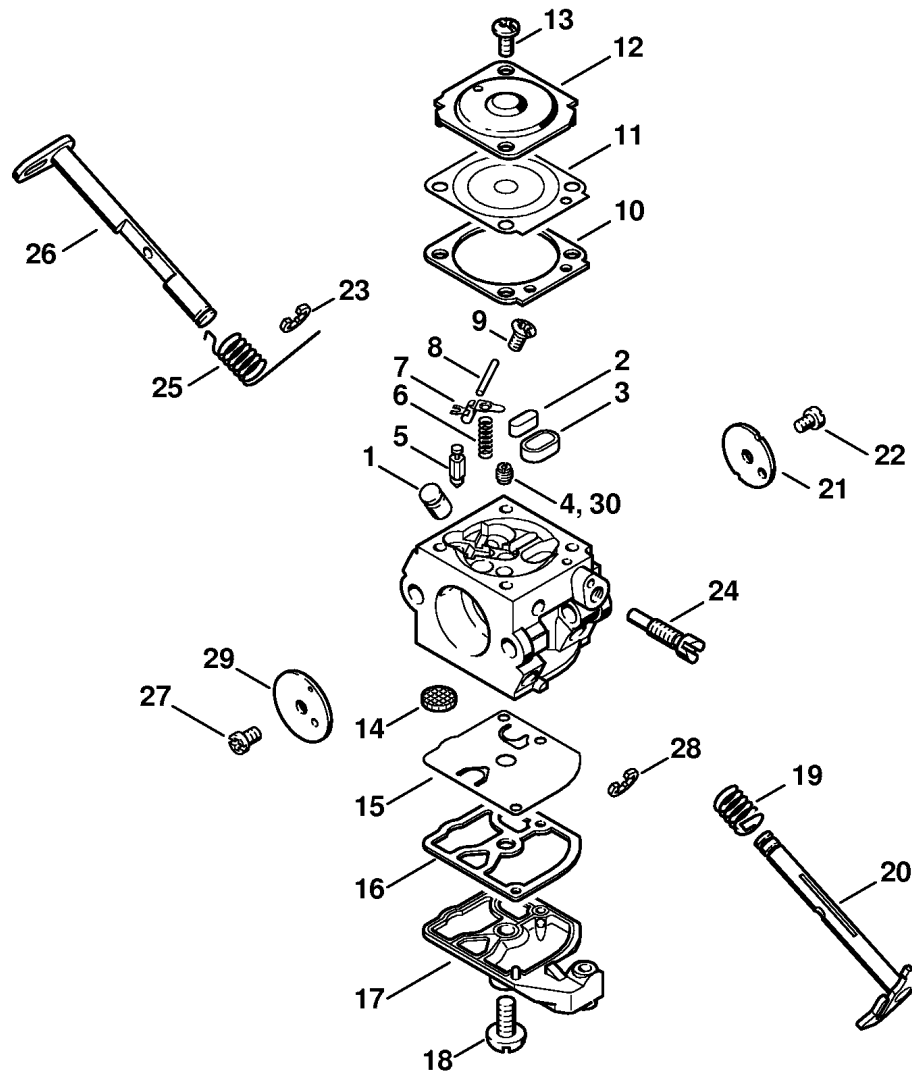
(1) 018, (2) 018 C



Reference	Item number	Qty	Description
	1130 120 0603	1	Carburetor C1Q-S57B □ 1 - 23, 25 - 29
	*	1	Carburetor C1Q-S57A (C) (31.2009) □ 1 - 22, 24 - 29
1	1130 121 5401	1	Valve jet
2	1130 121 5604	1	Fixed jet 0.45
3	4116 121 5100	1	Inlet needle
4	1130 122 3001	1	Spring
5	1125 121 5000	1	Inlet control lever
6	1120 121 9200	1	Spindle
7	1120 122 6600	1	Collar screw
8	1130 129 0901	1	Gasket
9	1130 121 4700	1	Metering diaphragm
10	1130 121 0800	1	End cover
11	9646 945 0490	1	O-ring 7x1.5
12	1120 122 6601	4	Collar screw
13	1123 121 7800	1	Strainer
14	1130 121 4800	1	Pump diaphragm
15	1130 129 0900	1	Gasket
16	1130 121 0801	1	End cover
17	1120 122 7800	1	Oval head screw
18	1123 122 3000	1	Spring
19	1130 120 7101	1	Throttle shaft with lever
20	1130 121 3302	1	Throttle shutter
21	1120 122 7400	1	Round head screw
22	1125 122 9001	1	E-clip
23	1130 122 6301	1	Idle speed adjustment screw
24	* 1130 122 6300	1	Idle speed adjustment screw (31.2009)
25	1123 122 3203	1	Torsion spring
26	1123 120 7200	1	Choke shaft with lever
27	1125 122 7403	1	Round head screw
28	1125 122 9002	1	E-clip
29	1132 121 2901	1	Choke shutter
30	4137 121 5601	1	Fixed jet 0.42 (B) High altitude
	1130 007 1061	1	Set of carburetor parts □ 8, 9, 14, 15

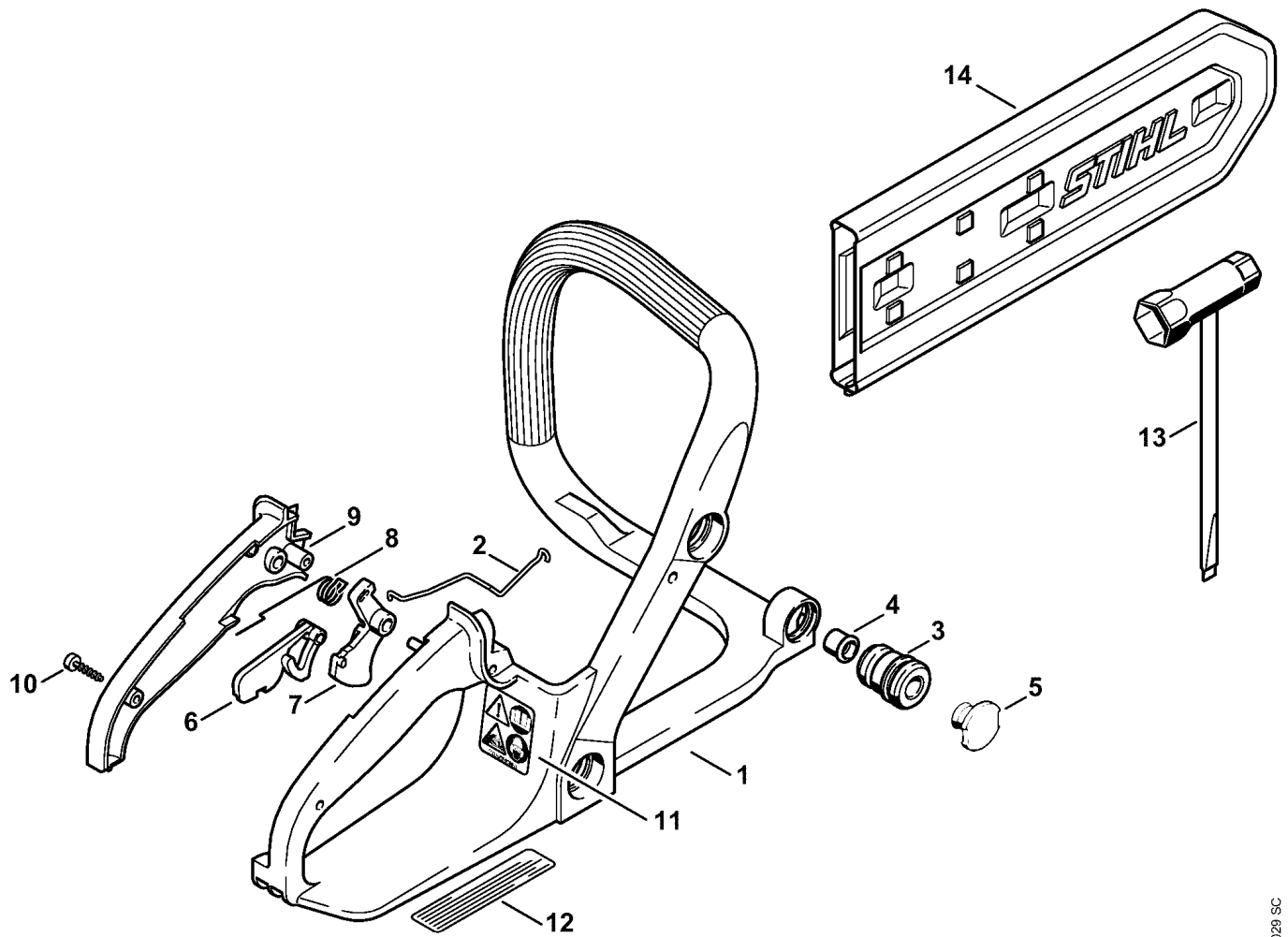
(1) 018, (2) 018 C





Reference	Item number	Qty	Description
	* 1130 120 0601	1	Carburetor C1Q-S43B (49.2000) □ 1 - 29
1	* 1130 121 5401	1	Valve jet (49.2000)
2	* 4226 121 0700	1	Cup plug (49.2000)
3	* 4129 121 0700	1	Cup plug (49.2000)
4	* 1130 121 5604	1	Fixed jet 0.45 (49.2000)
5	* 4116 121 5100	1	Inlet needle (49.2000)
6	* 1130 122 3001	1	Spring (49.2000)
7	* 1125 121 5000	1	Inlet control lever (49.2000)
8	* 1120 121 9200	1	Spindle (49.2000)
9	* 1120 122 6600	1	Collar screw (49.2000)
10	* 1130 129 0901	1	Gasket (49.2000)
11	* 1130 121 4700	1	Metering diaphragm (49.2000)
12	* 1129 121 0800	1	End cover (49.2000)
13	* 4132 122 6600	2	Collar screw (49.2000)
14	* 1123 121 7800	1	Strainer (49.2000)
15	* 1130 121 4800	1	Pump diaphragm (49.2000)
16	* 1130 129 0900	1	Gasket (49.2000)
17	* 4128 121 0800	1	End cover (49.2000)
18	* 1120 122 7800	1	Oval head screw (49.2000)
19	* 1123 122 3000	1	Spring (49.2000)
20	* 1120 120 7101	1	Throttle shaft with lever (49.2000)
21	* 1130 121 3302	1	Throttle shutter (49.2000)
22	* 1120 122 7400	1	Round head screw (49.2000)
23	* 1125 122 9001	1	E-clip (49.2000)
24	* 1130 122 6300	1	Idle speed adjustment screw (49.2000)
25	* 1123 122 3200	1	Torsion spring (49.2000)
26	* 1123 120 7200	1	Choke shaft with lever (49.2000)
27	* 1125 122 7403	1	Round head screw (49.2000)
28	* 1125 122 9002	1	E-clip (49.2000)
29	* 1123 121 2901	1	Choke shutter (49.2000)
30	* 4137 121 5601	1	Fixed jet 0.42 High altitude (49.2000)
	* 1130 007 1061	1	Set of carburetor parts (49.2000) □ 10, 11, 15, 16

(1) 018, (2) 018 C



140ET029 SC

---

Reference	Item number	Qty	Description
1	1130 791 4901	1	Handle frame
2	1130 182 1502	1	Throttle rod
3	1123 791 2800	1	Annular buffer
4	1123 791 7305	1	Plug
5	1123 791 7300	1	Plug
6	1130 182 0800	1	Trigger interlock
7	1130 182 1000	1	Throttle trigger
8	1117 182 4500	1	Torsion spring
9	1130 791 0601	1	Handle molding
10	9074 478 3075	2	Pan head self-tapping screw IS-P4x19
11	0000 967 3632	1	Warning pictogram MS
12	0000 967 3500	1	Instruction label USA
13	1129 890 3401	1	Combination wrench
14	0000 792 9128	1	Chain scabbard

(1) 018, (2) 018 C