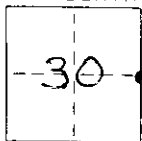


CORNER RECORD

COUNTY OF MONO T. 1N R. 26E SEC. 30 MERIDIAN CALIFORNIA
 CORNER TYPE: GOV'T. CORNER ☒ MEANDER ☐ RANCHO ☐ CONTROL ☐ OTHER ☐
 CORNER IDENTIFICATION - DATE OF VISIT AUG 19 83



CORNER - LEFT AS FOUND ☐ FOUND AND TAGGED ☐ REESTABLISHED OBLITERATED CORNER ☐ REBUILT ☒

PHYSICAL DESCRIPTION OF CORNER FOUND: EVIDENCE AND METHOD USED TO IDENTIFY OR REESTABLISH FOUND 2" PIPE & NATIONAL FOREST SIGN LYING ON GROUND. FOUND BEARING TREES PER ORIGINAL NOTES

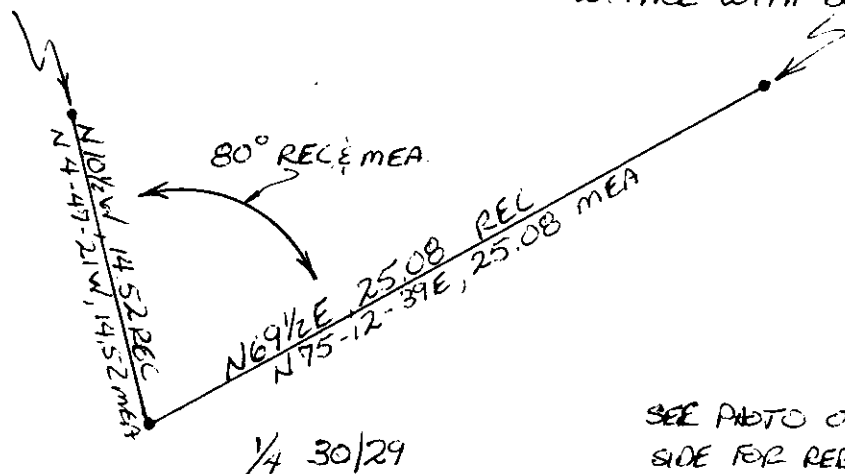
PHYSICAL DESCRIPTION OF MONUMENTS REBUILT OR PERPETUATED SET 2" PIPE WITH CONCRETE PLUG, TAG # RCE 15557, UP 30", RECORD DISTANCES FROM BEARING TREES MEASURED FROM CENTER CROWN ROOT, IN MOUND OF STONE 2' DIA, WITH CONCRETE PLACED ON M/S. GUARD POST 2' W 1/4

CALIFORNIA COORDINATE SYSTEM ORDER: FIRST ☐ SECOND ☐ THIRD ☐
 STATIONS USED: NGS (USC & GS) ☐ STATE ☐ COUNTY ☐ OTHER ☐ STATION _____ STATION _____
 ZONE _____ ELEVATION _____ NORTHINGS (Y) _____ EASTINGS (X) _____

SKETCH: (Include reference tie or witness points, remarks and topo of area)

"BT" 18" YELLOW PINE PER ORIGINAL NOTES. FD 44" YELLOW PINE WITH NO SIGN OF BLAZE.

"BT" 10" YELLOW PINE PER ORIGINAL NOTES FD 26" YELLOW PINE BLAZED ON W. FACE WITH BLAZE UP 5 1/2'



SEE PHOTO ON REVERSE
SIDE FOR REBUILT MONUMENT

SURVEYOR'S CERTIFICATE

THIS CORNER RECORD WAS PREPARED BY ME OR UNDER MY DIRECTION IN CONFORMANCE WITH THE LAND SURVEYORS ACT ON Sept 22 19 83
 SIGNED: Robert A. Nelson
 L.S. or R.C.E. No.: 15557

SEAL

COUNTY SURVEYOR'S CERTIFICATE

THIS CORNER RECORD WAS RECEIVED 4-2 19 84
 AND EXAMINED AND FILED 4-20 19 84
 BY: R. BOARDMAN
 TITLE: Dep. County Surveyor
 DOCUMENT No. 11126-30-5
 STATEMENT ON BACK OF SHEET

YES ☐ NO ☒