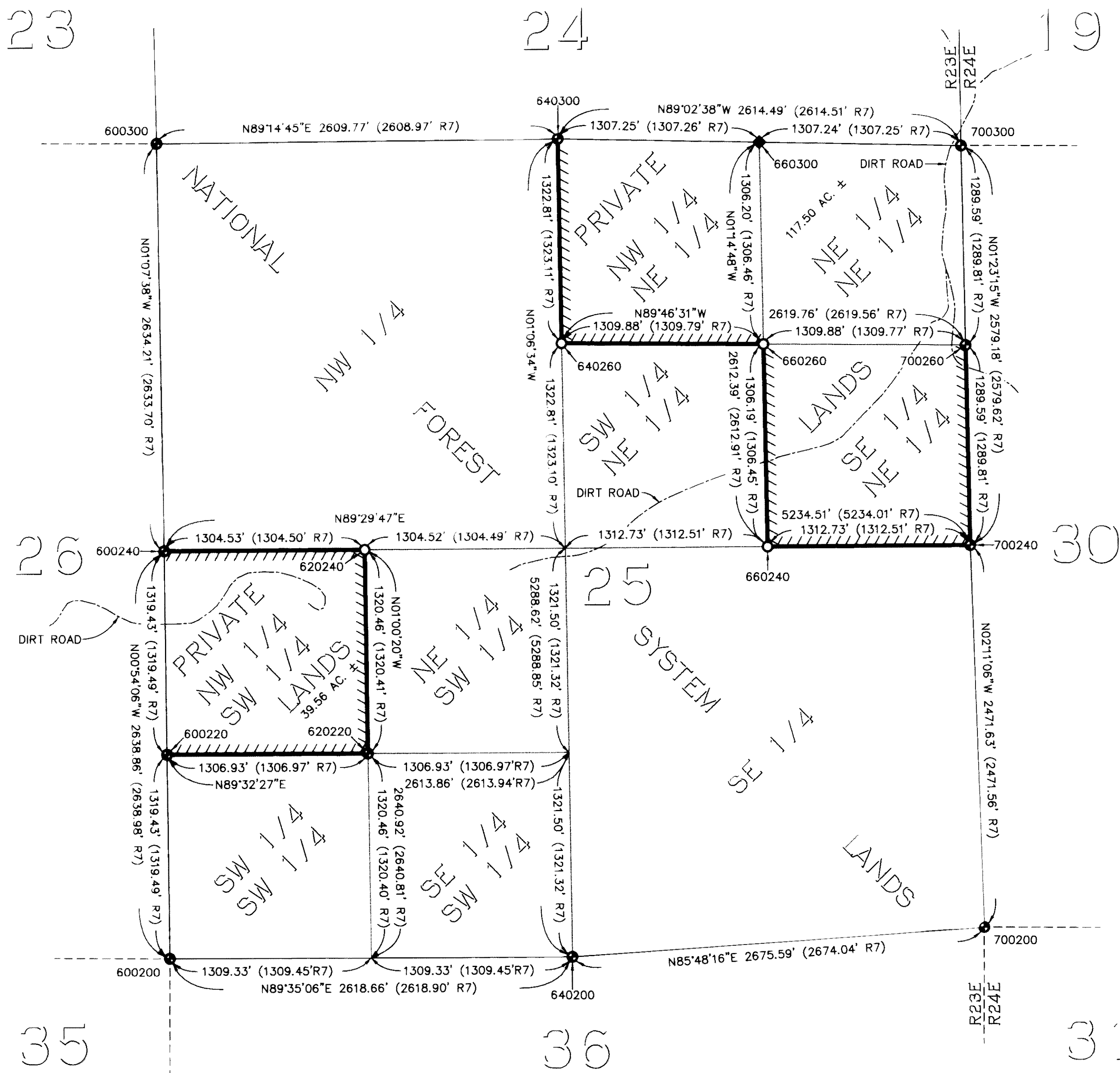


RECORD OF SURVEY No. 32-85

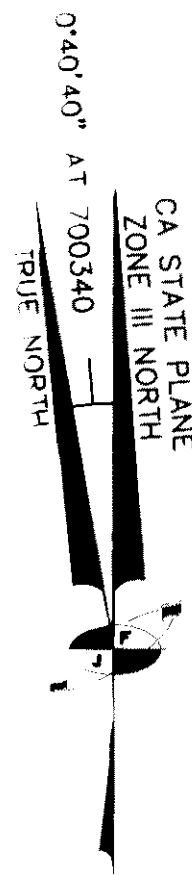
SHEET 5 OF 8 SHEETS

IN THE UNINCORPORATED TERRITORY OF THE COUNTY OF MONO,
STATE OF CALIFORNIA, BEING SECTIONS 13, 24, AND 25,
TOWNSHIP 6 NORTH, RANGE 23 EAST, MOUNT DIABLO MERIDIAN



LEGEND:

- FOUND NOTHING, SET USFS ALUMINUM MONUMENT: A 3/4" DIAMETER CAP ON A 2 1/2" DIAMETER POST, 30 INCHES LONG, UNLESS OTHERWISE NOTED
- FOUND CORNER AS DESCRIBED, REPLACED WITH USFS ALUMINUM MONUMENT: A 3/4" DIAMETER CAP ON A 2 1/2" DIAMETER POST, 30 INCHES LONG, UNLESS OTHERWISE NOTED
- FOUND GENERAL LAND OFFICE MONUMENT AS NOTED
- ◆ FOUND MONUMENT AS NOTED
- //// TOIYABE NATIONAL FOREST BOUNDARY POSTED AND MARKED THIS SURVEY
- ESTABLISHED SECTIONAL LINES
- UNSURVEYED LINE, OR BEARING AND DISTANCE TIE ONLY
- ROADS OR PATHS AS NOTED
- 700500 INDICATES CORNER NUMBER, SEE PAGES 6 THROUGH 8 FOR DESCRIPTIONS
- RCE REGISTERED CIVIL ENGINEER
- R1 ORIGINAL SURVEY PLAT AND NOTES, T6N, R23E, MDM, APPROVED BY THE U.S. SURVEYOR GENERALS OFFICE ON MARCH 12, 1877
- R2 GENERAL LAND OFFICE DEPENDENT RESURVEY OF THE SOUTH BOUNDARY OF T7N, R24E, A PORTION OF THE WEST BOUNDARY OF T6N, R25E, AND A PORTION OF THE EAST BOUNDARY OF T6N, R23E, AND THE RESURVEY AND SURVEY OF A PORTION OF THE SUBDIVISIONS OF T6N, R24E, MDM, APPROVED BY THE OFFICE OF THE U.S. SUPERVISOR OF SURVEYS, GENERAL LAND OFFICE, ON JULY 13, 1926
- R3 MAP BOOK 6, PAGE 11, FILED DECEMBER 4, 1968, AS INSTRUMENT NO. 2000
- R4 MAP BOOK 6, PAGE 37, FILED APRIL 14, 1969, AS INSTRUMENT NO. 3093
- R5 MAP BOOK 6, PAGE 76, FILED JANUARY 12, 1970, AS INSTRUMENT NO. 1577
- R6 PARCEL MAP NO. 32-29, PARCEL MAP BOOK 3, PAGE 26, FILED AUGUST 29, 1984, AS INSTRUMENT NO. 1790
- R7 RECORD OF SURVEY NO. 32-23, RECORD OF SURVEY MAPS BOOK 1, PAGE 98, FILED JUNE 12, 1984, AS INSTRUMENT NO. 8933
- R8 RECORD OF SURVEY NO. 32-32, RECORD OF SURVEY MAPS BOOK 2, PAGE 26, FILED MAY 19, 1987, AS INSTRUMENT NO. 8143
- R9 PARCEL MAP NO. 32-55, PARCEL MAP BOOK 4, PAGE 122, FILED SEPTEMBER 22, 2000, AS INSTRUMENT NO. 2000005538



GRAPHIC SCALE

